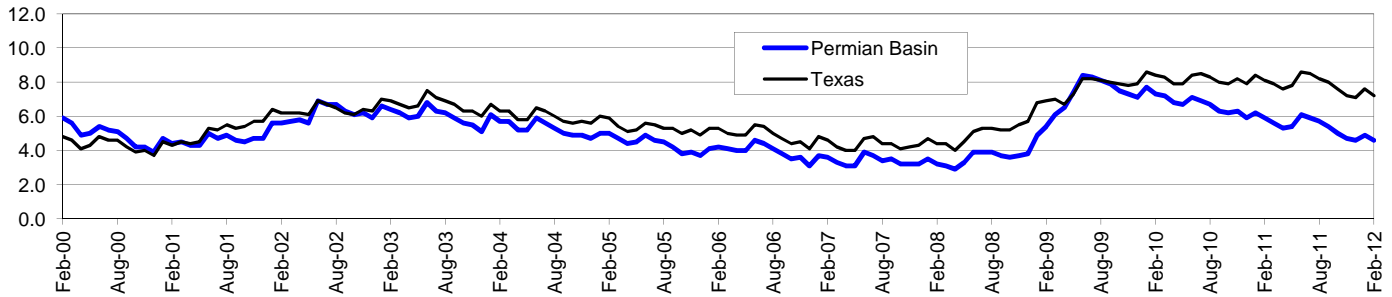


Permian Basin Workforce Development Area*

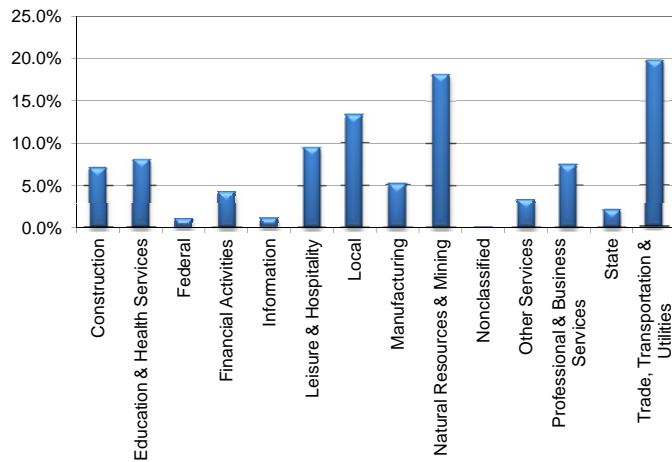
February 2012

Permian Basin WDA					Texas				
	CLF	Employed	Unemployed	Rate		CLF	Employed	Unemployed	Rate
Feb-12	230,533	219,911	10,622	4.6	Feb-12	12,464,812	11,570,544	894,268	7.2
Jan-12	230,131	218,747	11,384	4.9	Jan-12	12,461,937	11,515,306	946,631	7.6
Feb-11	222,365	209,273	13,092	5.9	Feb-11	12,343,147	11,338,366	1,004,781	8.1

Historical Unemployment Rates



Permian Basin WDA Industry Composition 3rd Quarter 2011



Total WDA Claims

Continued Claims for the Week of the 12th				
	Jan-12	Feb-11	Jan-00	OTY
Continued	883	949	1,143	-260

Texas Unemployment Insurance Claims

Continued Claims for the Week of the 12th				
	Feb-12	Jan-12	Feb-11	OTY
Continued	134,749	146,345	153,046	-18,297

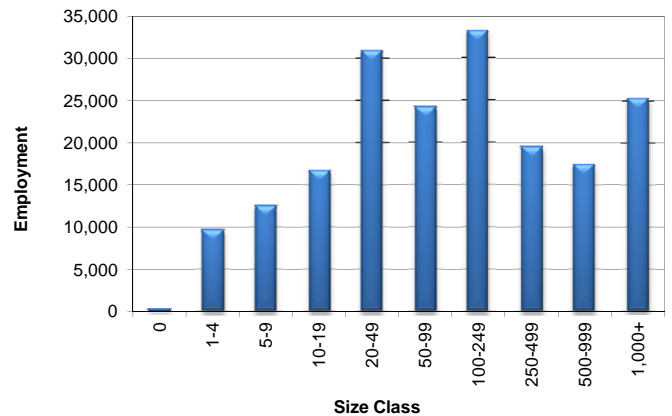
Permian Basin WDA Average Weekly Wage

	Permian Basin	Texas
3rd Quarter 2011	\$957.72	\$931.50
2nd Quarter 2011	\$905.74	\$899.57
3rd Quarter 2010	\$859.29	\$876.29
Quarter Change	\$51.98	\$31.93
OTY Change	\$98.43	\$55.21

NAICS Covered Employment Quarterly Data 3rd Quarter 2011

SUPER SECTOR	Employment	Change	
		Quarter	Year
Construction	13,421	331	1,938
Education & Health Services	15,220	-109	74
Federal	1,986	-15	-173
Financial Activities	7,915	200	369
Information	2,018	-15	3
Leisure & Hospitality	18,087	167	1,453
Local	25,121	-1,702	-576
Manufacturing	9,627	261	1,188
Natural Resources & Mining	34,445	2,010	5,519
Nonclassified	101	41	26
Other Services	6,185	151	421
Professional & Business Services	13,920	291	1,261
State	3,965	-221	-229
Trade, Transportation & Utilities	37,540	1,098	2,859
TOTAL	189,551	2,488	14,133

Size Class Employment Composition 3rd Quarter 2011



*Counties in WDA: Andrews, Borden, Crane, Dawson, Ector, Gaines, Glasscock, Howard, Loving, Martin, Midland, Pecos, Reeves, Terrell, Upton, Ward, & Winkler

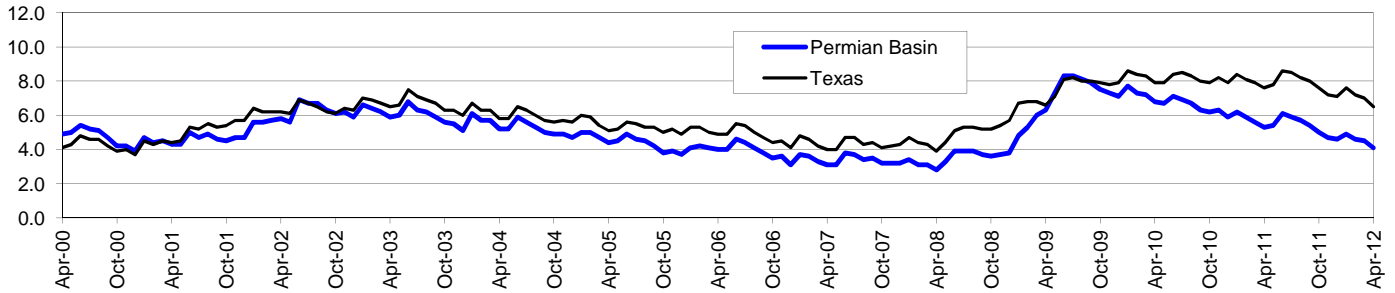
Area	Area Type	Latest Month				Month Ago				Year Ago			
		February				January				February			
		2012				2012				2011			
		Labor Force	Employment	Unemployment	Rate	Labor Force	Employment	Unemployment	Rate	Labor Force	Employment	Unemployment	Rate
Texas	State	12,464,812	11,570,544	894,268	7.2	12,461,937	11,515,306	946,631	7.6	12,343,147	11,338,366	1,004,781	8.1
Midland	MSA	83,828	80,606	3,222	3.8	83,966	80,505	3,461	4.1	81,572	77,761	3,811	4.7
Odessa	MSA	81,209	77,520	3,689	4.5	80,423	76,473	3,950	4.9	76,079	71,159	4,920	6.5
Permian Basin	WDA	230,533	219,911	10,622	4.6	230,131	218,747	11,384	4.9	222,365	209,273	13,092	5.9
Andrews	County	7,837	7,505	332	4.2	7,913	7,559	354	4.5	7,634	7,232	402	5.3
Borden	County	551	532	19	3.4	551	530	21	3.8	473	448	25	5.3
Crane	County	1,715	1,609	106	6.2	1,740	1,627	113	6.5	1,747	1,608	139	8.0
Dawson	County	5,497	5,088	409	7.4	5,578	5,156	422	7.6	5,533	5,095	438	7.9
Ector	County	81,209	77,520	3,689	4.5	80,423	76,473	3,950	4.9	76,079	71,159	4,920	6.5
Gaines	County	7,714	7,334	380	4.9	7,619	7,214	405	5.3	7,552	7,120	432	5.7
Glasscock	County	690	660	30	4.3	684	655	29	4.2	638	608	30	4.7
Howard	County	14,054	13,161	893	6.4	14,104	13,127	977	6.9	14,247	13,217	1,030	7.2
Loving	County	41	37	4	9.8	40	36	4	10.0	40	36	4	10.0
Martin	County	2,532	2,417	115	4.5	2,544	2,424	120	4.7	2,367	2,235	132	5.6
Midland	County	83,828	80,606	3,222	3.8	83,966	80,505	3,461	4.1	81,572	77,761	3,811	4.7
Pecos	County	8,959	8,526	433	4.8	8,996	8,551	445	4.9	8,903	8,405	498	5.6
Reeves	County	4,748	4,300	448	9.4	4,770	4,285	485	10.2	4,720	4,207	513	10.9
Terrell	County	404	375	29	7.2	404	374	30	7.4	396	360	36	9.1
Upton	County	1,938	1,867	71	3.7	1,905	1,821	84	4.4	1,876	1,789	87	4.6
Ward	County	5,252	4,983	269	5.1	5,276	4,982	294	5.6	5,092	4,738	354	7.0
Winkler	County	3,564	3,391	173	4.9	3,618	3,428	190	5.3	3,496	3,255	241	6.9
Big Spring	City	10,201	9,514	687	6.7	10,248	9,489	759	7.4	10,362	9,555	807	7.8
Midland	City	68,510	65,891	2,619	3.8	68,638	65,808	2,830	4.1	66,631	63,565	3,066	4.6
Odessa	City	59,382	56,734	2,648	4.5	58,819	55,979	2,840	4.8	55,639	52,124	3,515	6.3

Permian Basin Workforce Development Area*

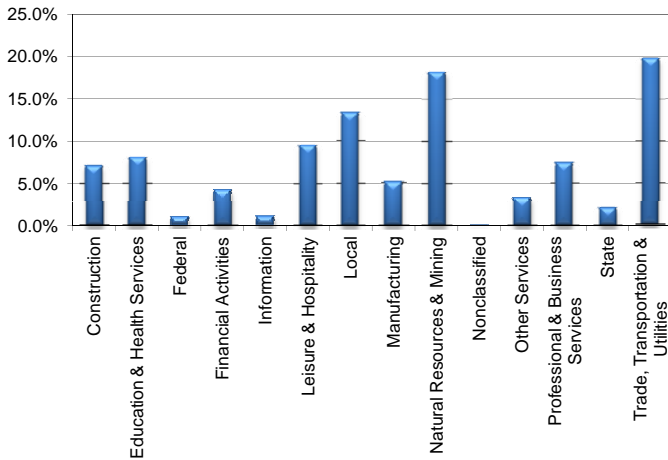
April 2012

Permian Basin WDA					Texas				
	CLF	Employed	Unemployed	Rate		CLF	Employed	Unemployed	Rate
Apr-12	234,399	224,703	9,696	4.1	Apr-12	12,547,852	11,733,325	814,527	6.5
Mar-12	231,527	221,204	10,323	4.5	Mar-12	12,531,173	11,655,250	875,923	7.0
Apr-11	225,942	213,869	12,073	5.3	Apr-11	12,408,713	11,466,248	942,465	7.6

Historical Unemployment Rates



Permian Basin WDA Industry Composition 3rd Quarter 2011



Total WDA Claims

Continued Claims for the Week of the 12th				
	Mar-12	Apr-11	Jan-00	OTY
Continued	796	895	995	-199

Texas Unemployment Insurance Claims

Continued Claims for the Week of the 12th				
	Apr-12	Mar-12	Apr-11	OTY
Continued	125,487	133,295	139,992	-14,505

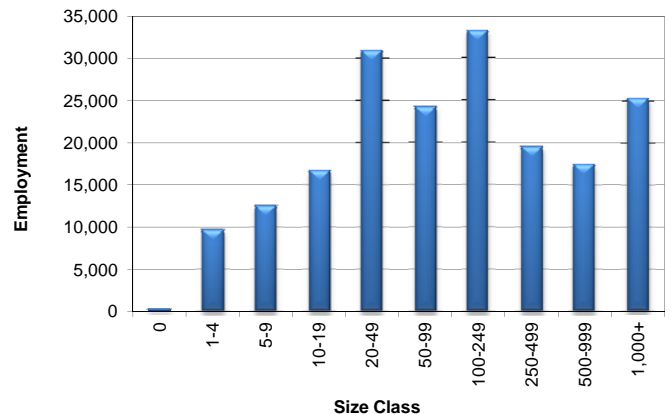
Permian Basin WDA Average Weekly Wage

	Permian Basin	Texas
3rd Quarter 2011	\$957.72	\$931.50
2nd Quarter 2011	\$905.74	\$899.57
3rd Quarter 2010	\$859.29	\$876.29
Quarter Change	\$51.98	\$31.93
OTY Change	\$98.43	\$55.21

NAICS Covered Employment Quarterly Data 3rd Quarter 2011

SUPER SECTOR	Employment	Change	
		Quarter	Year
Construction	13,421	331	1,938
Education & Health Services	15,220	-109	74
Federal	1,986	-15	-173
Financial Activities	7,915	200	369
Information	2,018	-15	3
Leisure & Hospitality	18,087	167	1,453
Local	25,121	-1,702	-576
Manufacturing	9,627	261	1,188
Natural Resources & Mining	34,445	2,010	5,519
Nonclassified	101	41	26
Other Services	6,185	151	421
Professional & Business Services	13,920	291	1,261
State	3,965	-221	-229
Trade, Transportation & Utilities	37,540	1,098	2,859
TOTAL	189,551	2,488	14,133

Size Class Employment Composition 3rd Quarter 2011



*Counties in WDA: Andrews, Borden, Crane, Dawson, Ector, Gaines, Glasscock, Howard, Loving, Martin, Midland, Pecos, Reeves, Terrell, Upton, Ward, & Winkler

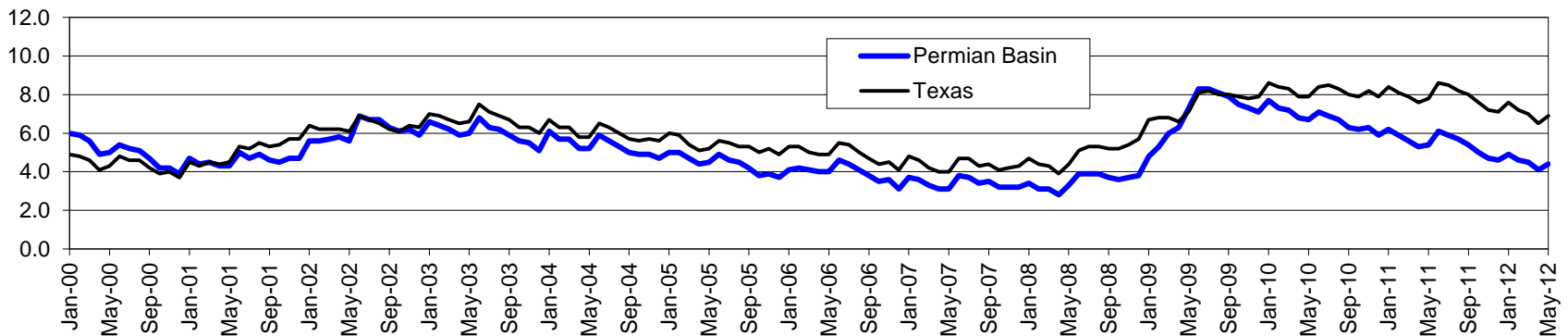
Area	Area Type	Latest Month				Month Ago				Year Ago			
		April				March				April			
		2012				2012				2011			
		Labor Force	Employment	Unemployment	Rate	Labor Force	Employment	Unemployment	Rate	Labor Force	Employment	Unemployment	Rate
Texas	State	12,547,852	11,733,325	814,527	6.5	12,531,173	11,655,250	875,923	7.0	12,408,713	11,466,248	942,465	7.6
Midland	MSA	84,675	81,727	2,948	3.5	83,635	80,516	3,119	3.7	82,987	79,488	3,499	4.2
Odessa	MSA	83,066	79,723	3,343	4.0	81,965	78,383	3,582	4.4	77,294	72,809	4,485	5.8
Permian Basin	WDA	234,399	224,703	9,696	4.1	231,527	221,204	10,323	4.5	225,942	213,869	12,073	5.3
Andrews	County	7,945	7,638	307	3.9	7,848	7,526	322	4.1	7,691	7,312	379	4.9
Borden	County	602	584	18	3.0	572	554	18	3.1	548	528	20	3.6
Crane	County	1,732	1,631	101	5.8	1,754	1,649	105	6.0	1,741	1,619	122	7.0
Dawson	County	5,528	5,161	367	6.6	5,544	5,153	391	7.1	5,558	5,135	423	7.6
Ector	County	83,066	79,723	3,343	4.0	81,965	78,383	3,582	4.4	77,294	72,809	4,485	5.8
Gaines	County	7,980	7,635	345	4.3	7,817	7,452	365	4.7	7,823	7,408	415	5.3
Glasscock	County	722	692	30	4.2	704	674	30	4.3	672	642	30	4.5
Howard	County	14,220	13,384	836	5.9	14,150	13,256	894	6.3	14,181	13,229	952	6.7
Loving	County	43	38	5	11.6	41	37	4	9.8	41	37	4	9.8
Martin	County	2,653	2,553	100	3.8	2,568	2,462	106	4.1	2,491	2,361	130	5.2
Midland	County	84,675	81,727	2,948	3.5	83,635	80,516	3,119	3.7	82,987	79,488	3,499	4.2
Pecos	County	9,049	8,662	387	4.3	8,953	8,525	428	4.8	9,003	8,528	475	5.3
Reeves	County	4,799	4,394	405	8.4	4,784	4,352	432	9.0	4,815	4,313	502	10.4
Terrell	County	415	390	25	6.0	408	380	28	6.9	404	370	34	8.4
Upton	County	1,965	1,900	65	3.3	1,952	1,885	67	3.4	1,909	1,828	81	4.2
Ward	County	5,372	5,125	247	4.6	5,280	5,024	256	4.8	5,210	4,896	314	6.0
Winkler	County	3,633	3,466	167	4.6	3,552	3,376	176	5.0	3,574	3,366	208	5.8
Big Spring	City	10,327	9,675	652	6.3	10,268	9,583	685	6.7	10,333	9,563	770	7.5
Midland	City	69,203	66,807	2,396	3.5	68,357	65,817	2,540	3.7	67,847	64,977	2,870	4.2
Odessa	City	60,764	58,331	2,433	4.0	59,942	57,352	2,590	4.3	56,574	53,333	3,241	5.7

Permian Basin Workforce Development Area*

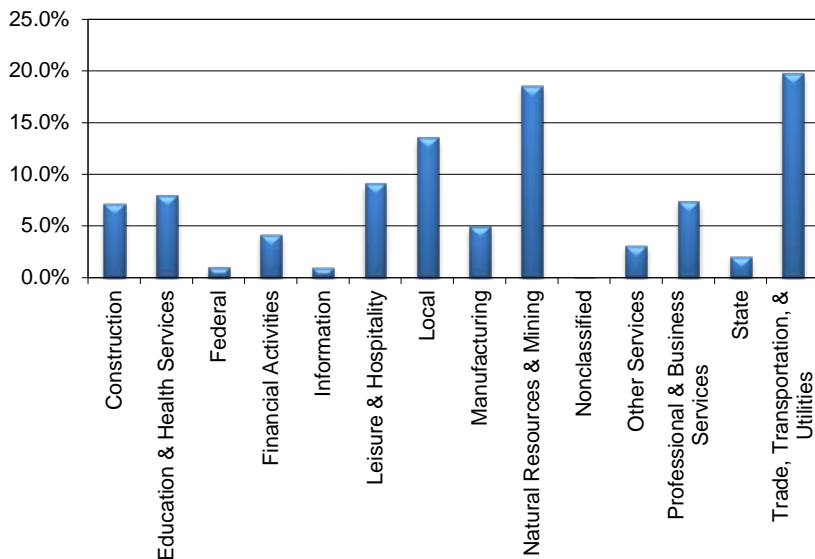
May 2012

Permian Basin WDA					Texas				
	CLF	Employed	Unemployed	Rate		CLF	Employed	Unemployed	Rate
May-12	235,645	225,197	10,448	4.4	May-12	12,606,775	11,739,561	867,214	6.9
Apr-12	234,018	224,334	9,684	4.1	Apr-12	12,548,131	11,734,094	814,037	6.5
May-11	226,646	214,350	12,296	5.4	May-11	12,424,587	11,454,011	970,576	7.8

Historical Unemployment Rates



Permian Basin WDA Industry Composition
4th Quarter 2011



Total WDA Claims

Continued Claims for the Week of the 12th

	May-12	Apr-12	May-11	OTY
Continued	789	802	910	-121

Texas Unemployment Insurance Claims

Continued Claims for the Week of the 12th

	May-12	Apr-12	May-11	OTY
Continued	125,238	126,440	139,657	-14,419

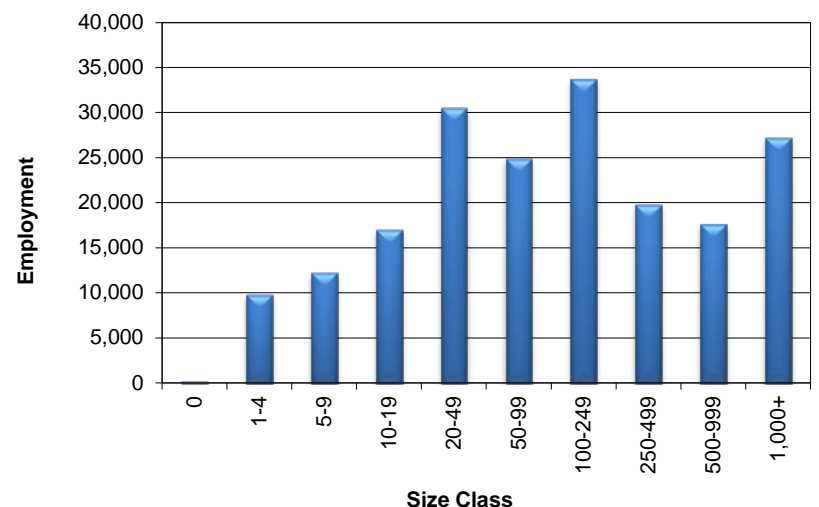
Permian Basin WDA
Average Weekly Wage

	Permian Basin	Texas
4th Quarter 2011	\$1,018.34	\$972.70
3rd Quarter 2011	\$957.73	\$931.66
4th Quarter 2010	\$965.23	\$976.19
Quarter Change	\$60.61	\$41.04
OTY Change	\$53.11	-\$3.49

NAICS Covered Employment Quarterly Data
4th Quarter 2011

SUPER SECTOR	Employment	Change	
		Quarter	Year
Construction	13,829	406	2,002
Education & Health Services	15,403	127	-26
Federal	1,973	-15	-138
Financial Activities	8,161	170	569
Information	1,962	-57	-74
Leisure & Hospitality	17,649	-358	1,341
Local	26,275	1,162	-1,008
Manufacturing	9,658	8	965
Natural Resources & Mining	35,992	1,592	5,325
Nonclassified	106	-27	52
Other Services	6,051	-141	318
Professional & Business Services	14,215	332	1,065
State	4,041	75	-248
Trade, Transportation, & Utilities	38,288	732	2,928
TOTAL	193,603	4,006	13,071

Size Class Employment Composition
4th Quarter 2011



*Counties in WDA: Andrews, Borden, Crane, Dawson, Ector, Gaines, Glasscock, Howard, Loving, Martin, Midland, Pecos, Reeves, Terrell, Upton, Ward, & Winkler

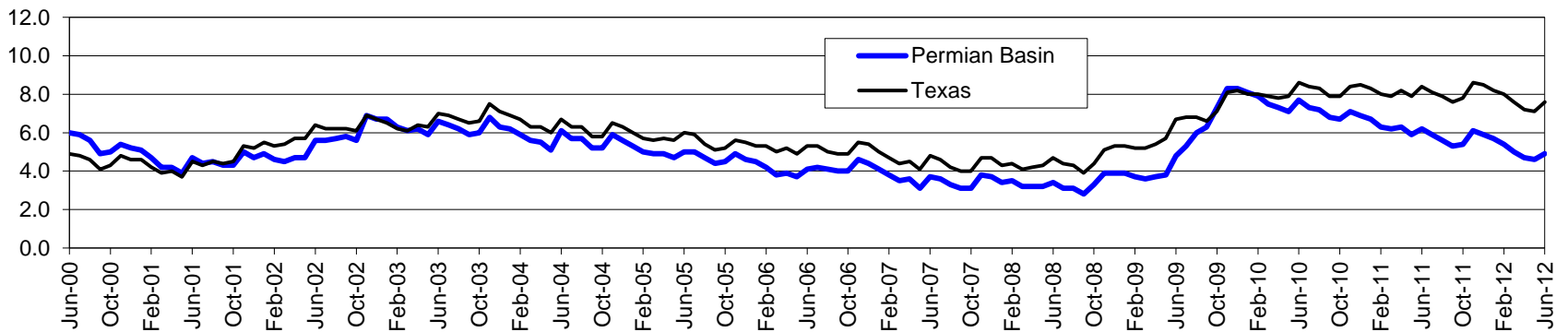
Area	Area Type	Latest Month				Month Ago				Year Ago			
		May				April				May			
		2012				2012				2011			
		Labor Force	Employment	Unemployment	Rate	Labor Force	Employment	Unemployment	Rate	Labor Force	Employment	Unemployment	Rate
Texas	State	12,606,775	11,739,561	867,214	6.9	12,548,131	11,734,094	814,037	6.5	12,424,587	11,454,011	970,576	7.8
Midland	MSA	85,589	82,365	3,224	3.8	84,701	81,755	2,946	3.5	83,350	79,732	3,618	4.3
Odessa	MSA	83,058	79,494	3,564	4.3	82,668	79,331	3,337	4.0	77,884	73,377	4,507	5.8
Permian Basin	WDA	235,645	225,197	10,448	4.4	234,018	224,334	9,684	4.1	226,646	214,350	12,296	5.4
Andrews	County	8,022	7,689	333	4.2	7,943	7,635	308	3.9	7,744	7,356	388	5.0
Borden	County	596	578	18	3.0	602	584	18	3.0	522	503	19	3.6
Crane	County	1,742	1,633	109	6.3	1,732	1,631	101	5.8	1,732	1,611	121	7.0
Dawson	County	5,601	5,208	393	7.0	5,527	5,161	366	6.6	5,507	5,074	433	7.9
Ector	County	83,058	79,494	3,564	4.3	82,668	79,331	3,337	4.0	77,884	73,377	4,507	5.8
Gaines	County	8,020	7,644	376	4.7	7,981	7,636	345	4.3	7,724	7,301	423	5.5
Glasscock	County	739	706	33	4.5	722	692	30	4.2	651	621	30	4.6
Howard	County	14,383	13,477	906	6.3	14,220	13,384	836	5.9	14,286	13,303	983	6.9
Loving	County	43	38	5	11.6	43	38	5	11.6	38	34	4	10.5
Martin	County	2,667	2,558	109	4.1	2,654	2,554	100	3.8	2,459	2,328	131	5.3
Midland	County	85,589	82,365	3,224	3.8	84,701	81,755	2,946	3.5	83,350	79,732	3,618	4.3
Pecos	County	9,009	8,595	414	4.6	9,048	8,662	386	4.3	8,920	8,434	486	5.4
Reeves	County	4,724	4,295	429	9.1	4,797	4,393	404	8.4	4,703	4,206	497	10.6
Terrell	County	421	394	27	6.4	415	390	25	6.0	401	365	36	9.0
Upton	County	1,953	1,883	70	3.6	1,964	1,900	64	3.3	1,872	1,786	86	4.6
Ward	County	5,451	5,189	262	4.8	5,368	5,122	246	4.6	5,281	4,966	315	6.0
Winkler	County	3,627	3,451	176	4.9	3,633	3,466	167	4.6	3,572	3,353	219	6.1
Big Spring	City	10,444	9,743	701	6.7	10,324	9,675	649	6.3	10,385	9,617	768	7.4
Midland	City	69,913	67,328	2,585	3.7	69,223	66,830	2,393	3.5	68,115	65,176	2,939	4.3
Odessa	City	60,777	58,174	2,603	4.3	60,476	58,050	2,426	4.0	57,026	53,744	3,282	5.8

Permian Basin Workforce Development Area*

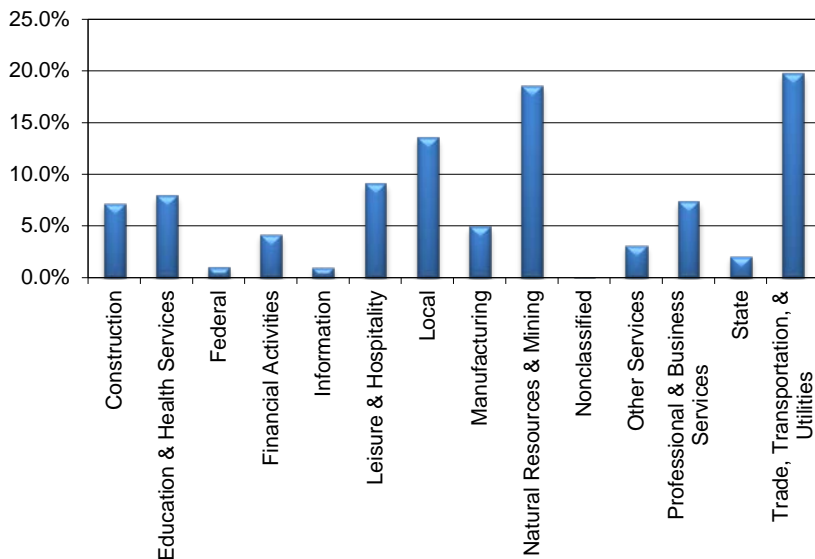
June 2012

Permian Basin WDA					Texas				
	CLF	Employed	Unemployed	Rate		CLF	Employed	Unemployed	Rate
Jun-12	237,630	225,674	11,956	5.0	Jun-12	12,723,470	11,758,783	964,687	7.6
May-12	235,639	225,200	10,439	4.4	May-12	12,605,727	11,739,008	866,719	6.9
Jun-11	228,484	214,454	14,030	6.1	Jun-11	12,498,975	11,425,043	1,073,932	8.6

Historical Unemployment Rates



Permian Basin WDA Industry Composition
4th Quarter 2011



Total WDA Claims

Continued Claims for the Week of the 12th

	Jun-12	May-12	Jun-11	OTY
Continued	911	801	1,050	-139

Texas Unemployment Insurance Claims

Continued Claims for the Week of the 12th

	Jun-12	May-12	Jun-11	OTY
Continued	136,976	126,341	150,214	-13,238

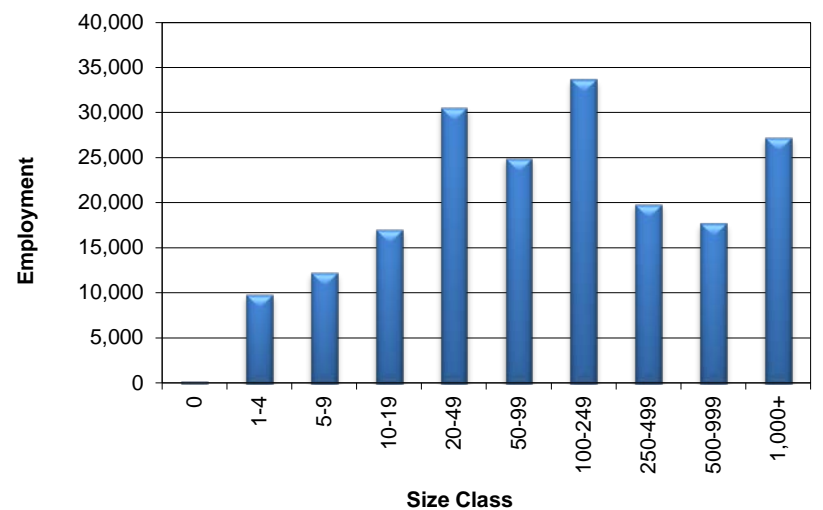
Permian Basin WDA
Average Weekly Wage

	Permian Basin	Texas
4th Quarter 2011	\$1,018.34	\$972.70
3rd Quarter 2011	\$957.73	\$931.66
4th Quarter 2010	\$965.23	\$976.19
Quarter Change	\$60.61	\$41.04
OTY Change	\$53.11	-\$3.49

NAICS Covered Employment Quarterly Data
4th Quarter 2011

SUPER SECTOR	Employment	Change	
		Quarter	Year
Construction	13,829	406	2,002
Education & Health Services	15,403	127	-26
Federal	1,973	-15	-138
Financial Activities	8,161	170	569
Information	1,962	-57	-74
Leisure & Hospitality	17,649	-358	1,341
Local	26,275	1,162	-1,008
Manufacturing	9,658	8	965
Natural Resources & Mining	35,992	1,592	5,325
Nonclassified	106	-27	52
Other Services	6,051	-141	318
Professional & Business Services	14,215	332	1,065
State	4,041	75	-248
Trade, Transportation, & Utilities	38,288	732	2,928
TOTAL	193,603	4,006	13,071

Size Class Employment Composition
4th Quarter 2011



*Counties in WDA: Andrews, Borden, Crane, Dawson, Ector, Gaines, Glasscock, Howard, Loving, Martin, Midland, Pecos, Reeves, Terrell, Upton, Ward, & Winkler

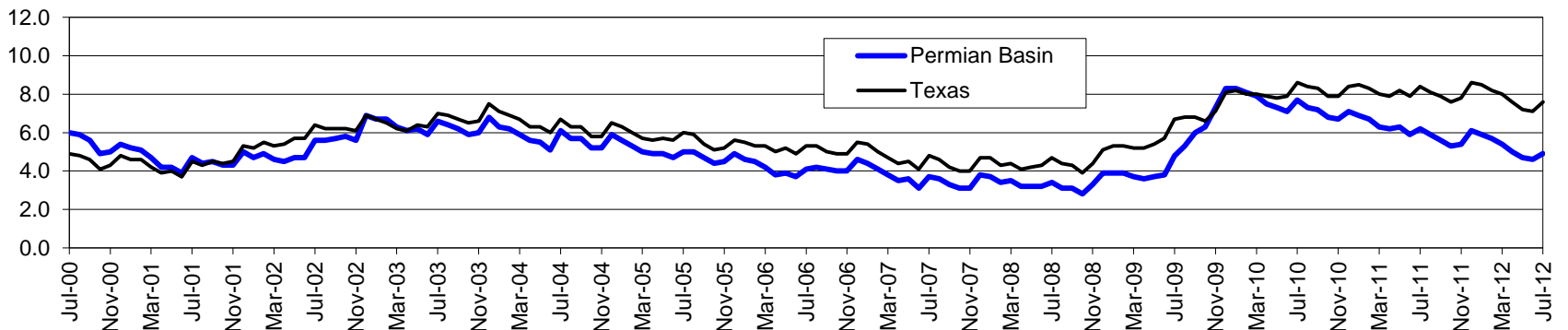
Area	Area Type	Latest Month				Month Ago				Year Ago			
		June				May				June			
		2012				2012				2011			
		Labor Force	Employment	Unemployment	Rate	Labor Force	Employment	Unemployment	Rate	Labor Force	Employment	Unemployment	Rate
Texas	State	12,723,470	11,758,783	964,687	7.6	12,605,727	11,739,008	866,719	6.9	12,498,975	11,425,043	1,073,932	8.6
Midland	MSA	85,904	82,227	3,677	4.3	85,358	82,136	3,222	3.8	83,625	79,493	4,132	4.9
Odessa	MSA	83,424	79,312	4,112	4.9	83,290	79,727	3,563	4.3	78,476	73,400	5,076	6.5
Permian Basin	WDA	237,630	225,674	11,956	5.0	235,639	225,200	10,439	4.4	228,484	214,454	14,030	6.1
Andrews	County	8,215	7,835	380	4.6	8,022	7,690	332	4.1	7,768	7,329	439	5.7
Borden	County	594	576	18	3.0	596	578	18	3.0	524	503	21	4.0
Crane	County	1,793	1,669	124	6.9	1,742	1,633	109	6.3	1,795	1,650	145	8.1
Dawson	County	5,635	5,213	422	7.5	5,599	5,207	392	7.0	5,528	5,051	477	8.6
Ector	County	83,424	79,312	4,112	4.9	83,290	79,727	3,563	4.3	78,476	73,400	5,076	6.5
Gaines	County	8,126	7,692	434	5.3	8,019	7,644	375	4.7	7,795	7,304	491	6.3
Glasscock	County	757	723	34	4.5	738	706	32	4.3	687	653	34	4.9
Howard	County	14,697	13,637	1,060	7.2	14,381	13,475	906	6.3	14,484	13,314	1,170	8.1
Loving	County	43	38	5	11.6	43	38	5	11.6	39	35	4	10.3
Martin	County	2,695	2,571	124	4.6	2,666	2,557	109	4.1	2,477	2,330	147	5.9
Midland	County	85,904	82,227	3,677	4.3	85,358	82,136	3,222	3.8	83,625	79,493	4,132	4.9
Pecos	County	9,173	8,718	455	5.0	9,007	8,594	413	4.6	9,021	8,488	533	5.9
Reeves	County	4,862	4,367	495	10.2	4,725	4,295	430	9.1	4,874	4,248	626	12.8
Terrell	County	436	406	30	6.9	421	394	27	6.4	408	369	39	9.6
Upton	County	1,950	1,872	78	4.0	1,953	1,883	70	3.6	1,935	1,840	95	4.9
Ward	County	5,604	5,302	302	5.4	5,452	5,191	261	4.8	5,409	5,051	358	6.6
Winkler	County	3,722	3,516	206	5.5	3,627	3,452	175	4.8	3,639	3,396	243	6.7
Big Spring	City	10,672	9,858	814	7.6	10,441	9,741	700	6.7	10,546	9,625	921	8.7
Midland	City	70,197	67,216	2,981	4.2	69,727	67,141	2,586	3.7	68,362	64,981	3,381	4.9
Odessa	City	61,028	58,042	2,986	4.9	60,942	58,339	2,603	4.3	57,486	53,758	3,728	6.5

Permian Basin Workforce Development Area*

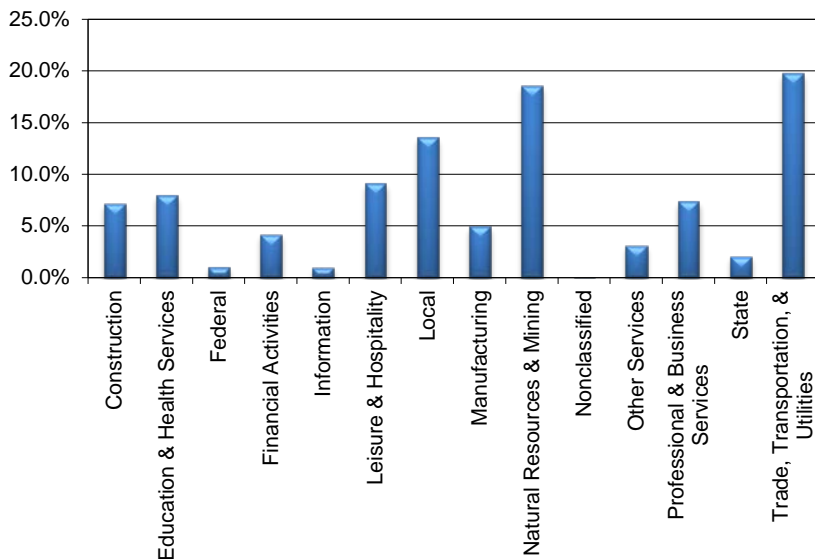
July 2012

Permian Basin WDA					Texas				
	CLF	Employed	Unemployed	Rate		CLF	Employed	Unemployed	Rate
Jul-12	241,156	229,190	11,966	5.0	Jul-12	12,729,393	11,768,848	960,545	7.5
Jun-12	237,728	225,781	11,947	5.0	Jun-12	12,723,520	11,758,990	964,530	7.6
Jul-11	230,280	216,617	13,663	5.9	Jul-11	12,497,951	11,438,033	1,059,918	8.5

Historical Unemployment Rates



Permian Basin WDA Industry Composition 4th Quarter 2011



Total WDA Claims

Continued Claims for the Week of the 12th

	Jul-12	Jun-12	Jul-11	OTY
Continued	921	917	1,066	-145

Texas Unemployment Insurance Claims

Continued Claims for the Week of the 12th

	Jul-12	Jun-12	Jul-11	OTY
Continued	141,452	138,074	156,006	-14,554

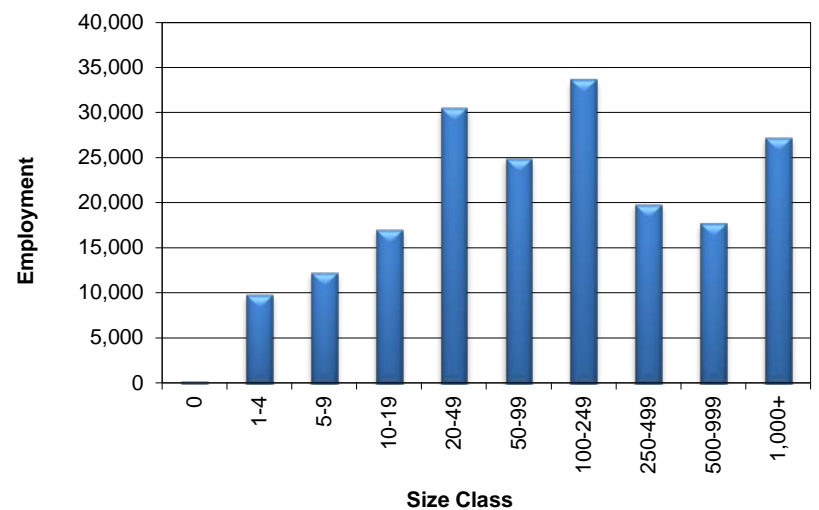
Permian Basin WDA Average Weekly Wage

	Permian Basin	Texas
4th Quarter 2011	\$1,018.34	\$972.70
3rd Quarter 2011	\$957.73	\$931.66
4th Quarter 2010	\$965.23	\$976.19
Quarter Change	\$60.61	\$41.04
OTY Change	\$53.11	-\$3.49

NAICS Covered Employment Quarterly Data 4th Quarter 2011

SUPER SECTOR	Employment	Change	
		Quarter	Year
Construction	13,829	406	2,002
Education & Health Services	15,403	127	-26
Federal	1,973	-15	-138
Financial Activities	8,161	170	569
Information	1,962	-57	-74
Leisure & Hospitality	17,649	-358	1,341
Local	26,275	1,162	-1,008
Manufacturing	9,658	8	965
Natural Resources & Mining	35,992	1,592	5,325
Nonclassified	106	-27	52
Other Services	6,051	-141	318
Professional & Business Services	14,215	332	1,065
State	4,041	75	-248
Trade, Transportation, & Utilities	38,288	732	2,928
TOTAL	193,603	4,006	13,071

Size Class Employment Composition 4th Quarter 2011



*Counties in WDA: Andrews, Borden, Crane, Dawson, Ector, Gaines, Glasscock, Howard, Loving, Martin, Midland, Pecos, Reeves, Terrell, Upton, Ward, & Winkler

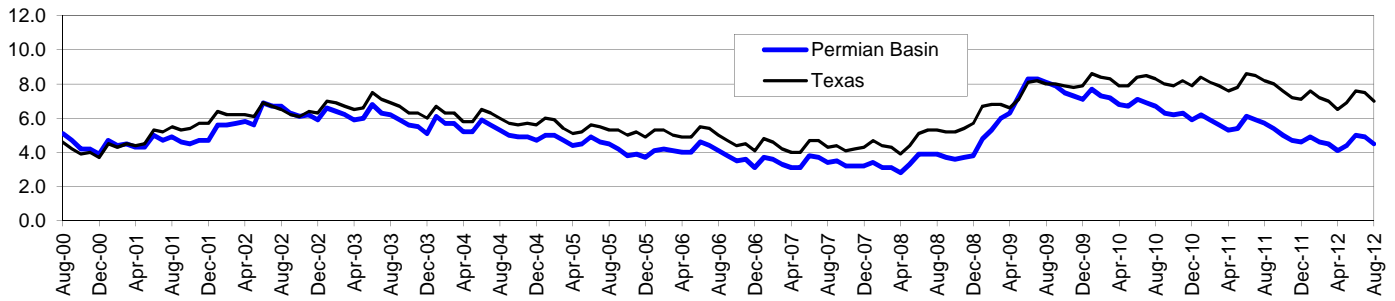
Area	Area Type	Latest Month				Month Ago				Year Ago			
		July				June				July			
		2012				2012				2011			
		Labor Force	Employment	Unemployment	Rate	Labor Force	Employment	Unemployment	Rate	Labor Force	Employment	Unemployment	Rate
Texas	State	12,729,393	11,768,848	960,545	7.5	12,723,520	11,758,990	964,530	7.6	12,497,951	11,438,033	1,059,918	8.5
Midland	MSA	88,347	84,662	3,685	4.2	85,971	82,299	3,672	4.3	84,504	80,454	4,050	4.8
Odessa	MSA	84,359	80,243	4,116	4.9	83,659	79,551	4,108	4.9	79,500	74,551	4,949	6.2
Permian Basin	WDA	241,156	229,190	11,966	5.0	237,728	225,781	11,947	5.0	230,280	216,617	13,663	5.9
Andrews	County	8,426	8,043	383	4.5	8,214	7,835	379	4.6	7,701	7,275	426	5.5
Borden	County	591	572	19	3.2	593	575	18	3.0	537	516	21	3.9
Crane	County	1,851	1,735	116	6.3	1,794	1,668	126	7.0	1,774	1,638	136	7.7
Dawson	County	5,447	5,032	415	7.6	5,636	5,212	424	7.5	5,525	5,045	480	8.7
Ector	County	84,359	80,243	4,116	4.9	83,659	79,551	4,108	4.9	79,500	74,551	4,949	6.2
Gaines	County	8,200	7,769	431	5.3	8,126	7,693	433	5.3	7,828	7,343	485	6.2
Glasscock	County	737	702	35	4.7	757	723	34	4.5	711	679	32	4.5
Howard	County	14,683	13,623	1,060	7.2	14,692	13,634	1,058	7.2	14,342	13,188	1,154	8.0
Loving	County	44	39	5	11.4	43	38	5	11.6	43	39	4	9.3
Martin	County	2,638	2,507	131	5.0	2,629	2,505	124	4.7	2,517	2,373	144	5.7
Midland	County	88,347	84,662	3,685	4.2	85,971	82,299	3,672	4.3	84,504	80,454	4,050	4.8
Pecos	County	9,041	8,594	447	4.9	9,039	8,584	455	5.0	9,062	8,544	518	5.7
Reeves	County	4,884	4,382	502	10.3	4,861	4,367	494	10.2	4,771	4,225	546	11.4
Terrell	County	447	416	31	6.9	435	405	30	6.9	413	377	36	8.7
Upton	County	2,010	1,928	82	4.1	1,950	1,872	78	4.0	2,014	1,915	99	4.9
Ward	County	5,713	5,412	301	5.3	5,606	5,303	303	5.4	5,398	5,048	350	6.5
Winkler	County	3,738	3,531	207	5.5	3,723	3,517	206	5.5	3,640	3,407	233	6.4
Big Spring	City	10,655	9,848	807	7.6	10,668	9,856	812	7.6	10,433	9,534	899	8.6
Midland	City	72,205	69,206	2,999	4.2	70,252	67,274	2,978	4.2	69,097	65,766	3,331	4.8
Odessa	City	61,709	58,742	2,967	4.8	61,196	58,214	2,982	4.9	58,232	54,597	3,635	6.2

Permian Basin Workforce Development Area*

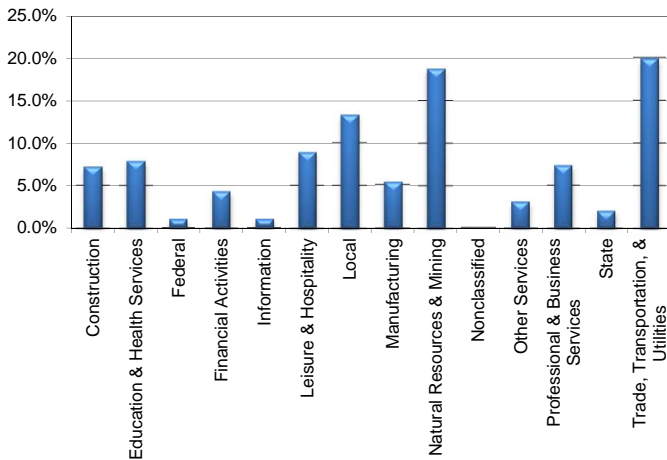
August 2012

Permian Basin WDA					Texas				
	CLF	Employed	Unemployed	Rate		CLF	Employed	Unemployed	Rate
Aug-12	238,360	227,553	10,807	4.5	Aug-12	12,625,940	11,738,210	887,730	7.0
Jul-12	242,257	230,318	11,939	4.9	Jul-12	12,727,957	11,768,691	959,266	7.5
Aug-11	231,013	217,956	13,057	5.7	Aug-11	12,479,696	11,452,756	1,026,940	8.2

Historical Unemployment Rates



Permian Basin WDA Industry Composition 1st Quarter 2012



Total WDA Claims

Continued Claims for the Week of the 12th				
	Aug-12	Jul-12	Aug-11	OTY
Continued	925	928	1,058	-133

Texas Unemployment Insurance Claims

Continued Claims for the Week of the 12th				
	Aug-12	Jul-12	Aug-11	OTY
Continued	134,067	142,604	151,488	-17,421

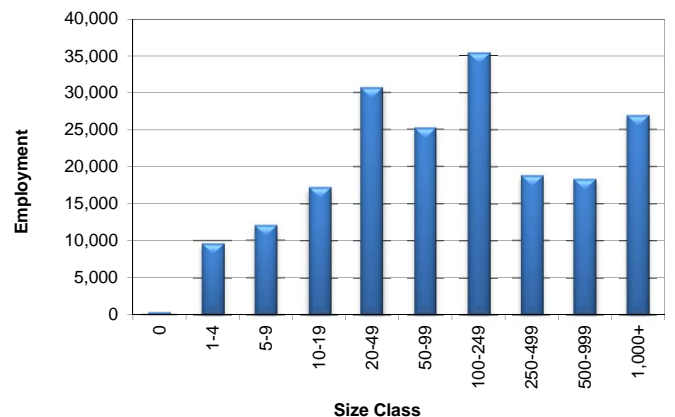
Permian Basin WDA Average Weekly Wage

	Permian Basin	Texas
1st Quarter 2012	\$1,044.60	\$1,012.73
4th Quarter 2011	\$1,019.31	\$972.66
1st Quarter 2011	\$953.43	\$944.26
Quarter Change	\$25.29	\$40.07
OTY Change	\$91.17	\$68.47

NAICS Covered Employment Quarterly Data 1st Quarter 2012

SUPER SECTOR	Employment	Change	
		Quarter	Year
Construction	14,038	196	2,074
Education & Health Services	15,350	-56	65
Federal	1,931	-42	-132
Financial Activities	8,242	71	655
Information	1,926	-36	-83
Leisure & Hospitality	17,333	-295	661
Local	25,881	-289	-1,082
Manufacturing	10,397	684	1,411
Natural Resources & Mining	36,506	476	5,654
Nonclassified	31	-24	-43
Other Services	5,986	-81	195
Professional & Business Services	14,288	109	870
State	3,966	-70	-261
Trade, Transportation, & Utilities	38,796	386	2,863
TOTAL	194,671	1,029	12,847

Size Class Employment Composition 1st Quarter 2012



*Counties in WDA: Andrews, Borden, Crane, Dawson, Ector, Gaines, Glasscock, Howard, Loving, Martin, Midland, Pecos, Reeves, Terrell, Upton, Ward, & Winkler

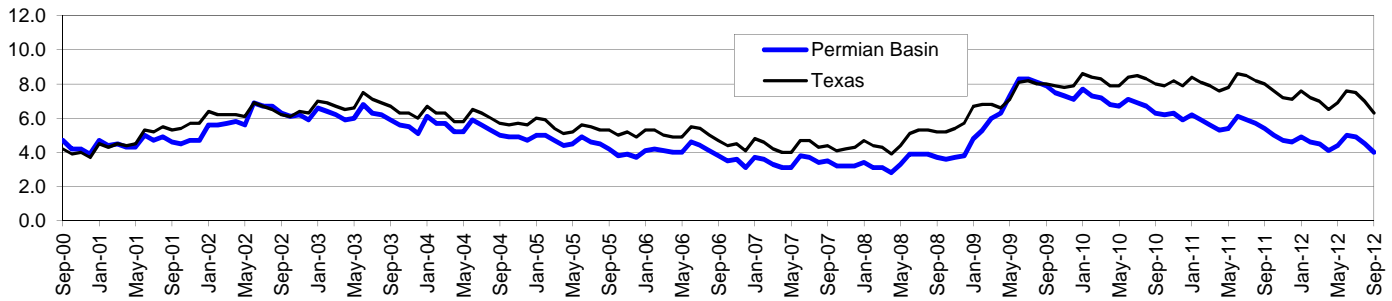
Area	Area Type	Latest Month				Month Ago				Year Ago			
		August				July				August			
		2012				2012				2011			
		Labor Force	Employment	Unemployment	Rate	Labor Force	Employment	Unemployment	Rate	Labor Force	Employment	Unemployment	Rate
Texas	State	12,625,940	11,738,210	887,730	7.0	12,727,957	11,768,691	959,266	7.5	12,479,696	11,452,756	1,026,940	8.2
Midland	MSA	87,686	84,386	3,300	3.8	88,235	84,557	3,678	4.2	85,045	81,182	3,863	4.5
Odessa	MSA	83,146	79,387	3,759	4.5	85,588	81,481	4,107	4.8	79,430	74,683	4,747	6.0
Permian Basin	WDA	238,360	227,553	10,807	4.5	242,257	230,318	11,939	4.9	231,013	217,956	13,057	5.7
Andrews	County	8,489	8,145	344	4.1	8,433	8,051	382	4.5	7,788	7,386	402	5.2
Borden	County	570	554	16	2.8	591	572	19	3.2	555	536	19	3.4
Crane	County	1,869	1,765	104	5.6	1,851	1,734	117	6.3	1,783	1,645	138	7.7
Dawson	County	5,335	4,956	379	7.1	5,443	5,030	413	7.6	5,601	5,139	462	8.2
Ector	County	83,146	79,387	3,759	4.5	85,588	81,481	4,107	4.8	79,430	74,683	4,747	6.0
Gaines	County	7,892	7,505	387	4.9	8,194	7,764	430	5.2	7,824	7,369	455	5.8
Glasscock	County	697	667	30	4.3	736	702	34	4.6	731	700	31	4.2
Howard	County	14,460	13,523	937	6.5	14,674	13,617	1,057	7.2	14,327	13,234	1,093	7.6
Loving	County	41	37	4	9.8	44	39	5	11.4	43	39	4	9.3
Martin	County	2,548	2,432	116	4.6	2,636	2,506	130	4.9	2,525	2,388	137	5.4
Midland	County	87,686	84,386	3,300	3.8	88,235	84,557	3,678	4.2	85,045	81,182	3,863	4.5
Pecos	County	9,038	8,624	414	4.6	9,034	8,589	445	4.9	9,114	8,625	489	5.4
Reeves	County	4,772	4,313	459	9.6	4,885	4,383	502	10.3	4,807	4,277	530	11.0
Terrell	County	429	397	32	7.5	447	416	31	6.9	426	390	36	8.5
Upton	County	1,974	1,903	71	3.6	2,008	1,926	82	4.1	2,021	1,927	94	4.7
Ward	County	5,659	5,389	270	4.8	5,718	5,418	300	5.2	5,357	5,021	336	6.3
Winkler	County	3,755	3,570	185	4.9	3,740	3,533	207	5.5	3,636	3,415	221	6.1
Big Spring	City	10,487	9,776	711	6.8	10,649	9,844	805	7.6	10,418	9,567	851	8.2
Midland	City	71,665	68,980	2,685	3.7	72,112	69,120	2,992	4.1	69,535	66,361	3,174	4.6
Odessa	City	60,837	58,122	2,715	4.5	62,593	59,630	2,963	4.7	58,195	54,701	3,494	6.0

Permian Basin Workforce Development Area*

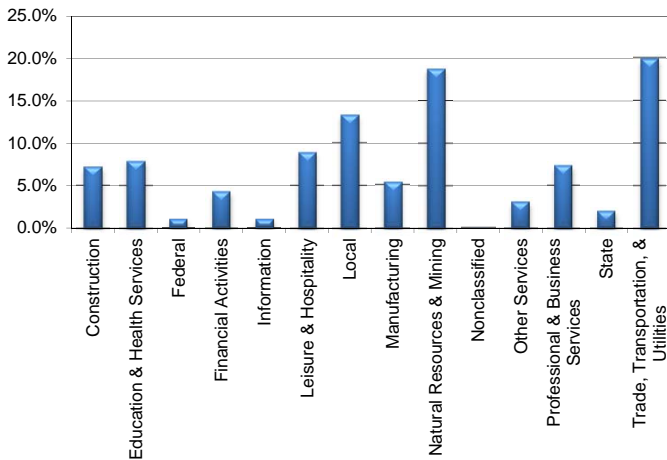
September 2012

Permian Basin WDA					Texas				
	CLF	Employed	Unemployed	Rate		CLF	Employed	Unemployed	Rate
Sep-12	239,390	229,791	9,599	4.0	Sep-12	12,642,436	11,840,384	802,052	6.3
Aug-12	238,680	227,888	10,792	4.5	Aug-12	12,625,263	11,738,126	887,137	7.0
Sep-11	232,643	219,974	12,669	5.4	Sep-11	12,525,570	11,523,010	1,002,560	8.0

Historical Unemployment Rates



Permian Basin WDA Industry Composition 1st Quarter 2012



Total WDA Claims

Continued Claims for the Week of the 12th				
	Sep-12	Aug-12	Sep-11	OTY
Continued	809	929	945	-136

Texas Unemployment Insurance Claims

Continued Claims for the Week of the 12th				
	Sep-12	Aug-12	Sep-11	OTY
Continued	125,046	135,191	139,763	-14,717

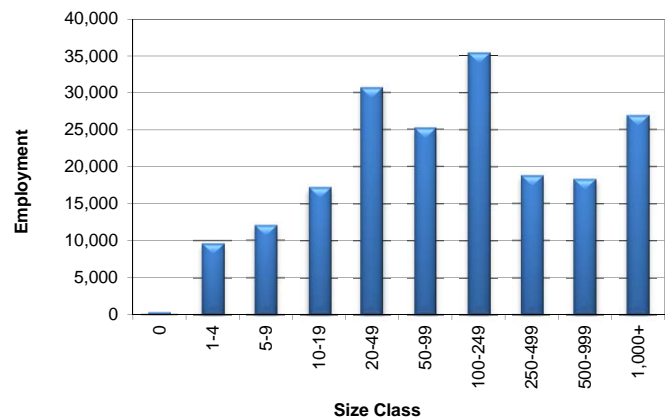
Permian Basin WDA Average Weekly Wage

	Permian Basin	Texas
1st Quarter 2012	\$1,044.60	\$1,012.73
4th Quarter 2011	\$1,019.31	\$972.66
1st Quarter 2011	\$953.43	\$944.26
Quarter Change	\$25.29	\$40.07
OTY Change	\$91.17	\$68.47

NAICS Covered Employment Quarterly Data 1st Quarter 2012

SUPER SECTOR	Employment	Change	
		Quarter	Year
Construction	14,038	196	2,074
Education & Health Services	15,350	-56	65
Federal	1,931	-42	-132
Financial Activities	8,242	71	655
Information	1,926	-36	-83
Leisure & Hospitality	17,333	-295	661
Local	25,881	-289	-1,082
Manufacturing	10,397	684	1,411
Natural Resources & Mining	36,506	476	5,654
Nonclassified	31	-24	-43
Other Services	5,986	-81	195
Professional & Business Services	14,288	109	870
State	3,966	-70	-261
Trade, Transportation, & Utilities	38,796	386	2,863
TOTAL	194,671	1,029	12,847

Size Class Employment Composition 1st Quarter 2012



*Counties in WDA: Andrews, Borden, Crane, Dawson, Ector, Gaines, Glasscock, Howard, Loving, Martin, Midland, Pecos, Reeves, Terrell, Upton, Ward, & Winkler

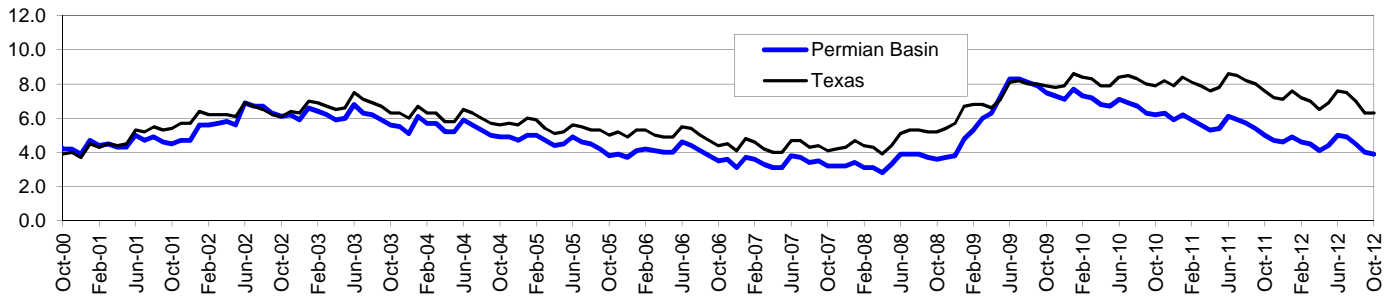
Area	Area Type	Latest Month				Month Ago				Year Ago			
		September				August				September			
		2012				2012				2011			
		Labor Force	Employment	Unemployment	Rate	Labor Force	Employment	Unemployment	Rate	Labor Force	Employment	Unemployment	Rate
Texas	State	12,642,436	11,840,384	802,052	6.3	12,625,263	11,738,126	887,137	7.0	12,525,570	11,523,010	1,002,560	8.0
Midland	MSA	88,368	85,416	2,952	3.3	87,863	84,568	3,295	3.8	85,461	81,663	3,798	4.4
Odessa	MSA	83,630	80,331	3,299	3.9	83,283	79,529	3,754	4.5	80,422	75,942	4,480	5.6
Permian Basin	WDA	239,390	229,791	9,599	4.0	238,680	227,888	10,792	4.5	232,643	219,974	12,669	5.4
Andrews	County	8,592	8,291	301	3.5	8,491	8,148	343	4.0	7,875	7,485	390	5.0
Borden	County	564	547	17	3.0	570	554	16	2.8	546	525	21	3.8
Crane	County	1,905	1,813	92	4.8	1,869	1,765	104	5.6	1,822	1,689	133	7.3
Dawson	County	5,314	4,968	346	6.5	5,335	4,956	379	7.1	5,601	5,137	464	8.3
Ector	County	83,630	80,331	3,299	3.9	83,283	79,529	3,754	4.5	80,422	75,942	4,480	5.6
Gaines	County	7,876	7,536	340	4.3	7,893	7,506	387	4.9	7,880	7,436	444	5.6
Glasscock	County	666	642	24	3.6	697	667	30	4.3	715	683	32	4.5
Howard	County	14,397	13,572	825	5.7	14,461	13,526	935	6.5	14,317	13,259	1,058	7.4
Loving	County	40	36	4	10.0	41	37	4	9.8	43	39	4	9.3
Martin	County	2,518	2,417	101	4.0	2,549	2,433	116	4.6	2,508	2,376	132	5.3
Midland	County	88,368	85,416	2,952	3.3	87,863	84,568	3,295	3.8	85,461	81,663	3,798	4.4
Pecos	County	8,983	8,601	382	4.3	9,038	8,625	413	4.6	9,075	8,602	473	5.2
Reeves	County	4,740	4,327	413	8.7	4,772	4,314	458	9.6	4,908	4,354	554	11.3
Terrell	County	422	393	29	6.9	429	397	32	7.5	418	384	34	8.1
Upton	County	1,924	1,859	65	3.4	1,975	1,904	71	3.6	2,019	1,926	93	4.6
Ward	County	5,723	5,479	244	4.3	5,659	5,389	270	4.8	5,401	5,053	348	6.4
Winkler	County	3,728	3,563	165	4.4	3,755	3,570	185	4.9	3,632	3,421	211	5.8
Big Spring	City	10,434	9,811	623	6.0	10,487	9,778	709	6.8	10,412	9,585	827	7.9
Midland	City	72,222	69,822	2,400	3.3	71,811	69,129	2,682	3.7	69,875	66,755	3,120	4.5
Odessa	City	61,224	58,814	2,410	3.9	60,940	58,227	2,713	4.5	58,929	55,612	3,317	5.6

Permian Basin Workforce Development Area*

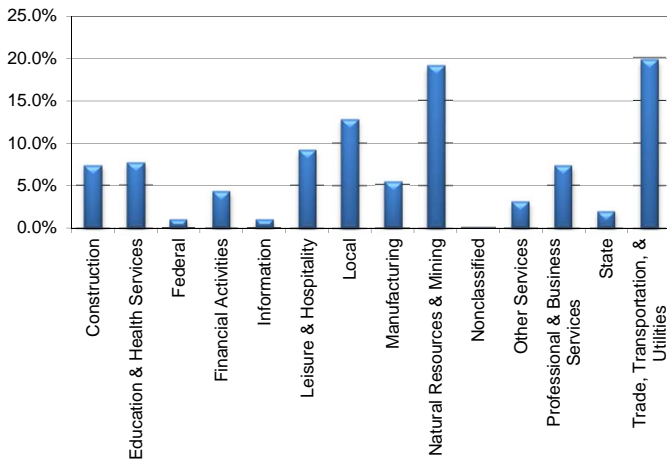
October 2012

Permian Basin WDA					Texas				
	CLF	Employed	Unemployed	Rate		CLF	Employed	Unemployed	Rate
Oct-12	239,769	230,344	9,425	3.9	Oct-12	12,671,549	11,879,161	792,388	6.3
Sep-12	239,168	229,578	9,590	4.0	Sep-12	12,641,619	11,840,055	801,564	6.3
Oct-11	232,081	220,368	11,713	5.0	Oct-11	12,514,986	11,565,060	949,926	7.6

Historical Unemployment Rates



Permian Basin WDA Industry Composition 2nd Quarter 2012



Total WDA Claims

Continued Claims for the Week of the 12th				
	Oct-12	Sep-12	Oct-11	OTY
Continued	804	817	978	-174

Texas Unemployment Insurance Claims

Continued Claims for the Week of the 12th				
	Oct-12	Sep-12	Oct-11	OTY
Continued	122,152	126,090	139,727	-17,575

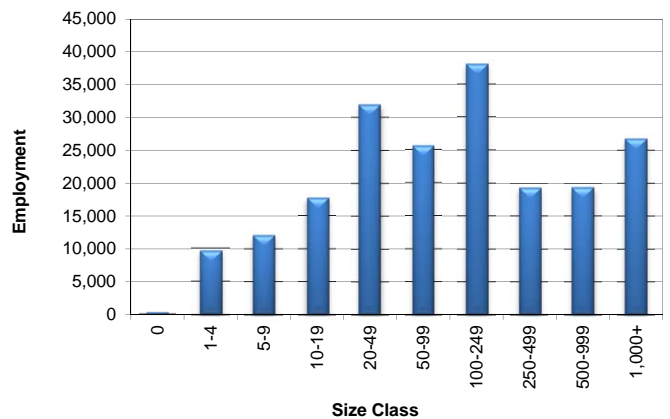
Permian Basin WDA Average Weekly Wage

	Permian Basin	Texas
2nd Quarter 2012	\$981.61	\$922.44
1st Quarter 2012	\$1,043.58	\$1,012.59
2nd Quarter 2011	\$905.52	\$899.44
Quarter Change	-\$61.97	-\$90.15
OTY Change	\$76.09	\$23.00

NAICS Covered Employment Quarterly Data 2nd Quarter 2012

SUPER SECTOR	Employment	Change	
		Quarter	Year
Construction	14,818	772	1,728
Education & Health Services	15,409	11	80
Federal	1,932	1	-71
Financial Activities	8,601	348	883
Information	1,902	-23	-132
Leisure & Hospitality	18,443	1,060	523
Local	25,825	-74	-1,000
Manufacturing	10,821	407	1,413
Natural Resources & Mining	38,490	1,998	6,054
Nonclassified	76	51	18
Other Services	6,254	265	219
Professional & Business Services	14,770	473	1,140
State	4,002	36	-184
Trade, Transportation, & Utilities	39,933	1,098	3,496
TOTAL	201,276	6,423	14,167

Size Class Employment Composition 2nd Quarter 2012



*Counties in WDA: Andrews, Borden, Crane, Dawson, Ector, Gaines, Glasscock, Howard, Loving, Martin, Midland, Pecos, Reeves, Terrell, Upton, Ward, & Winkler

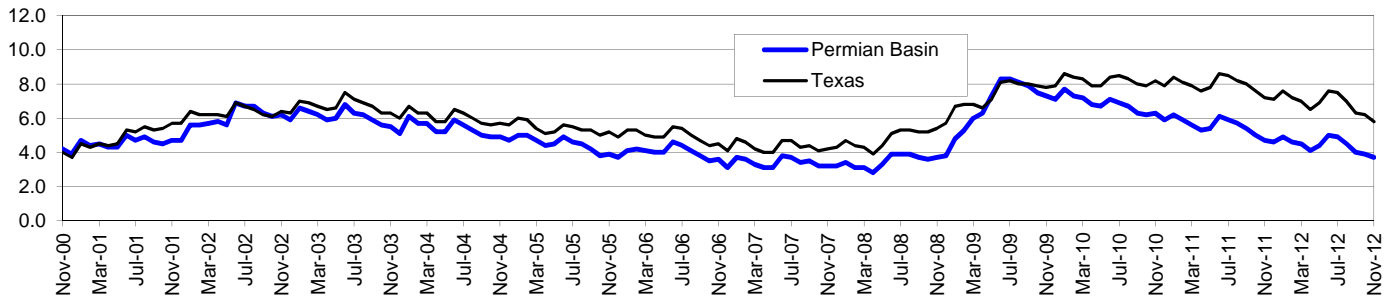
Area	Area Type	Latest Month				Month Ago				Year Ago			
		October				September				October			
		2012				2012				2011			
		Labor Force	Employment	Unemployment	Rate	Labor Force	Employment	Unemployment	Rate	Labor Force	Employment	Unemployment	Rate
Texas	State	12,671,549	11,879,161	792,388	6.3	12,641,619	11,840,055	801,564	6.3	12,514,986	11,565,060	949,926	7.6
Midland	MSA	88,345	85,469	2,876	3.3	88,154	85,204	2,950	3.3	85,389	81,903	3,486	4.1
Odessa	MSA	83,757	80,506	3,251	3.9	83,566	80,271	3,295	3.9	80,899	76,724	4,175	5.2
Permian Basin	WDA	239,769	230,344	9,425	3.9	239,168	229,578	9,590	4.0	232,081	220,368	11,713	5.0
Andrews	County	8,662	8,370	292	3.4	8,594	8,293	301	3.5	7,769	7,413	356	4.6
Borden	County	576	558	18	3.1	564	547	17	3.0	527	508	19	3.6
Crane	County	1,753	1,661	92	5.2	1,905	1,813	92	4.8	1,799	1,672	127	7.1
Dawson	County	5,379	5,060	319	5.9	5,317	4,971	346	6.5	5,540	5,104	436	7.9
Ector	County	83,757	80,506	3,251	3.9	83,566	80,271	3,295	3.9	80,899	76,724	4,175	5.2
Gaines	County	7,984	7,652	332	4.2	7,881	7,541	340	4.3	7,617	7,211	406	5.3
Glasscock	County	688	663	25	3.6	668	644	24	3.6	668	639	29	4.3
Howard	County	14,511	13,689	822	5.7	14,447	13,624	823	5.7	14,212	13,239	973	6.8
Loving	County	41	37	4	9.8	40	36	4	10.0	40	36	4	10.0
Martin	County	2,543	2,443	100	3.9	2,519	2,418	101	4.0	2,476	2,352	124	5.0
Midland	County	88,345	85,469	2,876	3.3	88,154	85,204	2,950	3.3	85,389	81,903	3,486	4.1
Pecos	County	8,965	8,586	379	4.2	8,989	8,606	383	4.3	8,923	8,486	437	4.9
Reeves	County	4,583	4,169	414	9.0	4,692	4,280	412	8.8	4,775	4,258	517	10.8
Terrell	County	425	398	27	6.4	422	393	29	6.9	391	358	33	8.4
Upton	County	1,960	1,895	65	3.3	1,925	1,860	65	3.4	1,997	1,913	84	4.2
Ward	County	5,762	5,518	244	4.2	5,724	5,481	243	4.2	5,393	5,080	313	5.8
Winkler	County	3,835	3,670	165	4.3	3,761	3,596	165	4.4	3,666	3,472	194	5.3
Big Spring	City	10,532	9,896	636	6.0	10,471	9,849	622	5.9	10,330	9,570	760	7.4
Midland	City	72,214	69,866	2,348	3.3	72,049	69,649	2,400	3.3	69,822	66,951	2,871	4.1
Odessa	City	61,287	58,941	2,346	3.8	61,178	58,768	2,410	3.9	59,262	56,178	3,084	5.2

Permian Basin Workforce Development Area*

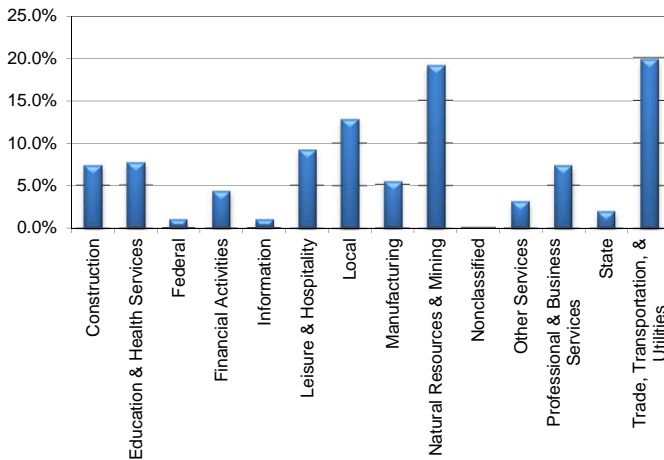
November 2012

Permian Basin WDA					Texas				
	CLF	Employed	Unemployed	Rate		CLF	Employed	Unemployed	Rate
Nov-12	237,843	229,099	8,744	3.7	Nov-12	12,628,770	11,891,259	737,511	5.8
Oct-12	240,036	230,626	9,410	3.9	Oct-12	12,671,606	11,879,708	791,898	6.2
Nov-11	230,187	219,300	10,887	4.7	Nov-11	12,503,742	11,600,625	903,117	7.2

Historical Unemployment Rates



Permian Basin WDA Industry Composition 2nd Quarter 2012



Total WDA Claims

Continued Claims for the Week of the 12th

	Nov-12	Oct-12	Nov-11	OTY
Continued	793	809	918	-125

Texas Unemployment Insurance Claims

Continued Claims for the Week of the 12th

	Nov-12	Oct-12	Nov-11	OTY
Continued	123,315	123,246	140,449	-17,134

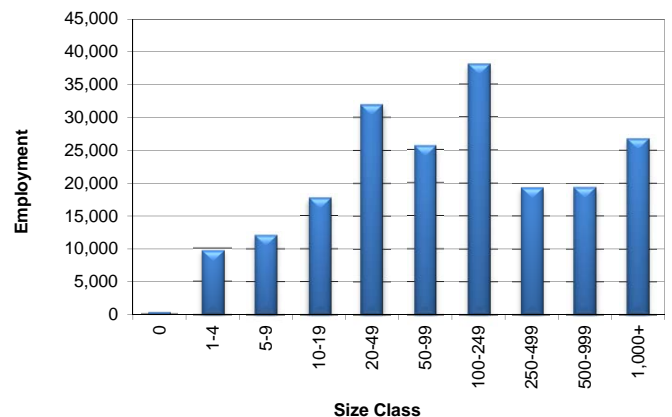
Permian Basin WDA Average Weekly Wage

	Permian Basin	Texas
2nd Quarter 2012	\$981.61	\$922.44
1st Quarter 2012	\$1,043.58	\$1,012.59
2nd Quarter 2011	\$905.52	\$899.44
Quarter Change	-\$61.97	-\$90.15
OTY Change	\$76.09	\$23.00

NAICS Covered Employment Quarterly Data 2nd Quarter 2012

SUPER SECTOR	Employment	Change	
		Quarter	Year
Construction	14,818	772	1,728
Education & Health Services	15,409	11	80
Federal	1,932	1	-71
Financial Activities	8,601	348	883
Information	1,902	-23	-132
Leisure & Hospitality	18,443	1,060	523
Local	25,825	-74	-1,000
Manufacturing	10,821	407	1,413
Natural Resources & Mining	38,490	1,998	6,054
Nonclassified	76	51	18
Other Services	6,254	265	219
Professional & Business Services	14,770	473	1,140
State	4,002	36	-184
Trade, Transportation, & Utilities	39,933	1,098	3,496
TOTAL	201,276	6,423	14,167

Size Class Employment Composition 2nd Quarter 2012



*Counties in WDA: Andrews, Borden, Crane, Dawson, Ector, Gaines, Glasscock, Howard, Loving, Martin, Midland, Pecos, Reeves, Terrell, Upton, Ward, & Winkler

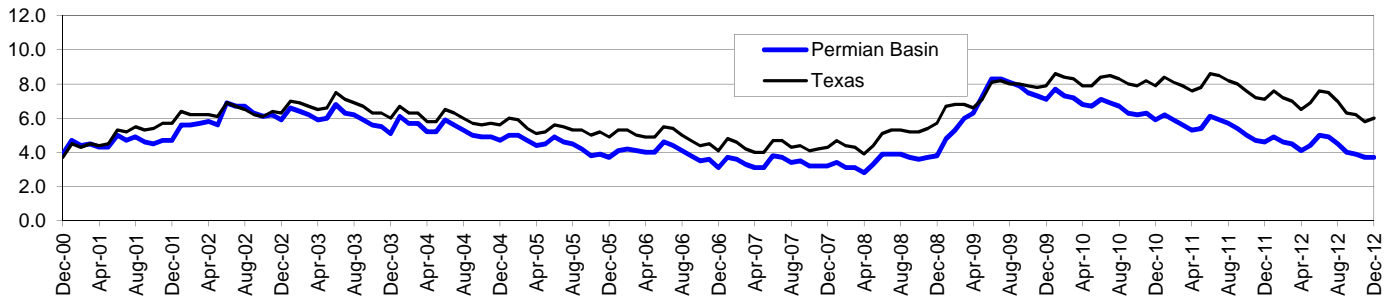
Area	Area Type	Latest Month				Month Ago				Year Ago			
		November				October				November			
		2012				2012				2011			
		Labor Force	Employment	Unemployment	Rate	Labor Force	Employment	Unemployment	Rate	Labor Force	Employment	Unemployment	Rate
Texas	State	12,628,770	11,891,259	737,511	5.8	12,671,606	11,879,708	791,898	6.2	12,503,742	11,600,625	903,117	7.2
Midland	MSA	87,434	84,781	2,653	3.0	88,290	85,421	2,869	3.2	84,754	81,512	3,242	3.8
Odessa	MSA	83,097	80,067	3,030	3.6	83,846	80,597	3,249	3.9	79,707	75,832	3,875	4.9
Permian Basin	WDA	237,843	229,099	8,744	3.7	240,036	230,626	9,410	3.9	230,187	219,300	10,887	4.7
Andrews	County	8,640	8,355	285	3.3	8,671	8,379	292	3.4	7,835	7,504	331	4.2
Borden	County	623	606	17	2.7	577	559	18	3.1	577	558	19	3.3
Crane	County	1,908	1,824	84	4.4	1,923	1,831	92	4.8	1,782	1,669	113	6.3
Dawson	County	5,291	4,990	301	5.7	5,383	5,065	318	5.9	5,585	5,190	395	7.1
Ector	County	83,097	80,067	3,030	3.6	83,846	80,597	3,249	3.9	79,707	75,832	3,875	4.9
Gaines	County	7,963	7,652	311	3.9	7,992	7,661	331	4.1	7,651	7,267	384	5.0
Glasscock	County	668	644	24	3.6	688	663	25	3.6	685	659	26	3.8
Howard	County	14,375	13,624	751	5.2	14,525	13,705	820	5.6	14,160	13,240	920	6.5
Loving	County	41	37	4	9.8	41	37	4	9.8	41	37	4	9.8
Martin	County	2,499	2,409	90	3.6	2,544	2,444	100	3.9	2,497	2,378	119	4.8
Midland	County	87,434	84,781	2,653	3.0	88,290	85,421	2,869	3.2	84,754	81,512	3,242	3.8
Pecos	County	8,859	8,511	348	3.9	8,974	8,596	378	4.2	8,824	8,423	401	4.5
Reeves	County	4,441	4,066	375	8.4	4,587	4,174	413	9.0	4,718	4,236	482	10.2
Terrell	County	409	385	24	5.9	425	398	27	6.4	404	372	32	7.9
Upton	County	1,955	1,892	63	3.2	1,962	1,897	65	3.3	1,985	1,905	80	4.0
Ward	County	5,790	5,562	228	3.9	5,768	5,524	244	4.2	5,349	5,068	281	5.3
Winkler	County	3,850	3,694	156	4.1	3,840	3,675	165	4.3	3,633	3,450	183	5.0
Big Spring	City	10,429	9,849	580	5.6	10,539	9,907	632	6.0	10,298	9,571	727	7.1
Midland	City	71,458	69,303	2,155	3.0	72,169	69,827	2,342	3.2	69,294	66,631	2,663	3.8
Odessa	City	60,817	58,616	2,201	3.6	61,350	59,005	2,345	3.8	58,333	55,531	2,802	4.8

Permian Basin Workforce Development Area*

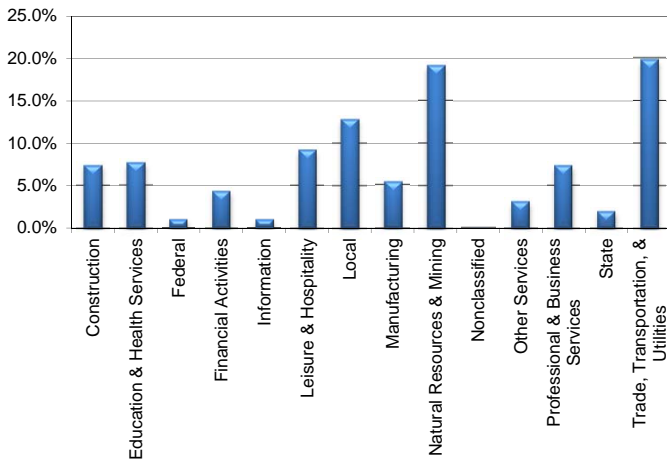
December 2012

Permian Basin WDA					Texas				
	CLF	Employed	Unemployed	Rate		CLF	Employed	Unemployed	Rate
Dec-12	236,852	227,988	8,864	3.7	Dec-12	12,621,561	11,858,711	762,850	6.0
Nov-12	238,005	229,262	8,743	3.7	Nov-12	12,628,725	11,891,358	737,367	5.8
Dec-11	231,268	220,728	10,540	4.6	Dec-11	12,493,959	11,606,912	887,047	7.1

Historical Unemployment Rates



Permian Basin WDA Industry Composition 2nd Quarter 2012



Total WDA Claims

Continued Claims for the Week of the 12th

	Dec-12	Nov-12	Dec-11	OTY
Continued	827	796	950	-123

Texas Unemployment Insurance Claims

Continued Claims for the Week of the 12th

	Dec-12	Nov-12	Dec-11	OTY
Continued	129,052	123,883	144,253	-15,201

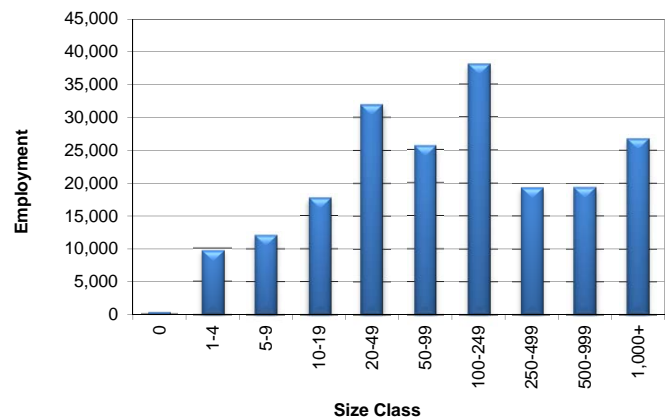
Permian Basin WDA Average Weekly Wage

	Permian Basin	Texas
2nd Quarter 2012	\$981.61	\$922.44
1st Quarter 2012	\$1,043.58	\$1,012.59
2nd Quarter 2011	\$905.52	\$899.44
Quarter Change	-\$61.97	-\$90.15
OTY Change	\$76.09	\$23.00

NAICS Covered Employment Quarterly Data 2nd Quarter 2012

SUPER SECTOR	Employment	Change	
		Quarter	Year
Construction	14,818	772	1,728
Education & Health Services	15,409	11	80
Federal	1,932	1	-71
Financial Activities	8,601	348	883
Information	1,902	-23	-132
Leisure & Hospitality	18,443	1,060	523
Local	25,825	-74	-1,000
Manufacturing	10,821	407	1,413
Natural Resources & Mining	38,490	1,998	6,054
Nonclassified	76	51	18
Other Services	6,254	265	219
Professional & Business Services	14,770	473	1,140
State	4,002	36	-184
Trade, Transportation, & Utilities	39,933	1,098	3,496
TOTAL	201,276	6,423	14,167

Size Class Employment Composition 2nd Quarter 2012



*Counties in WDA: Andrews, Borden, Crane, Dawson, Ector, Gaines, Glasscock, Howard, Loving, Martin, Midland, Pecos, Reeves, Terrell, Upton, Ward, & Winkler

Area	Area Type	Latest Month				Month Ago				Year Ago			
		December				November				December			
		2012				2012				2011			
		Labor Force	Employment	Unemployment	Rate	Labor Force	Employment	Unemployment	Rate	Labor Force	Employment	Unemployment	Rate
Texas	State	12,621,561	11,858,711	762,850	6.0	12,628,725	11,891,358	737,367	5.8	12,493,959	11,606,912	887,047	7.1
Midland	MSA	87,298	84,634	2,664	3.1	87,499	84,848	2,651	3.0	84,966	81,816	3,150	3.7
Odessa	MSA	82,565	79,511	3,054	3.7	83,163	80,133	3,030	3.6	80,475	76,756	3,719	4.6
Permian Basin	WDA	236,852	227,988	8,864	3.7	238,005	229,262	8,743	3.7	231,268	220,728	10,540	4.6
Andrews	County	8,638	8,340	298	3.4	8,644	8,359	285	3.3	7,824	7,499	325	4.2
Borden	County	643	624	19	3.0	624	607	17	2.7	600	579	21	3.5
Crane	County	1,892	1,811	81	4.3	1,908	1,824	84	4.4	1,767	1,661	106	6.0
Dawson	County	5,283	4,963	320	6.1	5,293	4,992	301	5.7	5,606	5,219	387	6.9
Ector	County	82,565	79,511	3,054	3.7	83,163	80,133	3,030	3.6	80,475	76,756	3,719	4.6
Gaines	County	8,043	7,723	320	4.0	7,966	7,656	310	3.9	7,646	7,280	366	4.8
Glasscock	County	669	646	23	3.4	669	645	24	3.6	707	678	29	4.1
Howard	County	14,262	13,497	765	5.4	14,380	13,630	750	5.2	14,152	13,268	884	6.2
Loving	County	41	37	4	9.8	41	37	4	9.8	41	37	4	9.8
Martin	County	2,495	2,403	92	3.7	2,500	2,410	90	3.6	2,535	2,420	115	4.5
Midland	County	87,298	84,634	2,664	3.1	87,499	84,848	2,651	3.0	84,966	81,816	3,150	3.7
Pecos	County	8,849	8,496	353	4.0	8,863	8,515	348	3.9	8,865	8,461	404	4.6
Reeves	County	4,426	4,037	389	8.8	4,442	4,067	375	8.4	4,734	4,262	472	10.0
Terrell	County	405	375	30	7.4	410	385	25	6.1	404	370	34	8.4
Upton	County	1,952	1,890	62	3.2	1,956	1,893	63	3.2	1,971	1,898	73	3.7
Ward	County	5,787	5,556	231	4.0	5,793	5,565	228	3.9	5,331	5,061	270	5.1
Winkler	County	3,604	3,445	159	4.4	3,854	3,696	158	4.1	3,644	3,463	181	5.0
Big Spring	City	10,343	9,757	586	5.7	10,432	9,853	579	5.6	10,301	9,591	710	6.9
Midland	City	71,346	69,183	2,163	3.0	71,512	69,358	2,154	3.0	69,466	66,880	2,586	3.7
Odessa	City	60,426	58,214	2,212	3.7	60,865	58,665	2,200	3.6	58,841	56,199	2,642	4.5