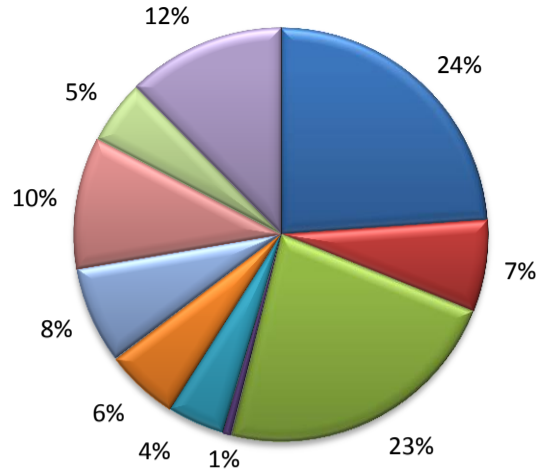


(Ector)

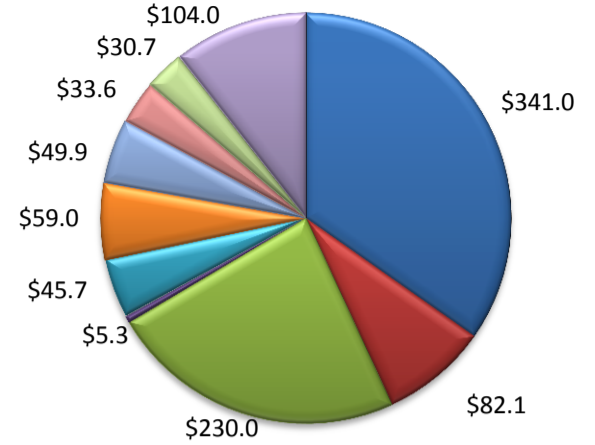
Industry Composition



- Mining, Logging, and Construction
- Manufacturing
- Trade, Transportation, and Utilities
- Information
- Financial Activities
- Professional and Business Services
- Education and Health Services
- Leisure and Hospitality
- Other Services
- Government

Wages by Industry (in millions)

3rd Quarter 2013



Employment by Industry

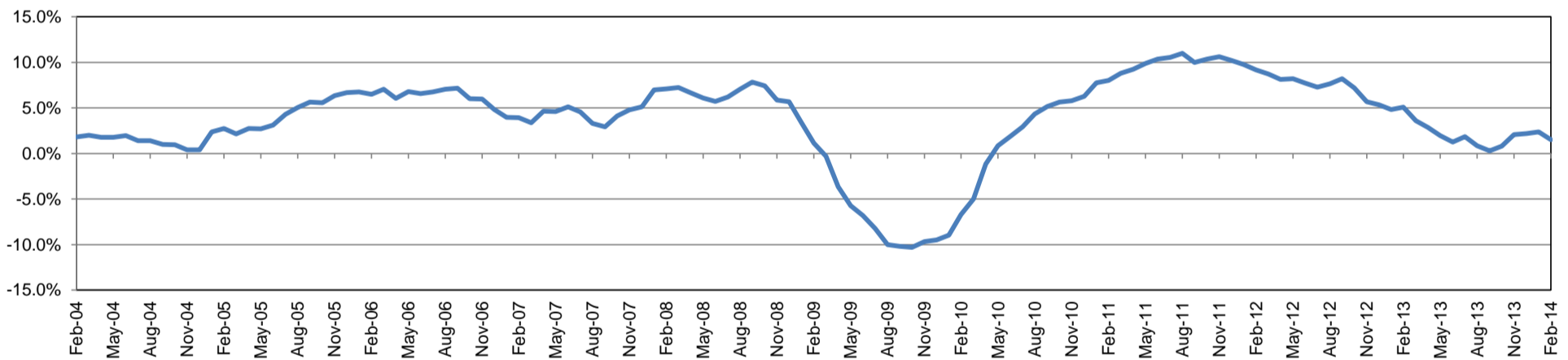
	Feb-14	Jan-14	Feb-13	Monthly Change		Annual Change	
				Actual	%	Actual	%
Total Nonfarm	73,700	73,500	72,600	200	0.3%	1,100	1.5%
Mining, Logging, and Construction	17,600	17,500	17,400	100	0.6%	200	1.2%
Manufacturing	5,300	5,300	5,400	0	0.0%	-100	-1.9%
Trade, Transportation, and Utilities	16,800	16,900	16,100	-100	-0.6%	700	4.4%
Information	500	500	500	0	0.0%	0	0.0%
Financial Activities	3,300	3,300	3,100	0	0.0%	200	6.5%
Professional and Business Services	4,200	4,200	4,300	0	0.0%	-100	-2.3%
Education and Health Services	5,600	5,500	5,700	100	1.8%	-100	-1.8%
Leisure and Hospitality	7,600	7,400	7,100	200	2.7%	500	7.0%
Other Services	3,700	3,800	3,600	-100	-2.6%	100	2.8%
Government	9,100	9,100	9,400	0	0.0%	-300	-3.2%

Industry Size Class

September 2013

Size Class	Employees per firm	Number of Firms	Employment in Size Class	% Total Employment
9	1000+	6	10,375	14.4%
8	500-999	6	3,996	5.5%
7	250-499	23	7,283	10.1%
6	100-249	89	12,704	17.6%
5	50-99	151	10,460	14.5%
4	20-49	429	13,156	18.2%
3	10-19	539	7,365	10.2%
2	5-9	637	4,208	5.8%
1	1-4	1,199	2,627	3.6%
0	0	204	0	0.0%
Total		3,283	72,174	100.0%

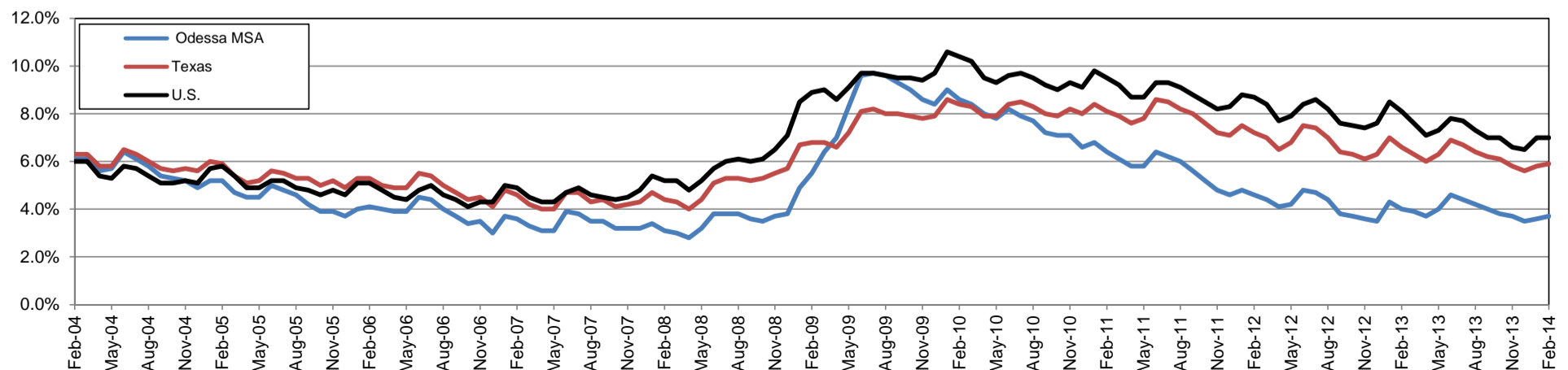
Annual Growth Rate for Total Nonagricultural Employment



Unemployment Information (all estimates in thousands)

	Odessa MSA				Texas (Actual)				United States (Actual)			
	C.L.F.	Emp.	Unemp.	Rate	C.L.F.	Emp.	Unemp.	Rate	C.L.F.	Emp.	Unemp.	Rate
Feb-14	85.7	82.5	3.2	3.7	12,907.1	12,150.6	756.5	5.9	155,027.0	144,134.0	10,893.0	7.0
Jan-14	85.5	82.4	3.1	3.6	12,818.5	12,074.9	743.6	5.8	154,381.0	143,526.0	10,855.0	7.0
Feb-13	84.4	81.0	3.4	4.0	12,713.0	11,875.1	837.9	6.6	154,727.0	142,228.0	12,500.0	8.1

Historical Unemployment Rates



2-2014 -- ODESSA CES

Area Title	NAICS Industry	Feb-14	Jan-14	Feb-13	Monthly Change	Monthly %	Yearly Change	Yearly %
Odessa	Total Nonfarm	73,700	73,500	72,600	200	0.3%	1,100	1.5%
Odessa	Total Private	64,600	64,400	63,200	200	0.3%	1,400	2.2%
Odessa	Goods Producing	22,900	22,800	22,800	100	0.4%	100	0.4%
Odessa	.Mining, Logging, and Construction	17,600	17,500	17,400	100	0.6%	200	1.1%
Odessa	.Manufacturing	5,300	5,300	5,400	0	0.0%	-100	-1.9%
Odessa	Service Providing	50,800	50,700	49,800	100	0.2%	1,000	2.0%
Odessa	.Private Service Providing	41,700	41,600	40,400	100	0.2%	1,300	3.2%
Odessa	..Trade, Transportation, and Utilities	16,800	16,900	16,100	-100	-0.6%	700	4.3%
Odessa	...Wholesale Trade	6,200	6,200	6,100	0	0.0%	100	1.6%
Odessa	...Retail Trade	7,800	7,800	7,300	0	0.0%	500	6.8%
Odessa	...Transportation, Warehousing, and Utilities	2,800	2,900	2,700	-100	-3.4%	100	3.7%
Odessa	..Information	500	500	500	0	0.0%	0	0.0%
Odessa	..Financial Activities	3,300	3,300	3,100	0	0.0%	200	6.5%
Odessa	..Professional and Business Services	4,200	4,200	4,300	0	0.0%	-100	-2.3%
Odessa	..Educational and Health Services	5,600	5,500	5,700	100	1.8%	-100	-1.8%
Odessa	..Leisure and Hospitality	7,600	7,400	7,100	200	2.7%	500	7.0%
Odessa	..Other Services	3,700	3,800	3,600	-100	-2.6%	100	2.8%
Odessa	Government	9,100	9,100	9,400	0	0.0%	-300	-3.2%
Odessa	.Federal Government	100	100	200	0	0.0%	-100	-50.0%
Odessa	.State Government	1,400	1,400	1,400	0	0.0%	0	0.0%
Odessa	.Local Government	7,600	7,600	7,800	0	0.0%	-200	-2.6%