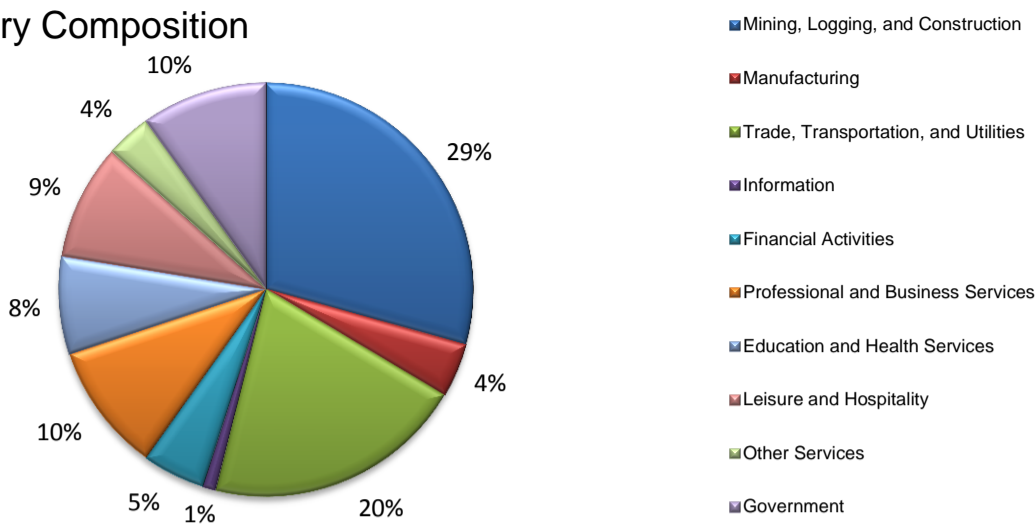
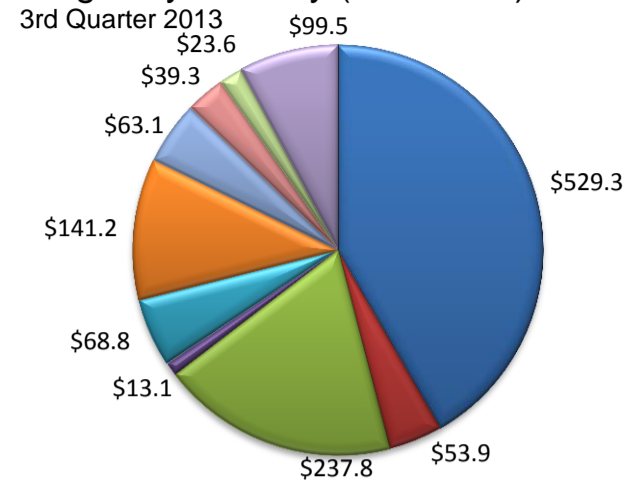


(Midland)

Industry Composition



Wages by Industry (in millions)



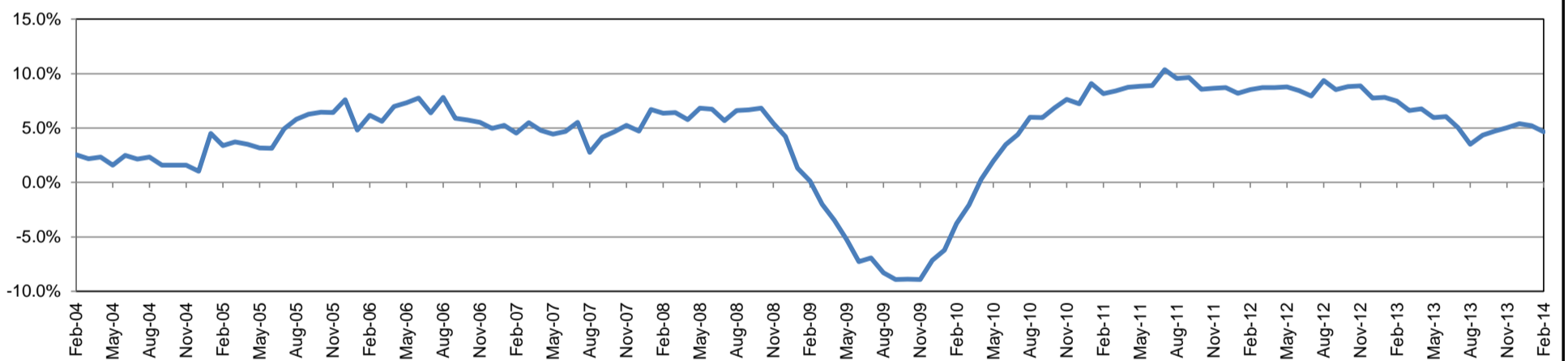
Employment by Industry

	Feb-14	Jan-14	Feb-13	Monthly Change		Annual Change	
				Actual	%	Actual	%
Total Nonfarm	87,400	87,000	83,500	400	0.5%	3,900	4.7%
Mining, Logging, and Construction	25,600	25,200	23,200	400	1.6%	2,400	10.3%
Manufacturing	3,700	3,700	3,600	0	0.0%	100	2.8%
Trade, Transportation, and Utilities	17,800	18,000	16,800	-200	-1.1%	1,000	6.0%
Information	900	900	1,000	0	0.0%	-100	-10.0%
Financial Activities	4,300	4,300	4,100	0	0.0%	200	4.9%
Professional and Business Services	8,800	8,700	8,800	100	1.2%	0	0.0%
Education and Health Services	6,700	6,700	6,900	0	0.0%	-200	-2.9%
Leisure and Hospitality	7,900	7,800	7,600	100	1.3%	300	4.0%
Other Services	3,100	3,100	3,000	0	0.0%	100	3.3%
Government	8,600	8,600	8,500	0	0.0%	100	1.2%

Industry Size Class September 2013

Size Class	Employees per firm	Number of Firms	Employment in Size Class	% Total Employment
9	1000+	4	6,839	8.0%
8	500-999	13	9,042	10.6%
7	250-499	15	4,832	5.7%
6	100-249	110	17,339	20.3%
5	50-99	221	15,250	17.9%
4	20-49	496	15,195	17.8%
3	10-19	540	7,366	8.6%
2	5-9	798	5,270	6.2%
1	1-4	2,073	4,278	5.0%
0	0	349	0	0.0%
Total		4,619	85,411	100.0%

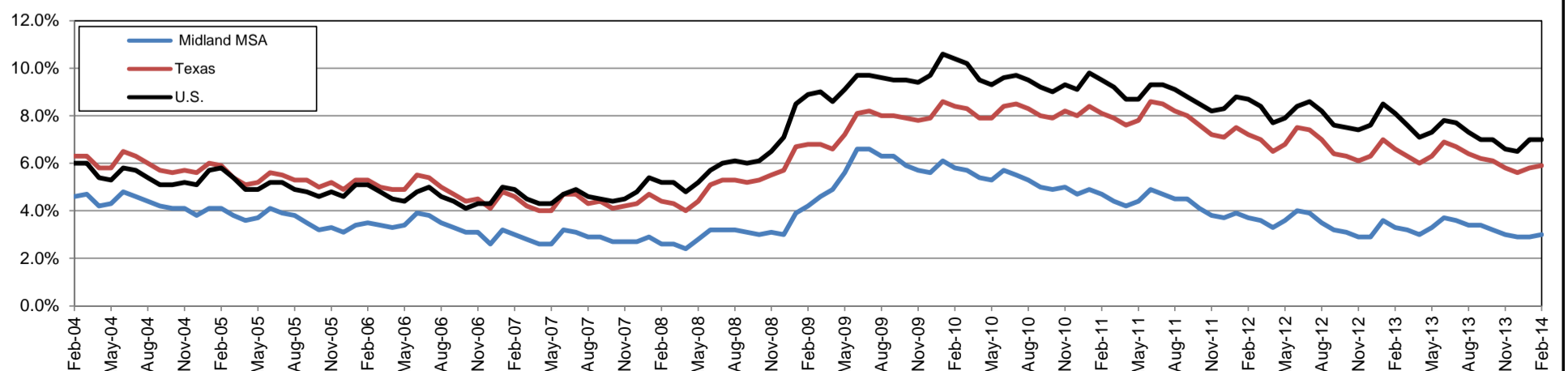
Annual Growth Rate for Total Nonagricultural Employment



Unemployment Information (all estimates in thousands)

	Midland MSA				Texas (Actual)				United States (Actual)			
	C.L.F.	Emp.	Unemp.	Rate	C.L.F.	Emp.	Unemp.	Rate	C.L.F.	Emp.	Unemp.	Rate
Feb-14	96.2	93.3	2.9	3.0	12,907.1	12,150.6	756.5	5.9	155,027.0	144,134.0	10,893.0	7.0
Jan-14	95.6	92.8	2.8	2.9	12,818.5	12,074.9	743.6	5.8	154,381.0	143,526.0	10,855.0	7.0
Feb-13	93.2	90.1	3.1	3.3	12,713.0	11,875.1	837.9	6.6	154,727.0	142,228.0	12,500.0	8.1

Historical Unemployment Rates



2-2014 -- MIDLAND CES

Area Title	NAICS Industry	Feb-14	Jan-14	Feb-13	Monthly Change	Monthly %	Yearly Change	Yearly %
Midland	Total Nonfarm	87,400	87,000	83,500	400	0.5%	3,900	4.7%
Midland	Total Private	78,800	78,400	75,000	400	0.5%	3,800	5.1%
Midland	Goods Producing	29,300	28,900	26,800	400	1.4%	2,500	9.3%
Midland	.Mining, Logging, and Construction	25,600	25,200	23,200	400	1.6%	2,400	10.3%
Midland	.Manufacturing	3,700	3,700	3,600	0	0.0%	100	2.8%
Midland	Service Providing	58,100	58,100	56,700	0	0.0%	1,400	2.5%
Midland	.Private Service Providing	49,500	49,500	48,200	0	0.0%	1,300	2.7%
Midland	..Trade, Transportation, and Utilities	17,800	18,000	16,800	-200	-1.1%	1,000	6.0%
Midland	...Wholesale Trade	5,000	5,000	4,700	0	0.0%	300	6.4%
Midland	...Retail Trade	8,400	8,500	7,900	-100	-1.2%	500	6.3%
Midland	...Transportation, Warehousing, and Utilities	4,400	4,500	4,200	-100	-2.2%	200	4.8%
Midland	..Information	900	900	1,000	0	0.0%	-100	-10.0%
Midland	..Financial Activities	4,300	4,300	4,100	0	0.0%	200	4.9%
Midland	..Professional and Business Services	8,800	8,700	8,800	100	1.1%	0	0.0%
Midland	..Educational and Health Services	6,700	6,700	6,900	0	0.0%	-200	-2.9%
Midland	..Leisure and Hospitality	7,900	7,800	7,600	100	1.3%	300	3.9%
Midland	..Other Services	3,100	3,100	3,000	0	0.0%	100	3.3%
Midland	Government	8,600	8,600	8,500	0	0.0%	100	1.2%
Midland	.Federal Government	500	500	500	0	0.0%	0	0.0%
Midland	.State Government	500	500	500	0	0.0%	0	0.0%
Midland	.Local Government	7,600	7,600	7,500	0	0.0%	100	1.3%