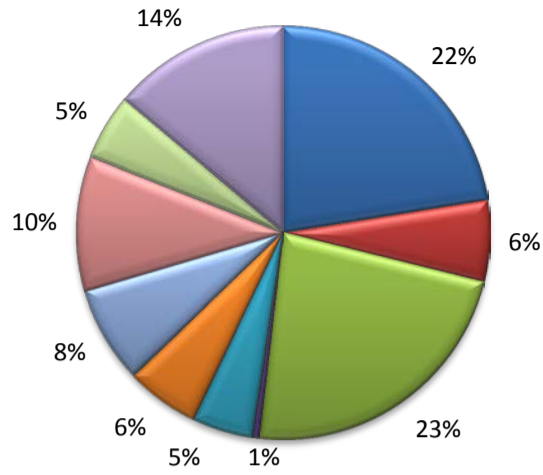


(Ector)

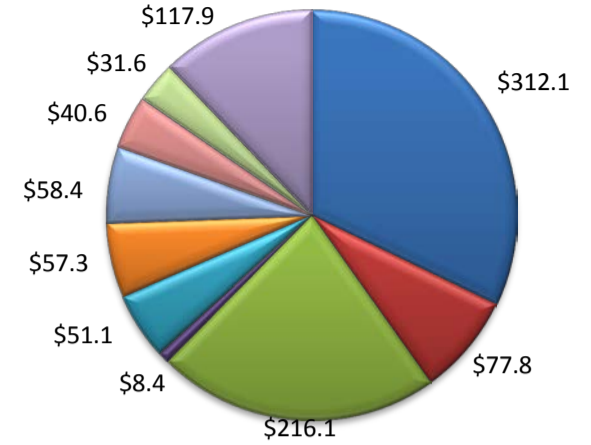
Industry Composition



- Mining, Logging, and Construction
- Manufacturing
- Trade, Transportation, and Utilities
- Information
- Financial Activities
- Professional and Business Services
- Education and Health Services
- Leisure and Hospitality
- Other Services
- Government

Wages by Industry (in millions)

3rd Quarter 2015



Employment by Industry

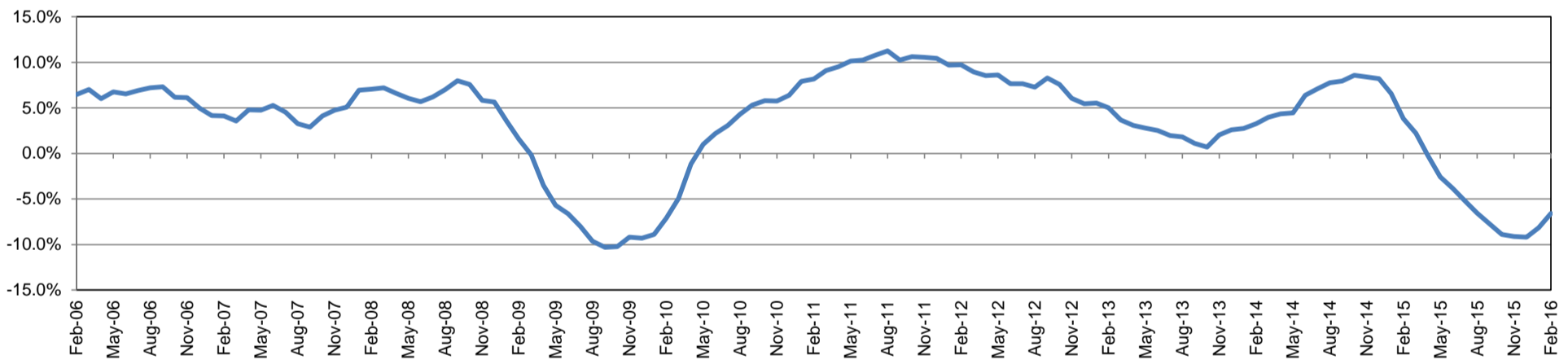
	Feb-16	Jan-16	Feb-15	Monthly Change		Annual Change	
				Actual	%	Actual	%
Total Nonfarm	73,500	73,200	78,700	300	0.4%	-5,200	-6.6%
Mining, Logging, and Construction	16,500	16,500	19,500	0	0.0%	-3,000	-15.4%
Manufacturing	4,700	4,800	5,600	-100	-2.1%	-900	-16.1%
Trade, Transportation, and Utilities	16,900	17,000	18,200	-100	-0.6%	-1,300	-7.1%
Information	400	400	400	0	0.0%	0	0.0%
Financial Activities	3,500	3,500	3,700	0	0.0%	-200	-5.4%
Professional and Business Services	4,200	4,300	4,400	-100	-2.3%	-200	-4.6%
Education and Health Services	5,600	5,400	5,500	200	3.7%	100	1.8%
Leisure and Hospitality	7,700	7,600	7,800	100	1.3%	-100	-1.3%
Other Services	3,800	3,700	3,800	100	2.7%	0	0.0%
Government	10,200	10,000	9,800	200	2.0%	400	4.1%

Industry Size Class

September 2015

Size Class	Employees per firm	Number of Firms	Employment in Size Class	% Total Employment
9	1000+	5	10,646	14.8%
8	500-999	7	5,156	7.2%
7	250-499	18	6,139	8.5%
6	100-249	84	11,971	16.6%
5	50-99	149	10,319	14.3%
4	20-49	430	13,204	18.3%
3	10-19	552	7,512	10.4%
2	5-9	642	4,251	5.9%
1	1-4	1,275	2,823	3.9%
0	0	329	0	0.0%
Total		3,491	72,021	100.0%

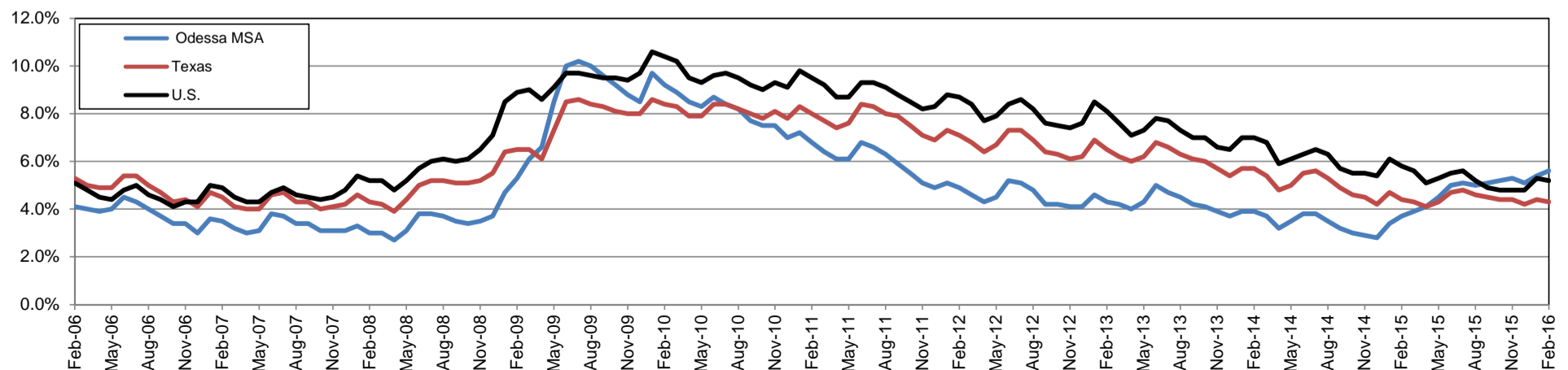
Annual Growth Rate for Total Nonagricultural Employment



Unemployment Information (all estimates in thousands)

	Odessa MSA				Texas (Actual)				United States (Actual)			
	C.L.F.	Emp.	Unemp.	Rate	C.L.F.	Emp.	Unemp.	Rate	C.L.F.	Emp.	Unemp.	Rate
Feb-16	78.9	74.5	4.4	5.6	13,221.7	12,654.9	566.8	4.3	158,279.0	150,060.0	8,219.0	5.2
Jan-16	78.4	74.2	4.2	5.4	13,113.5	12,531.9	581.5	4.4	157,347.0	149,037.0	8,309.0	5.3
Feb-15	82.3	79.2	3.1	3.7	13,001.4	12,423.2	578.2	4.4	156,213.0	147,118.0	9,095.0	5.8

Historical Unemployment Rates

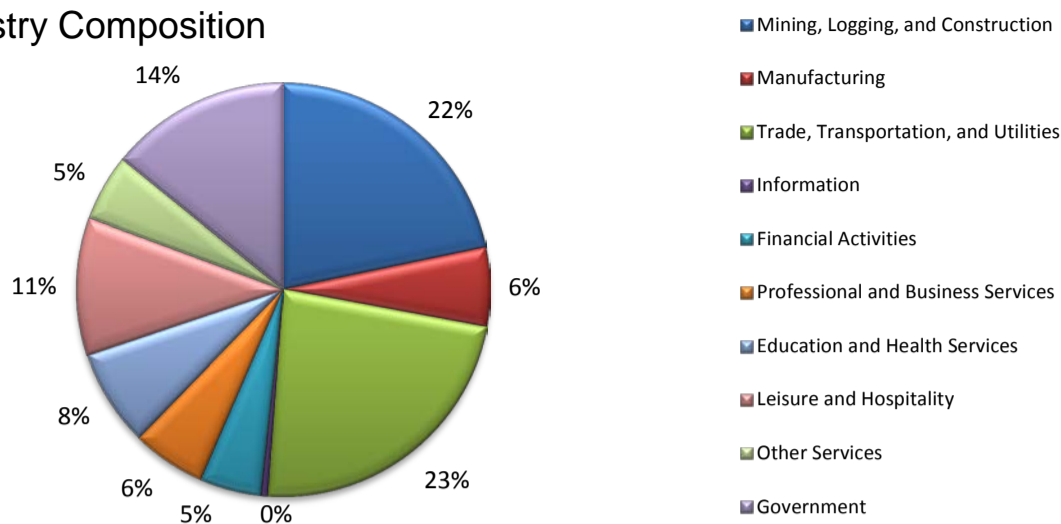


## ODESSA CES

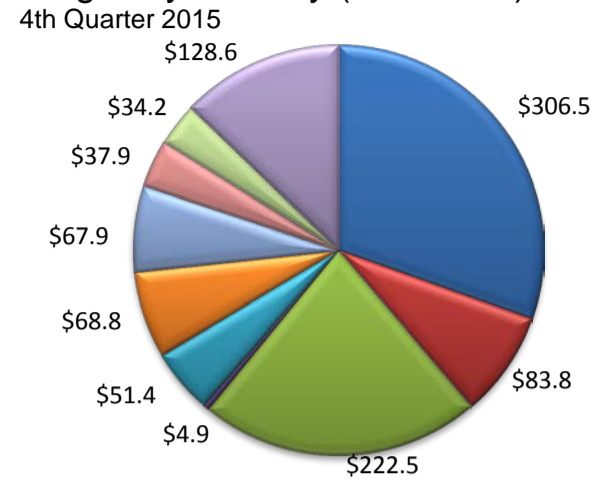
Area Title	NAICS Industry	Feb-16	Jan-16	Feb-15	Monthly Change	Monthly %	Yearly Change	Yearly %
Odessa	Total Nonfarm	73,500	73,200	78,700	300	0.4%	-5,200	-6.6%
Odessa	Total Private	63,300	63,200	68,900	100	0.2%	-5,600	-8.1%
Odessa	Goods Producing	21,200	21,300	25,100	-100	-0.5%	-3,900	-15.5%
Odessa	.Mining, Logging, and Construction	16,500	16,500	19,500	0	0.0%	-3,000	-15.4%
Odessa	.Manufacturing	4,700	4,800	5,600	-100	-2.1%	-900	-16.1%
Odessa	Service Providing	52,300	51,900	53,600	400	0.8%	-1,300	-2.4%
Odessa	.Private Service Providing	42,100	41,900	43,800	200	0.5%	-1,700	-3.9%
Odessa	..Trade, Transportation, and Utilities	16,900	17,000	18,200	-100	-0.6%	-1,300	-7.1%
Odessa	...Wholesale Trade	5,700	5,800	6,600	-100	-1.7%	-900	-13.6%
Odessa	...Retail Trade	8,300	8,300	8,300	0	0.0%	0	0.0%
Odessa	...Transportation, Warehousing, and Utilities	2,900	2,900	3,300	0	0.0%	-400	-12.1%
Odessa	..Information	400	400	400	0	0.0%	0	0.0%
Odessa	..Financial Activities	3,500	3,500	3,700	0	0.0%	-200	-5.4%
Odessa	..Professional and Business Services	4,200	4,300	4,400	-100	-2.3%	-200	-4.5%
Odessa	..Educational and Health Services	5,600	5,400	5,500	200	3.7%	100	1.8%
Odessa	..Leisure and Hospitality	7,700	7,600	7,800	100	1.3%	-100	-1.3%
Odessa	..Other Services	3,800	3,700	3,800	100	2.7%	0	0.0%
Odessa	Government	10,200	10,000	9,800	200	2.0%	400	4.1%
Odessa	.Federal Government	200	200	200	0	0.0%	0	0.0%
Odessa	.State Government	1,400	1,300	1,400	100	7.7%	0	0.0%
Odessa	.Local Government	8,600	8,500	8,200	100	1.2%	400	4.9%

(Ector)

Industry Composition



Wages by Industry (in millions)



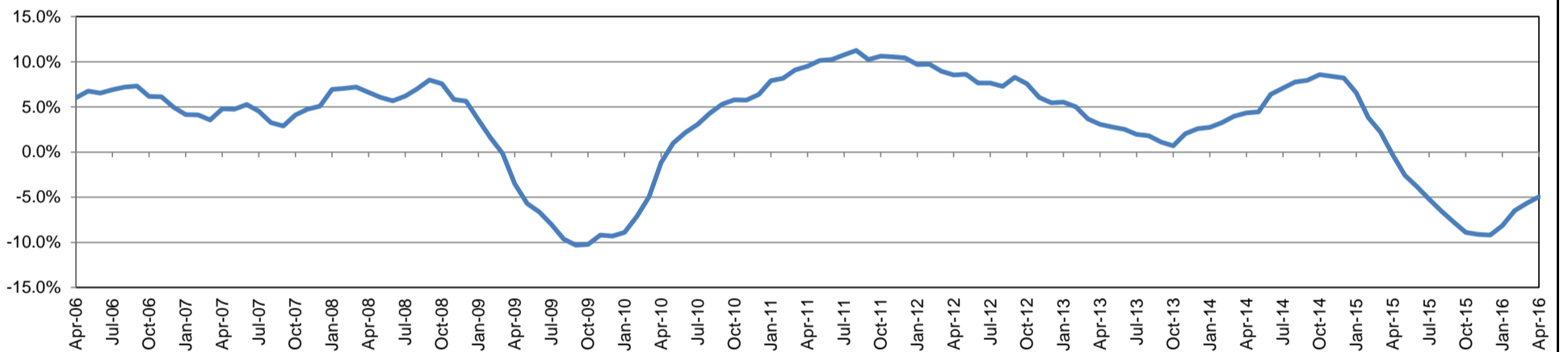
Employment by Industry

	Apr-16	Mar-16	Apr-15	Monthly Change		Annual Change	
				Actual	%	Actual	%
Total Nonfarm	72,700	73,500	76,500	-800	-1.1%	-3,800	-5.0%
Mining, Logging, and Construction	15,800	16,300	17,700	-500	-3.1%	-1,900	-10.7%
Manufacturing	4,500	4,700	5,400	-200	-4.3%	-900	-16.7%
Trade, Transportation, and Utilities	16,900	17,100	17,900	-200	-1.2%	-1,000	-5.6%
Information	400	400	400	0	0.0%	0	0.0%
Financial Activities	3,500	3,500	3,600	0	0.0%	-100	-2.8%
Professional and Business Services	4,200	4,300	4,200	-100	-2.3%	0	0.0%
Education and Health Services	5,500	5,500	5,500	0	0.0%	0	0.0%
Leisure and Hospitality	7,800	7,800	8,100	0	0.0%	-300	-3.7%
Other Services	3,800	3,700	3,800	100	2.7%	0	0.0%
Government	10,300	10,200	9,900	100	1.0%	400	4.0%

Industry Size Class December 2015

Size Class	Employees per firm	Number of Firms	Employment in Size Class	% Total Employment
9	1000+	4	9,553	13.5%
8	500-999	9	6,799	9.6%
7	250-499	18	5,876	8.3%
6	100-249	76	10,972	15.5%
5	50-99	146	10,070	14.3%
4	20-49	423	12,922	18.3%
3	10-19	536	7,327	10.4%
2	5-9	645	4,277	6.1%
1	1-4	1,278	2,808	4.0%
0	0	335	0	0.0%
Total		3,470	70,604	100.0%

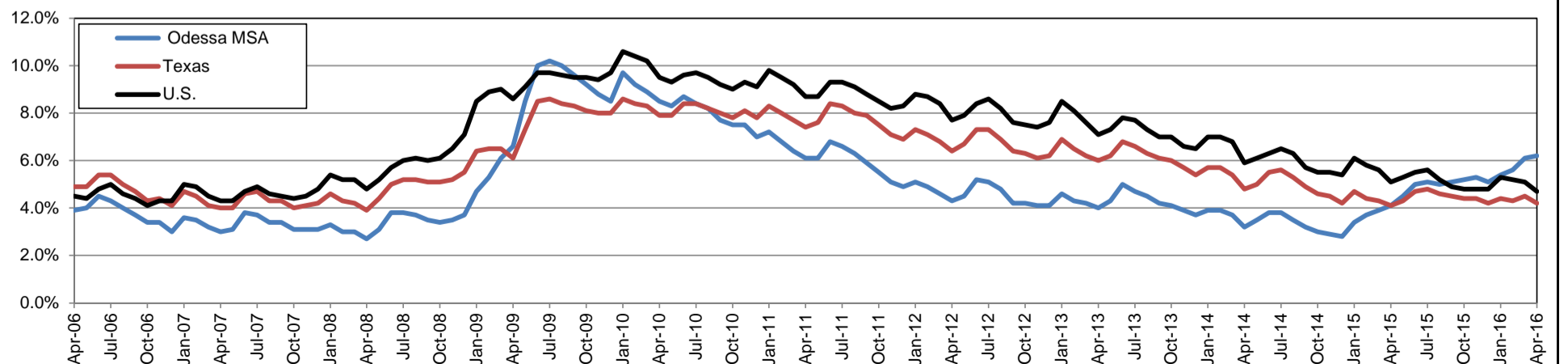
Annual Growth Rate for Total Nonagricultural Employment



Unemployment Information (all estimates in thousands)

	Odessa MSA				Texas (Actual)				United States (Actual)			
	C.L.F.	Emp.	Unemp.	Rate	C.L.F.	Emp.	Unemp.	Rate	C.L.F.	Emp.	Unemp.	Rate
Apr-16	78.7	73.7	4.9	6.2	13,257.5	12,696.8	560.7	4.2	158,488.0	151,075.0	7,413.0	4.7
Mar-16	79.3	74.5	4.8	6.1	13,273.3	12,682.3	591.0	4.5	158,854.0	150,738.0	8,116.0	5.1
Apr-15	80.7	77.4	3.3	4.1	13,054.1	12,524.8	529.4	4.1	156,554.0	148,587.0	7,966.0	5.1

Historical Unemployment Rates



## ODESSA CES

Area Title	NAICS Industry	Apr-16	Mar-16	Apr-15	Monthly Change	Monthly %	Yearly Change	Yearly %
Odessa	Total Nonfarm	72,700	73,500	76,500	-800	-1.1%	-3,800	-5.0%
Odessa	Total Private	62,400	63,300	66,600	-900	-1.4%	-4,200	-6.3%
Odessa	Goods Producing	20,300	21,000	23,100	-700	-3.3%	-2,800	-12.1%
Odessa	.Mining, Logging, and Construction	15,800	16,300	17,700	-500	-3.1%	-1,900	-10.7%
Odessa	.Manufacturing	4,500	4,700	5,400	-200	-4.3%	-900	-16.7%
Odessa	Service Providing	52,400	52,500	53,400	-100	-0.2%	-1,000	-1.9%
Odessa	.Private Service Providing	42,100	42,300	43,500	-200	-0.5%	-1,400	-3.2%
Odessa	..Trade, Transportation, and Utilities	16,900	17,100	17,900	-200	-1.2%	-1,000	-5.6%
Odessa	...Wholesale Trade	5,700	5,800	6,400	-100	-1.7%	-700	-10.9%
Odessa	...Retail Trade	8,400	8,400	8,300	0	0.0%	100	1.2%
Odessa	...Transportation, Warehousing, and Utilities	2,800	2,900	3,200	-100	-3.4%	-400	-12.5%
Odessa	..Information	400	400	400	0	0.0%	0	0.0%
Odessa	..Financial Activities	3,500	3,500	3,600	0	0.0%	-100	-2.8%
Odessa	..Professional and Business Services	4,200	4,300	4,200	-100	-2.3%	0	0.0%
Odessa	..Educational and Health Services	5,500	5,500	5,500	0	0.0%	0	0.0%
Odessa	..Leisure and Hospitality	7,800	7,800	8,100	0	0.0%	-300	-3.7%
Odessa	..Other Services	3,800	3,700	3,800	100	2.7%	0	0.0%
Odessa	Government	10,300	10,200	9,900	100	1.0%	400	4.0%
Odessa	.Federal Government	200	200	200	0	0.0%	0	0.0%
Odessa	.State Government	1,400	1,400	1,400	0	0.0%	0	0.0%
Odessa	.Local Government	8,700	8,600	8,300	100	1.2%	400	4.8%