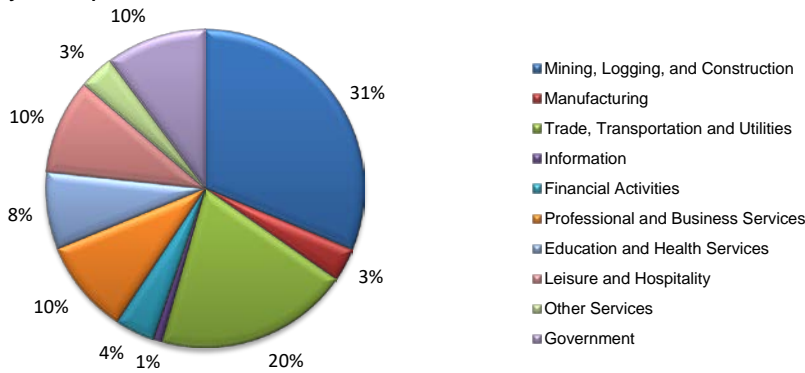
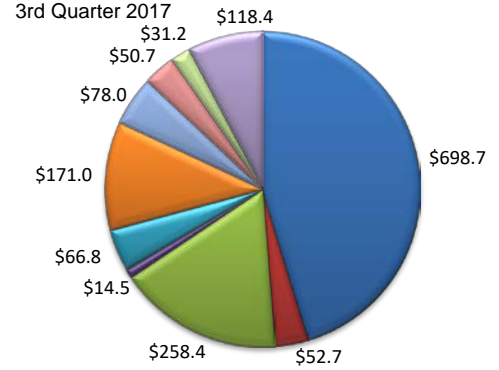


(Martin, Midland)

Industry Composition



Wages by Industry (in millions)



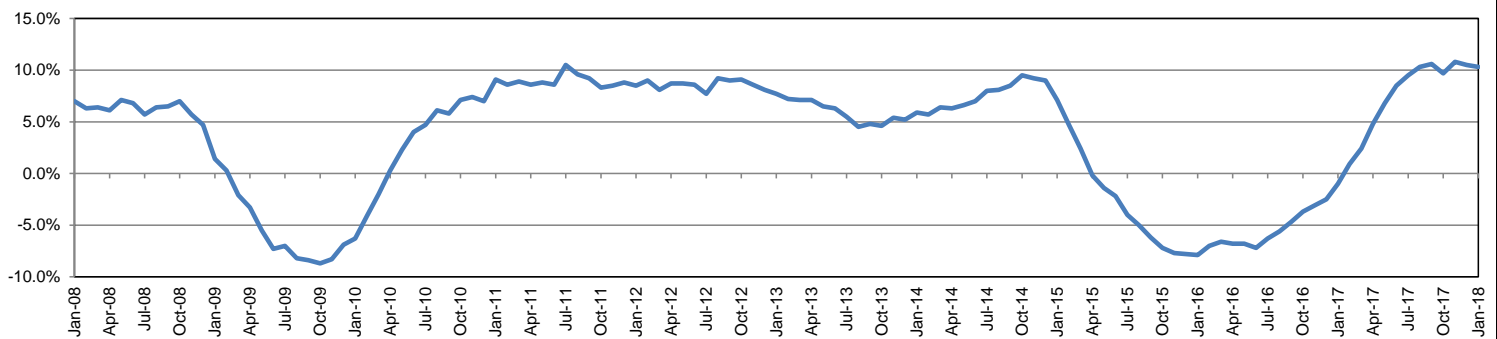
Employment by Industry

	Jan-18	Dec-17	Jan-17	Monthly Change		Annual Change	
				Actual	%	Actual	%
Total Nonfarm	97,300	97,800	88,200	-500	-0.5%	9,100	10.3%
Mining, Logging and Construction	30,400	30,000	24,500	400	1.3%	5,900	24.1%
Manufacturing	3,300	3,300	3,000	0	0.0%	300	10.0%
Trade, Transportation, and Utilities	19,200	19,600	18,200	-400	-2.0%	1,000	5.5%
Information	900	1,000	900	-100	-10.0%	0	0.0%
Financial Activities	3,900	4,000	3,600	-100	-2.5%	300	8.3%
Professional and Business Services	9,300	9,300	8,800	0	0.0%	500	5.7%
Education and Health Services	7,600	7,600	7,400	0	0.0%	200	2.7%
Leisure and Hospitality	9,400	9,600	8,600	-200	-2.1%	800	9.3%
Other Services	3,400	3,400	3,200	0	0.0%	200	6.3%
Government	9,900	10,000	10,000	-100	-1.0%	-100	-1.0%

Industry Size Class

Size Class	Employees per firm	Number of Firms	September 2017	
			Employment in Size Class	% Total Employment
9	1000+	5	8,126	8.7%
8	500-999	14	9,766	10.4%
7	250-499	23	7,614	8.1%
6	100-249	117	17,696	18.9%
5	50-99	216	15,170	16.2%
4	20-49	563	16,843	18.0%
3	10-19	588	8,084	8.6%
2	5-9	862	5,694	6.1%
1	1-4	2,189	4,475	4.8%
0	0	524	0	0.0%
Total		5,101	93,468	100.0%

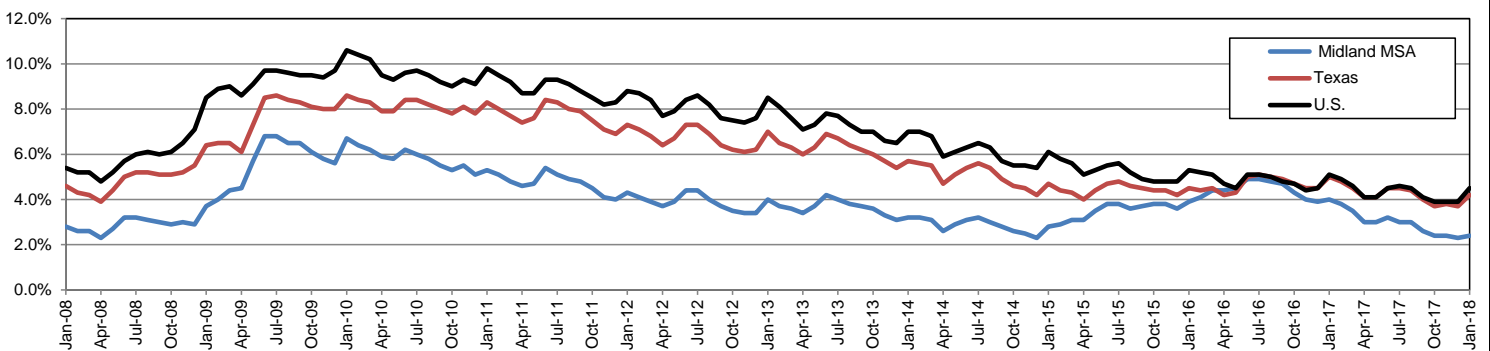
Annual Growth Rate for Total Nonagricultural Employment



Unemployment Information (all estimates in thousands)

	Midland MSA				Texas (Actual)				United States (Actual)			
	C.L.F.	Emp.	Unemp.	Rate	C.L.F.	Emp.	Unemp.	Rate	C.L.F.	Emp.	Unemp.	Rate
Jan-18	95.6	93.3	2.3	2.4	13,622.1	13,054.1	568.0	4.2	160,037.0	152,848.0	7,189.0	4.5
Dec-17	94.7	92.6	2.1	2.3	13,598.1	13,096.2	501.8	3.7	159,880.0	153,602.0	6,278.0	3.9
Jan-17	88.4	84.8	3.6	4.0	13,417.3	12,749.0	668.4	5.0	158,676.0	150,527.0	8,149.0	5.1

Historical Unemployment Rates

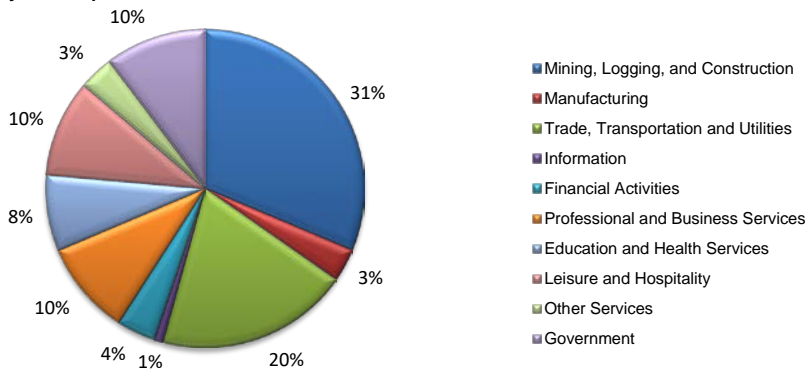


## MIDLAND CES

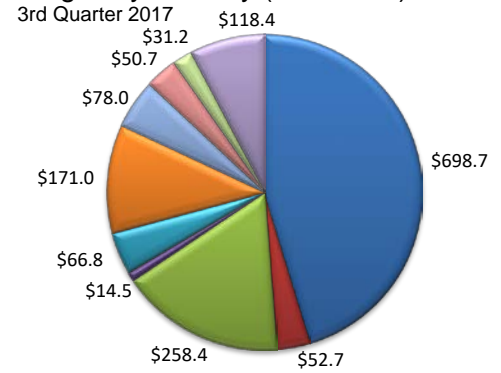
Area	Series Title	Jan-18	Dec-17	Jan-17	Monthly Change	Monthly %	Yearly Change	Yearly %
Midland	Total Nonfarm	97,300	97,800	88,200	-500	-0.5%	9,100	10.3%
Midland	.Total Private	87,400	87,800	78,200	-400	-0.5%	9,200	11.8%
Midland	.Goods Producing	33,700	33,300	27,500	400	1.2%	6,200	22.5%
Midland	..Mining, Logging and Construction	30,400	30,000	24,500	400	1.3%	5,900	24.1%
Midland	..Manufacturing	3,300	3,300	3,000	0	0.0%	300	10.0%
Midland	.Service-Providing	63,600	64,500	60,700	-900	-1.4%	2,900	4.8%
Midland	.Private Service Providing	53,700	54,500	50,700	-800	-1.5%	3,000	5.9%
Midland	..Trade, Transportation, and Utilities	19,200	19,600	18,200	-400	-2.0%	1,000	5.5%
Midland	...Wholesale Trade	6,000	6,000	5,100	0	0.0%	900	17.6%
Midland	...Retail Trade	9,300	9,600	9,200	-300	-3.1%	100	1.1%
Midland	...Transportation, Warehousing, and Utilities	3,900	4,000	3,900	-100	-2.5%	0	0.0%
Midland	..Information	900	1,000	900	-100	-10.0%	0	0.0%
Midland	..Financial Activities	3,900	4,000	3,600	-100	-2.5%	300	8.3%
Midland	..Professional and Business Services	9,300	9,300	8,800	0	0.0%	500	5.7%
Midland	..Education and Health Services	7,600	7,600	7,400	0	0.0%	200	2.7%
Midland	..Leisure and Hospitality	9,400	9,600	8,600	-200	-2.1%	800	9.3%
Midland	..Other Services	3,400	3,400	3,200	0	0.0%	200	6.3%
Midland	..Government	9,900	10,000	10,000	-100	-1.0%	-100	-1.0%
Midland	...Federal Government	500	600	600	-100	-16.7%	-100	-16.7%
Midland	...State Government	600	600	600	0	0.0%	0	0.0%
Midland	...Local Government	8,800	8,800	8,800	0	0.0%	0	0.0%

(Martin, Midland)

Industry Composition



Wages by Industry (in millions)



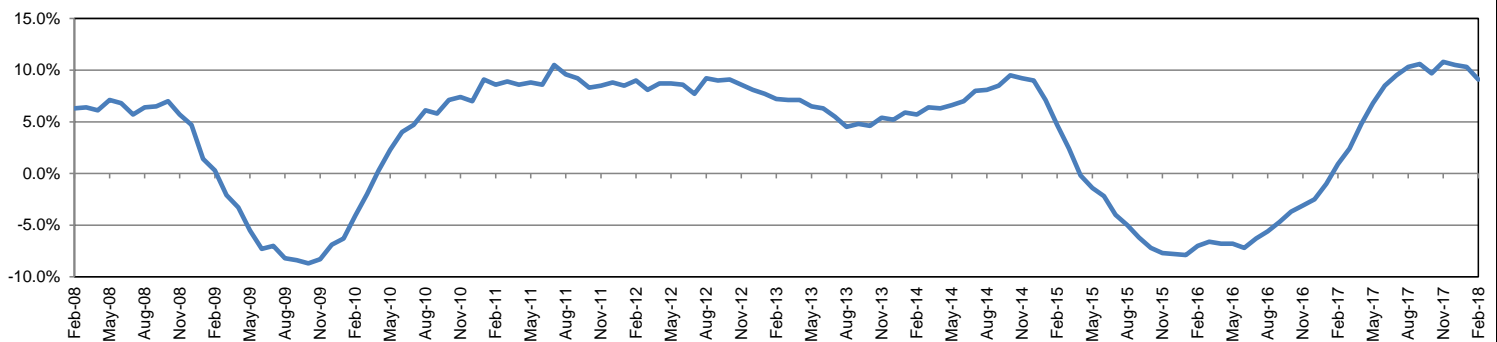
Employment by Industry

	Feb-18	Jan-18	Feb-17	Monthly Change		Annual Change	
				Actual	%	Actual	%
<b>Total Nonfarm</b>	<b>97,400</b>	<b>97,300</b>	<b>89,300</b>	<b>100</b>	<b>0.1%</b>	<b>8,100</b>	<b>9.1%</b>
Mining, Logging and Construction	30,500	30,300	25,100	200	0.7%	5,400	21.5%
Manufacturing	3,300	3,300	3,000	0	0.0%	300	10.0%
Trade, Transportation, and Utilities	19,000	19,200	18,100	-200	-1.0%	900	5.0%
Information	900	1,000	900	-100	-10.0%	0	0.0%
Financial Activities	3,900	3,900	3,600	0	0.0%	300	8.3%
Professional and Business Services	9,300	9,300	9,000	0	0.0%	300	3.3%
Education and Health Services	7,500	7,600	7,500	-100	-1.3%	0	0.0%
Leisure and Hospitality	9,600	9,400	8,800	200	2.1%	800	9.1%
Other Services	3,400	3,400	3,300	0	0.0%	100	3.0%
Government	10,000	9,900	10,000	100	1.0%	0	0.0%

Industry Size Class

Size Class	Employees per firm	Number of Firms	September 2017	
			Employment in Size Class	% Total Employment
9	1000+	5	8,126	8.7%
8	500-999	14	9,766	10.4%
7	250-499	23	7,614	8.1%
6	100-249	117	17,696	18.9%
5	50-99	216	15,170	16.2%
4	20-49	563	16,843	18.0%
3	10-19	588	8,084	8.6%
2	5-9	862	5,694	6.1%
1	1-4	2,189	4,475	4.8%
0	0	524	0	0.0%
<b>Total</b>		<b>5,101</b>	<b>93,468</b>	<b>100.0%</b>

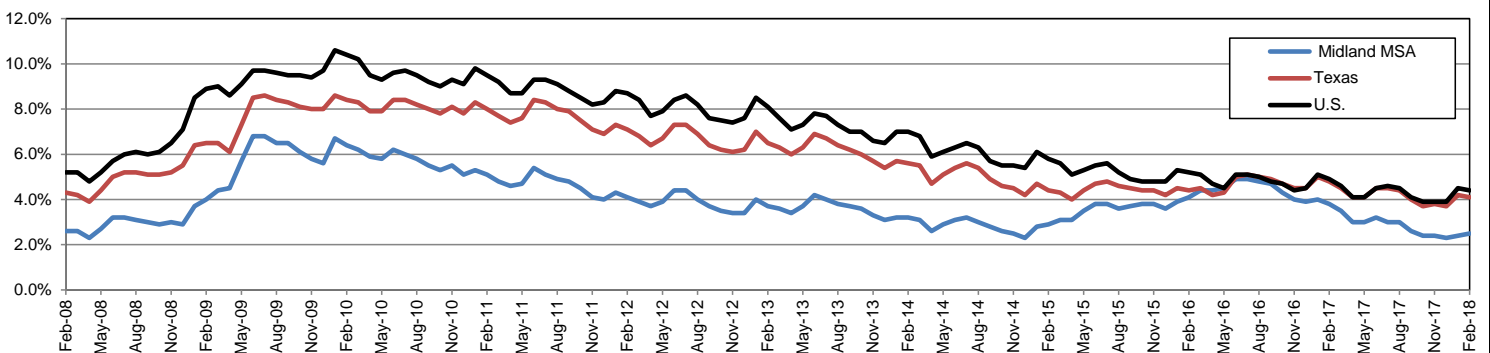
Annual Growth Rate for Total Nonagricultural Employment



Unemployment Information (all estimates in thousands)

	Midland MSA				Texas (Actual)				United States (Actual)			
	C.L.F.	Emp.	Unemp.	Rate	C.L.F.	Emp.	Unemp.	Rate	C.L.F.	Emp.	Unemp.	Rate
Feb-18	96.3	93.9	2.4	2.5	13,811.9	13,241.9	570.0	4.1	161,494.0	154,403.0	7,091.0	4.4
Jan-18	95.5	93.2	2.3	2.4	13,621.8	13,053.8	568.0	4.2	160,037.0	152,848.0	7,189.0	4.5
Feb-17	89.1	85.6	3.4	3.8	13,494.0	12,840.8	653.1	4.8	159,482.0	151,594.0	7,887.0	4.9

Historical Unemployment Rates

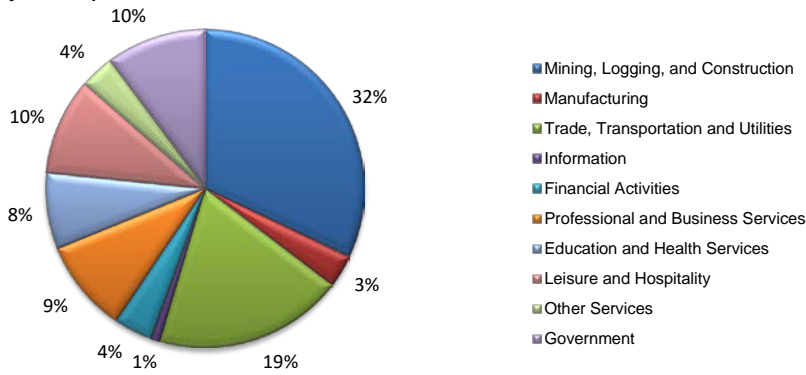


## MIDLAND CES

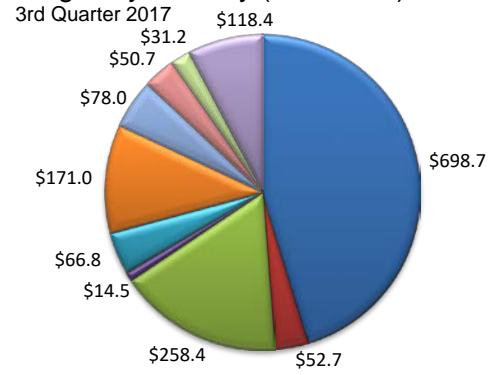
Area	Series Title	Feb-18	Jan-18	Feb-17	Monthly Change	Monthly %	Yearly Change	Yearly %
Midland	Total Nonfarm	97,400	97,300	89,300	100	0.1%	8,100	9.1%
Midland	.Total Private	87,400	87,400	79,300	0	0.0%	8,100	10.2%
Midland	.Goods Producing	33,800	33,600	28,100	200	0.6%	5,700	20.3%
Midland	..Mining, Logging and Construction	30,500	30,300	25,100	200	0.7%	5,400	21.5%
Midland	..Manufacturing	3,300	3,300	3,000	0	0.0%	300	10.0%
Midland	.Service-Providing	63,600	63,700	61,200	-100	-0.2%	2,400	3.9%
Midland	.Private Service Providing	53,600	53,800	51,200	-200	-0.4%	2,400	4.7%
Midland	..Trade, Transportation, and Utilities	19,000	19,200	18,100	-200	-1.0%	900	5.0%
Midland	...Wholesale Trade	6,000	6,000	5,200	0	0.0%	800	15.4%
Midland	...Retail Trade	9,100	9,300	9,000	-200	-2.2%	100	1.1%
Midland	...Transportation, Warehousing, and Utilities	3,900	3,900	3,900	0	0.0%	0	0.0%
Midland	..Information	900	1,000	900	-100	-10.0%	0	0.0%
Midland	..Financial Activities	3,900	3,900	3,600	0	0.0%	300	8.3%
Midland	..Professional and Business Services	9,300	9,300	9,000	0	0.0%	300	3.3%
Midland	..Education and Health Services	7,500	7,600	7,500	-100	-1.3%	0	0.0%
Midland	..Leisure and Hospitality	9,600	9,400	8,800	200	2.1%	800	9.1%
Midland	..Other Services	3,400	3,400	3,300	0	0.0%	100	3.0%
Midland	..Government	10,000	9,900	10,000	100	1.0%	0	0.0%
Midland	...Federal Government	600	500	600	100	20.0%	0	0.0%
Midland	...State Government	600	600	600	0	0.0%	0	0.0%
Midland	...Local Government	8,800	8,800	8,800	0	0.0%	0	0.0%

(Martin, Midland)

Industry Composition



Wages by Industry (in millions)



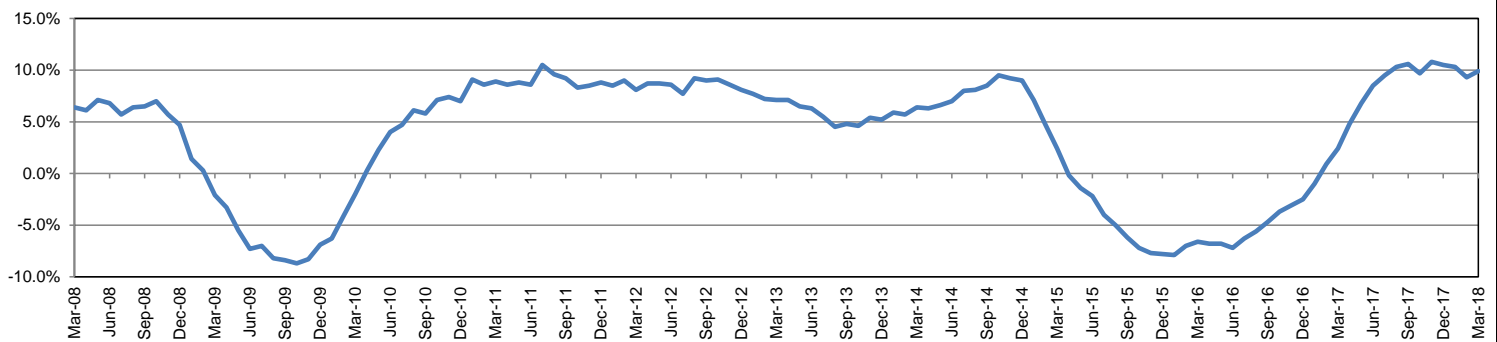
Employment by Industry

	Mar-18	Feb-18	Mar-17	Monthly Change		Annual Change	
				Actual	%	Actual	%
Total Nonfarm	98,700	97,600	89,800	1,100	1.1%	8,900	9.9%
Mining, Logging and Construction	31,600	30,500	25,600	1,100	3.6%	6,000	23.4%
Manufacturing	3,300	3,300	3,000	0	0.0%	300	10.0%
Trade, Transportation, and Utilities	19,000	19,100	17,800	-100	-0.5%	1,200	6.7%
Information	900	900	900	0	0.0%	0	0.0%
Financial Activities	3,900	3,900	3,700	0	0.0%	200	5.4%
Professional and Business Services	9,300	9,300	9,100	0	0.0%	200	2.2%
Education and Health Services	7,600	7,600	7,500	0	0.0%	100	1.3%
Leisure and Hospitality	9,700	9,600	8,900	100	1.0%	800	9.0%
Other Services	3,400	3,400	3,300	0	0.0%	100	3.0%
Government	10,000	10,000	10,000	0	0.0%	0	0.0%

Industry Size Class

Size Class	Employees per firm	Number of Firms	September 2017	
			Employment in Size Class	% Total Employment
9	1000+	5	8,126	8.7%
8	500-999	14	9,766	10.4%
7	250-499	23	7,614	8.1%
6	100-249	117	17,696	18.9%
5	50-99	216	15,170	16.2%
4	20-49	563	16,843	18.0%
3	10-19	588	8,084	8.6%
2	5-9	862	5,694	6.1%
1	1-4	2,189	4,475	4.8%
0	0	524	0	0.0%
Total		5,101	93,468	100.0%

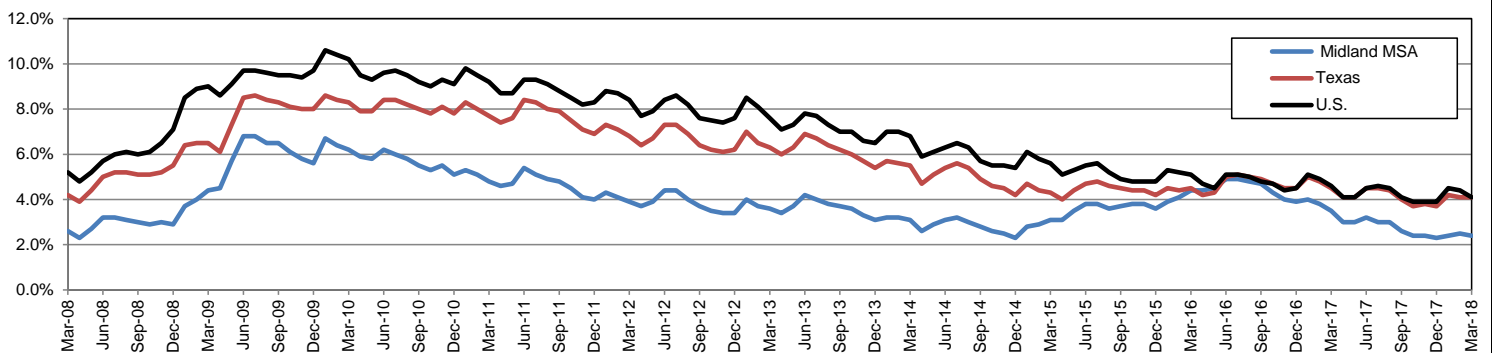
Annual Growth Rate for Total Nonagricultural Employment



Unemployment Information (all estimates in thousands)

	Midland MSA				Texas (Actual)				United States (Actual)			
	C.L.F.	Emp.	Unemp.	Rate	C.L.F.	Emp.	Unemp.	Rate	C.L.F.	Emp.	Unemp.	Rate
Mar-18	97.3	94.9	2.4	2.4	13,834.8	13,265.3	569.4	4.1	161,548.0	154,877.0	6,671.0	4.1
Feb-18	96.3	93.9	2.4	2.5	13,810.9	13,240.9	570.0	4.1	161,494.0	154,403.0	7,091.0	4.4
Mar-17	89.3	86.2	3.1	3.5	13,517.7	12,904.4	613.3	4.5	159,912.0	152,628.0	7,284.0	4.6

Historical Unemployment Rates



## MIDLAND CES

Area	Series Title	Mar-18	Feb-18	Mar-17	Monthly Change	Monthly %	Yearly Change	Yearly %
Midland	Total Nonfarm	98,700	97,600	89,800	1,100	1.1%	8,900	9.9%
Midland	.Total Private	88,700	87,600	79,800	1,100	1.3%	8,900	11.2%
Midland	.Goods Producing	34,900	33,800	28,600	1,100	3.3%	6,300	22.0%
Midland	..Mining, Logging and Construction	31,600	30,500	25,600	1,100	3.6%	6,000	23.4%
Midland	..Manufacturing	3,300	3,300	3,000	0	0.0%	300	10.0%
Midland	.Service-Providing	63,800	63,800	61,200	0	0.0%	2,600	4.2%
Midland	.Private Service Providing	53,800	53,800	51,200	0	0.0%	2,600	5.1%
Midland	..Trade, Transportation, and Utilities	19,000	19,100	17,800	-100	-0.5%	1,200	6.7%
Midland	...Wholesale Trade	6,000	6,000	5,200	0	0.0%	800	15.4%
Midland	...Retail Trade	9,100	9,200	8,800	-100	-1.1%	300	3.4%
Midland	...Transportation, Warehousing, and Utilities	3,900	3,900	3,800	0	0.0%	100	2.6%
Midland	..Information	900	900	900	0	0.0%	0	0.0%
Midland	..Financial Activities	3,900	3,900	3,700	0	0.0%	200	5.4%
Midland	..Professional and Business Services	9,300	9,300	9,100	0	0.0%	200	2.2%
Midland	..Education and Health Services	7,600	7,600	7,500	0	0.0%	100	1.3%
Midland	..Leisure and Hospitality	9,700	9,600	8,900	100	1.0%	800	9.0%
Midland	..Other Services	3,400	3,400	3,300	0	0.0%	100	3.0%
Midland	..Government	10,000	10,000	10,000	0	0.0%	0	0.0%
Midland	...Federal Government	500	600	600	-100	-16.7%	-100	-16.7%
Midland	...State Government	600	600	600	0	0.0%	0	0.0%
Midland	...Local Government	8,900	8,800	8,800	100	1.1%	100	1.1%