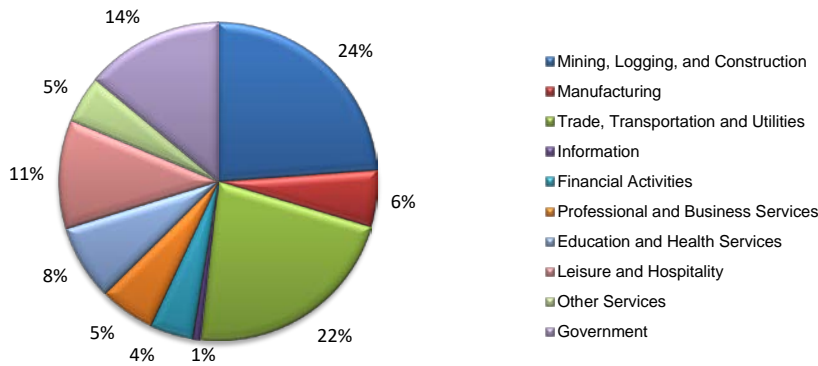
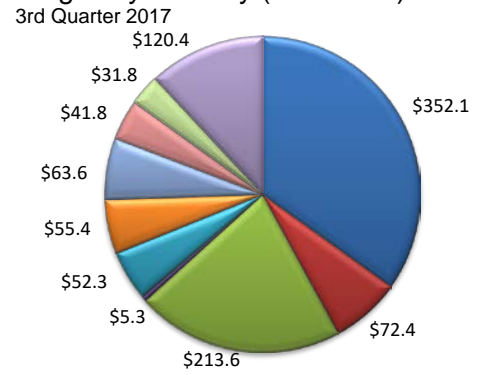


(Ector)

Industry Composition



Wages by Industry (in millions)



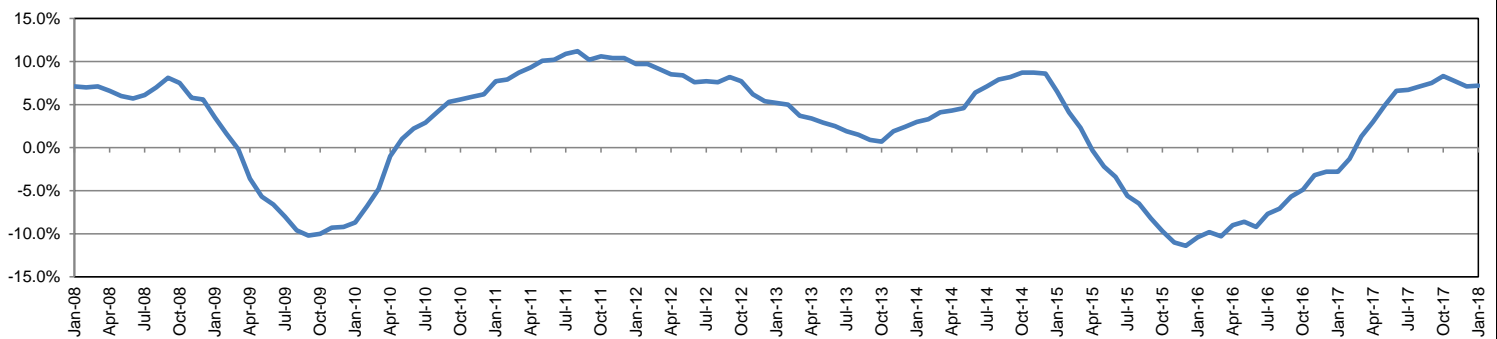
Employment by Industry

| | Jan-18 | Dec-17 | Jan-17 | Monthly Change | | Annual Change | |
|--------------------------------------|--------|--------|--------|----------------|--------|---------------|-------|
| | | | | Actual | % | Actual | % |
| | | | | | | | |
| Total Nonfarm | 74,600 | 75,600 | 69,600 | -1,000 | -1.3% | 5,000 | 7.2% |
| Mining, Logging and Construction | 17,800 | 17,900 | 15,000 | -100 | -0.6% | 2,800 | 18.7% |
| Manufacturing | 4,300 | 4,300 | 4,100 | 0 | 0.0% | 200 | 4.9% |
| Trade, Transportation, and Utilities | 16,500 | 16,800 | 15,700 | -300 | -1.8% | 800 | 5.1% |
| Information | 600 | 700 | 600 | -100 | -14.3% | 0 | 0.0% |
| Financial Activities | 3,300 | 3,300 | 3,200 | 0 | 0.0% | 100 | 3.1% |
| Professional and Business Services | 4,200 | 4,200 | 3,700 | 0 | 0.0% | 500 | 13.5% |
| Education and Health Services | 5,700 | 5,700 | 5,500 | 0 | 0.0% | 200 | 3.6% |
| Leisure and Hospitality | 8,200 | 8,400 | 7,700 | -200 | -2.4% | 500 | 6.5% |
| Other Services | 3,600 | 3,600 | 3,400 | 0 | 0.0% | 200 | 5.9% |
| Government | 10,400 | 10,700 | 10,700 | -300 | -2.8% | -300 | -2.8% |

Industry Size Class

| Size Class | Employees per firm | Number of Firms | September 2017 | |
|------------|--------------------|-----------------|--------------------------|--------------------|
| | | | Employment in Size Class | % Total Employment |
| 9 | 1000+ | 6 | 12,133 | 16.6% |
| 8 | 500-999 | 6 | 4,554 | 6.2% |
| 7 | 250-499 | 18 | 6,248 | 8.6% |
| 6 | 100-249 | 83 | 12,250 | 16.8% |
| 5 | 50-99 | 148 | 10,205 | 14.0% |
| 4 | 20-49 | 444 | 13,390 | 18.4% |
| 3 | 10-19 | 524 | 7,155 | 9.8% |
| 2 | 5-9 | 632 | 4,263 | 5.8% |
| 1 | 1-4 | 1,207 | 2,696 | 3.7% |
| 0 | 0 | 345 | 0 | 0.0% |
| Total | | 3,413 | 72,894 | 100.0% |

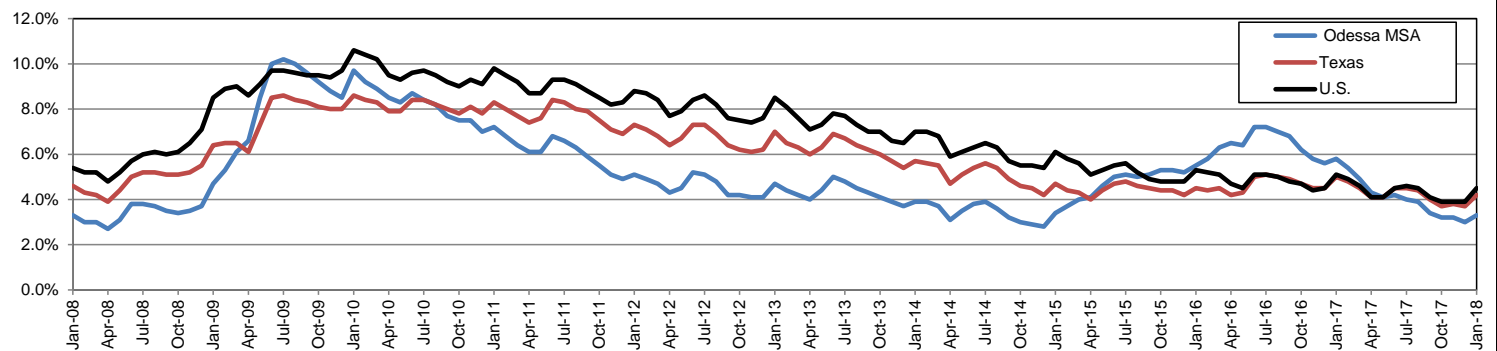
Annual Growth Rate for Total Nonagricultural Employment



Unemployment Information (all estimates in thousands)

| | Odessa MSA | | | | Texas (Actual) | | | | United States (Actual) | | | |
|--------|------------|------|--------|------|----------------|----------|--------|------|------------------------|-----------|---------|------|
| | C.L.F. | Emp. | Unemp. | Rate | C.L.F. | Emp. | Unemp. | Rate | C.L.F. | Emp. | Unemp. | Rate |
| Jan-18 | 79.7 | 77.1 | 2.6 | 3.3 | 13,622.1 | 13,054.1 | 568.0 | 4.2 | 160,037.0 | 152,848.0 | 7,189.0 | 4.5 |
| Dec-17 | 79.4 | 77.0 | 2.4 | 3.0 | 13,598.1 | 13,096.2 | 501.8 | 3.7 | 159,880.0 | 153,602.0 | 6,278.0 | 3.9 |
| Jan-17 | 76.0 | 71.6 | 4.4 | 5.8 | 13,417.3 | 12,749.0 | 668.4 | 5.0 | 158,676.0 | 150,527.0 | 8,149.0 | 5.1 |

Historical Unemployment Rates

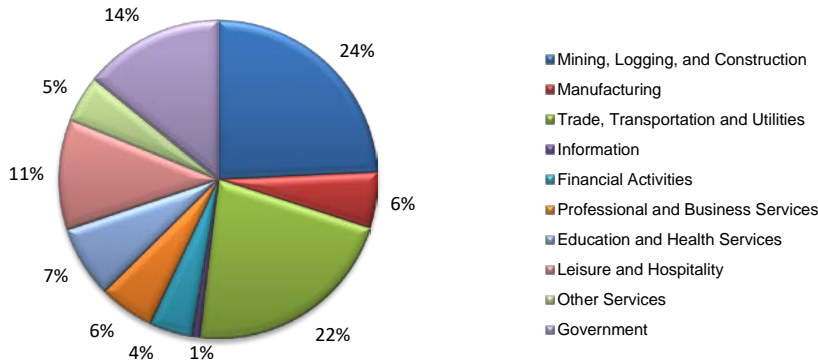


ODESSA CES

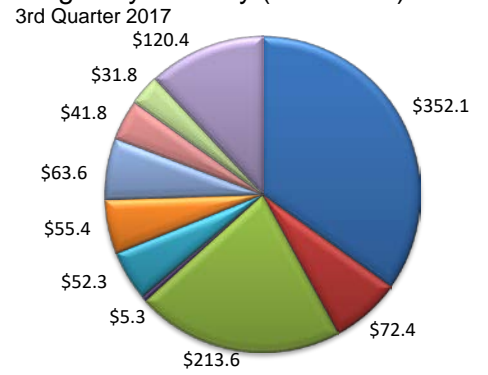
| Area Title | NAICS Industry | Jan-18 | Dec-17 | Jan-17 | Monthly Change | Monthly % | Yearly Change | Yearly % |
|------------|---|--------|--------|--------|----------------|-----------|---------------|----------|
| Odessa | Total Nonfarm | 74,600 | 75,600 | 69,600 | -1,000 | -1.3% | 5,000 | 7.2% |
| Odessa | Total Private | 64,200 | 64,900 | 58,900 | -700 | -1.1% | 5,300 | 9.0% |
| Odessa | Goods Producing | 22,100 | 22,200 | 19,100 | -100 | -0.5% | 3,000 | 15.7% |
| Odessa | .Mining, Logging, and Construction | 17,800 | 17,900 | 15,000 | -100 | -0.6% | 2,800 | 18.7% |
| Odessa | .Manufacturing | 4,300 | 4,300 | 4,100 | 0 | 0.0% | 200 | 4.9% |
| Odessa | Service Providing | 52,500 | 53,400 | 50,500 | -900 | -1.7% | 2,000 | 4.0% |
| Odessa | .Private Service Providing | 42,100 | 42,700 | 39,800 | -600 | -1.4% | 2,300 | 5.8% |
| Odessa | ..Trade, Transportation, and Utilities | 16,500 | 16,800 | 15,700 | -300 | -1.8% | 800 | 5.1% |
| Odessa | ...Wholesale Trade | 5,500 | 5,500 | 5,100 | 0 | 0.0% | 400 | 7.8% |
| Odessa | ...Retail Trade | 7,900 | 8,100 | 7,800 | -200 | -2.5% | 100 | 1.3% |
| Odessa | ...Transportation, Warehousing, and Utilities | 3,100 | 3,200 | 2,800 | -100 | -3.1% | 300 | 10.7% |
| Odessa | ..Information | 600 | 700 | 600 | -100 | -14.3% | 0 | 0.0% |
| Odessa | ..Financial Activities | 3,300 | 3,300 | 3,200 | 0 | 0.0% | 100 | 3.1% |
| Odessa | ..Professional and Business Services | 4,200 | 4,200 | 3,700 | 0 | 0.0% | 500 | 13.5% |
| Odessa | ..Educational and Health Services | 5,700 | 5,700 | 5,500 | 0 | 0.0% | 200 | 3.6% |
| Odessa | ..Leisure and Hospitality | 8,200 | 8,400 | 7,700 | -200 | -2.4% | 500 | 6.5% |
| Odessa | ..Other Services | 3,600 | 3,600 | 3,400 | 0 | 0.0% | 200 | 5.9% |
| Odessa | Government | 10,400 | 10,700 | 10,700 | -300 | -2.8% | -300 | -2.8% |
| Odessa | .Federal Government | 200 | 200 | 200 | 0 | 0.0% | 0 | 0.0% |
| Odessa | .State Government | 1,700 | 1,700 | 1,700 | 0 | 0.0% | 0 | 0.0% |
| Odessa | .Local Government | 8,500 | 8,800 | 8,800 | -300 | -3.4% | -300 | -3.4% |

(Ector)

Industry Composition



Wages by Industry (in millions)



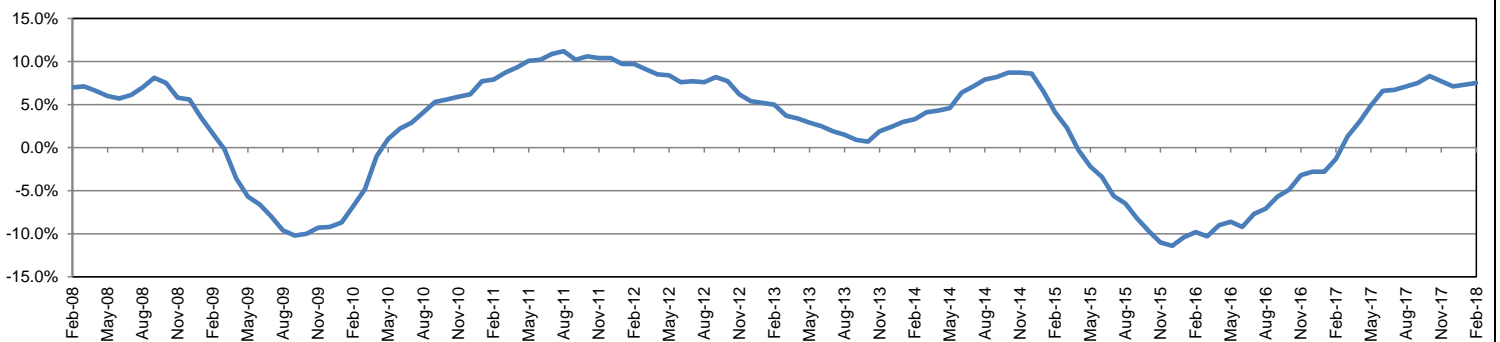
Employment by Industry

| | | | | Monthly Change | | Annual Change | |
|--------------------------------------|--------|--------|--------|----------------|-------|---------------|-------|
| | Feb-18 | Jan-18 | Feb-17 | Actual | % | Actual | % |
| | | | | | | | |
| Total Nonfarm | 75,800 | 74,700 | 70,500 | 1,100 | 1.5% | 5,300 | 7.5% |
| Mining, Logging and Construction | 18,400 | 18,000 | 15,400 | 400 | 2.2% | 3,000 | 19.5% |
| Manufacturing | 4,300 | 4,300 | 4,100 | 0 | 0.0% | 200 | 4.9% |
| Trade, Transportation, and Utilities | 16,600 | 16,500 | 15,700 | 100 | 0.6% | 900 | 5.7% |
| Information | 600 | 600 | 600 | 0 | 0.0% | 0 | 0.0% |
| Financial Activities | 3,300 | 3,300 | 3,200 | 0 | 0.0% | 100 | 3.1% |
| Professional and Business Services | 4,300 | 4,200 | 3,800 | 100 | 2.4% | 500 | 13.2% |
| Education and Health Services | 5,500 | 5,600 | 5,600 | -100 | -1.8% | -100 | -1.8% |
| Leisure and Hospitality | 8,500 | 8,200 | 7,800 | 300 | 3.7% | 700 | 9.0% |
| Other Services | 3,600 | 3,600 | 3,400 | 0 | 0.0% | 200 | 5.9% |
| Government | 10,700 | 10,400 | 10,900 | 300 | 2.9% | -200 | -1.8% |

Industry Size Class

| Size Class | Employees per firm | Number of Firms | September 2017 | |
|------------|--------------------|-----------------|--------------------------|--------------------|
| | | | Employment in Size Class | % Total Employment |
| 9 | 1000+ | 6 | 12,133 | 16.6% |
| 8 | 500-999 | 6 | 4,554 | 6.2% |
| 7 | 250-499 | 18 | 6,248 | 8.6% |
| 6 | 100-249 | 83 | 12,250 | 16.8% |
| 5 | 50-99 | 148 | 10,205 | 14.0% |
| 4 | 20-49 | 444 | 13,390 | 18.4% |
| 3 | 10-19 | 524 | 7,155 | 9.8% |
| 2 | 5-9 | 632 | 4,263 | 5.8% |
| 1 | 1-4 | 1,207 | 2,696 | 3.7% |
| 0 | 0 | 345 | 0 | 0.0% |
| Total | | 3,413 | 72,894 | 100.0% |

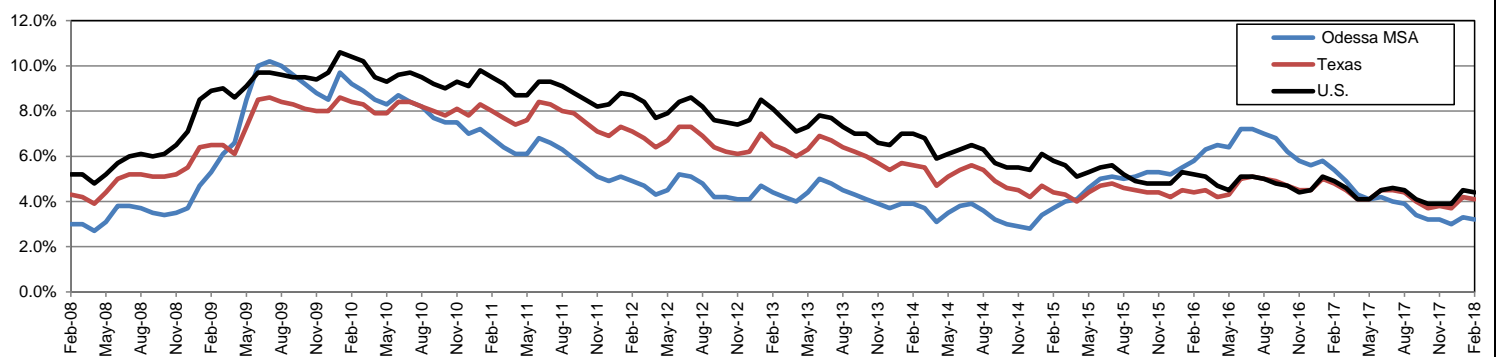
Annual Growth Rate for Total Nonagricultural Employment



Unemployment Information (all estimates in thousands)

| | Odessa MSA | | | | Texas (Actual) | | | | United States (Actual) | | | |
|--------|------------|------|--------|------|----------------|----------|--------|------|------------------------|-----------|---------|------|
| | C.L.F. | Emp. | Unemp. | Rate | C.L.F. | Emp. | Unemp. | Rate | C.L.F. | Emp. | Unemp. | Rate |
| Feb-18 | 81.0 | 78.4 | 2.6 | 3.2 | 13,811.9 | 13,241.9 | 570.0 | 4.1 | 161,494.0 | 154,403.0 | 7,091.0 | 4.4 |
| Jan-18 | 79.8 | 77.2 | 2.6 | 3.3 | 13,621.8 | 13,053.8 | 568.0 | 4.2 | 160,037.0 | 152,848.0 | 7,189.0 | 4.5 |
| Feb-17 | 76.5 | 72.4 | 4.1 | 5.4 | 13,494.0 | 12,840.8 | 653.1 | 4.8 | 159,482.0 | 151,594.0 | 7,887.0 | 4.9 |

Historical Unemployment Rates

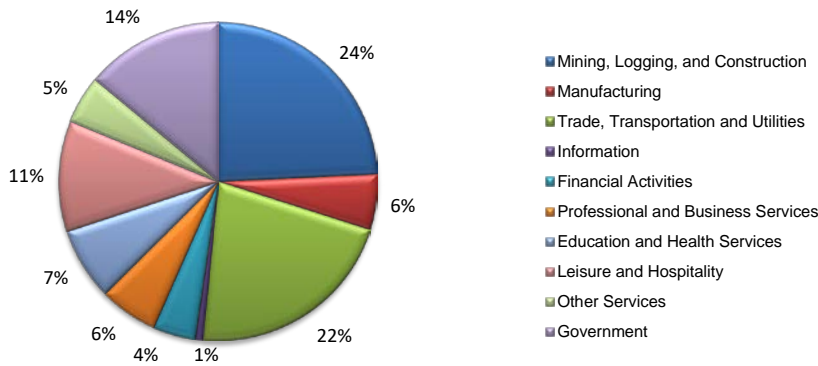


ODESSA CES

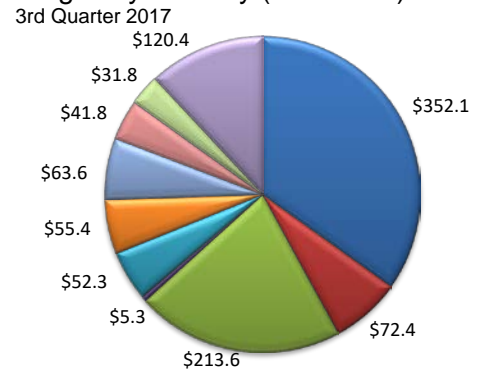
| Area Title | NAICS Industry | Feb-18 | Jan-18 | Feb-17 | Monthly Change | Monthly % | Yearly Change | Yearly % |
|------------|---|--------|--------|--------|----------------|-----------|---------------|----------|
| Odessa | Total Nonfarm | 75,800 | 74,700 | 70,500 | 1,100 | 1.5% | 5,300 | 7.5% |
| Odessa | Total Private | 65,100 | 64,300 | 59,600 | 800 | 1.2% | 5,500 | 9.2% |
| Odessa | Goods Producing | 22,700 | 22,300 | 19,500 | 400 | 1.8% | 3,200 | 16.4% |
| Odessa | .Mining, Logging, and Construction | 18,400 | 18,000 | 15,400 | 400 | 2.2% | 3,000 | 19.5% |
| Odessa | .Manufacturing | 4,300 | 4,300 | 4,100 | 0 | 0.0% | 200 | 4.9% |
| Odessa | Service Providing | 53,100 | 52,400 | 51,000 | 700 | 1.3% | 2,100 | 4.1% |
| Odessa | .Private Service Providing | 42,400 | 42,000 | 40,100 | 400 | 1.0% | 2,300 | 5.7% |
| Odessa | ..Trade, Transportation, and Utilities | 16,600 | 16,500 | 15,700 | 100 | 0.6% | 900 | 5.7% |
| Odessa | ...Wholesale Trade | 5,600 | 5,500 | 5,200 | 100 | 1.8% | 400 | 7.7% |
| Odessa | ...Retail Trade | 7,800 | 7,900 | 7,700 | -100 | -1.3% | 100 | 1.3% |
| Odessa | ...Transportation, Warehousing, and Utilities | 3,200 | 3,100 | 2,800 | 100 | 3.2% | 400 | 14.3% |
| Odessa | ..Information | 600 | 600 | 600 | 0 | 0.0% | 0 | 0.0% |
| Odessa | ..Financial Activities | 3,300 | 3,300 | 3,200 | 0 | 0.0% | 100 | 3.1% |
| Odessa | ..Professional and Business Services | 4,300 | 4,200 | 3,800 | 100 | 2.4% | 500 | 13.2% |
| Odessa | ..Educational and Health Services | 5,500 | 5,600 | 5,600 | -100 | -1.8% | -100 | -1.8% |
| Odessa | ..Leisure and Hospitality | 8,500 | 8,200 | 7,800 | 300 | 3.7% | 700 | 9.0% |
| Odessa | ..Other Services | 3,600 | 3,600 | 3,400 | 0 | 0.0% | 200 | 5.9% |
| Odessa | Government | 10,700 | 10,400 | 10,900 | 300 | 2.9% | -200 | -1.8% |
| Odessa | .Federal Government | 200 | 200 | 200 | 0 | 0.0% | 0 | 0.0% |
| Odessa | .State Government | 1,800 | 1,700 | 1,800 | 100 | 5.9% | 0 | 0.0% |
| Odessa | .Local Government | 8,700 | 8,500 | 8,900 | 200 | 2.4% | -200 | -2.2% |

(Ector)

Industry Composition



Wages by Industry (in millions)



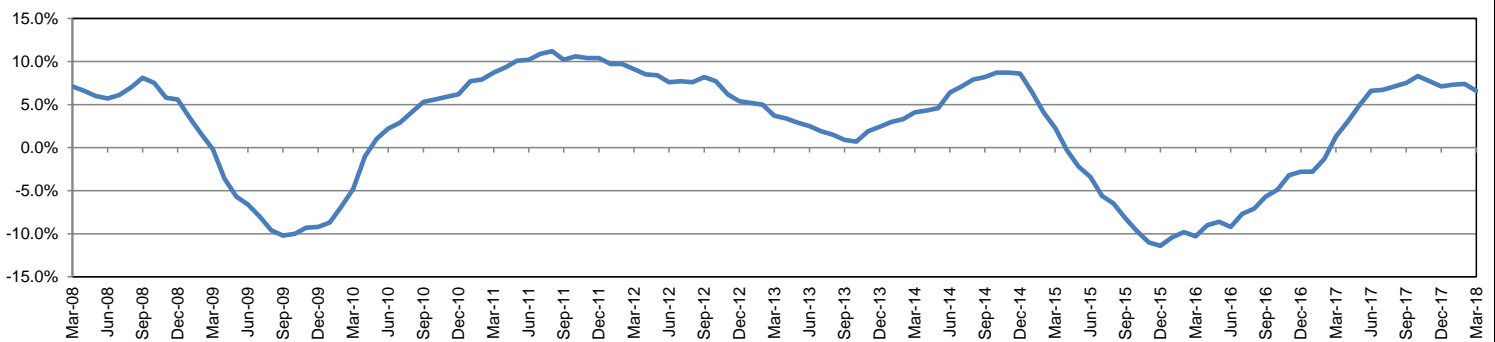
Employment by Industry

| | Mar-18 | Feb-18 | Mar-17 | Monthly Change | | Annual Change | |
|--------------------------------------|--------|--------|--------|----------------|-------|---------------|-------|
| | | | | Actual | % | Actual | % |
| | | | | | | | |
| Total Nonfarm | 75,900 | 75,700 | 71,200 | 200 | 0.3% | 4,700 | 6.6% |
| Mining, Logging and Construction | 18,400 | 18,400 | 15,700 | 0 | 0.0% | 2,700 | 17.2% |
| Manufacturing | 4,300 | 4,300 | 4,200 | 0 | 0.0% | 100 | 2.4% |
| Trade, Transportation, and Utilities | 16,400 | 16,400 | 15,700 | 0 | 0.0% | 700 | 4.5% |
| Information | 600 | 600 | 600 | 0 | 0.0% | 0 | 0.0% |
| Financial Activities | 3,300 | 3,300 | 3,200 | 0 | 0.0% | 100 | 3.1% |
| Professional and Business Services | 4,500 | 4,300 | 3,800 | 200 | 4.7% | 700 | 18.4% |
| Education and Health Services | 5,600 | 5,600 | 5,600 | 0 | 0.0% | 0 | 0.0% |
| Leisure and Hospitality | 8,500 | 8,500 | 8,000 | 0 | 0.0% | 500 | 6.3% |
| Other Services | 3,700 | 3,600 | 3,500 | 100 | 2.8% | 200 | 5.7% |
| Government | 10,600 | 10,700 | 10,900 | -100 | -0.9% | -300 | -2.8% |

Industry Size Class

| Size Class | Employees per firm | Number of Firms | September 2017 | |
|------------|--------------------|-----------------|--------------------------|--------------------|
| | | | Employment in Size Class | % Total Employment |
| 9 | 1000+ | 6 | 12,133 | 16.6% |
| 8 | 500-999 | 6 | 4,554 | 6.2% |
| 7 | 250-499 | 18 | 6,248 | 8.6% |
| 6 | 100-249 | 83 | 12,250 | 16.8% |
| 5 | 50-99 | 148 | 10,205 | 14.0% |
| 4 | 20-49 | 444 | 13,390 | 18.4% |
| 3 | 10-19 | 524 | 7,155 | 9.8% |
| 2 | 5-9 | 632 | 4,263 | 5.8% |
| 1 | 1-4 | 1,207 | 2,696 | 3.7% |
| 0 | 0 | 345 | 0 | 0.0% |
| Total | | 3,413 | 72,894 | 100.0% |

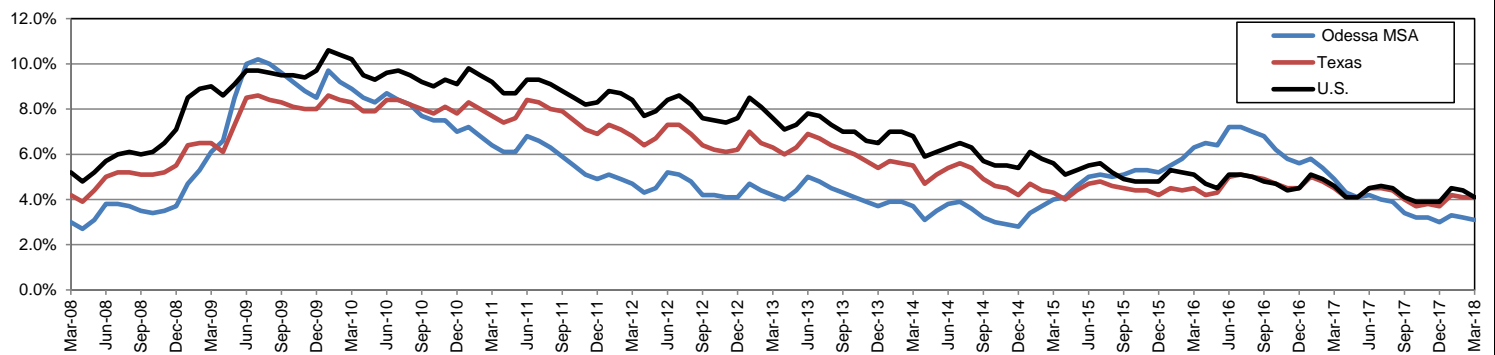
Annual Growth Rate for Total Nonagricultural Employment



Unemployment Information (all estimates in thousands)

| | Odessa MSA | | | | Texas (Actual) | | | | United States (Actual) | | | |
|--------|------------|------|--------|------|----------------|----------|--------|------|------------------------|-----------|---------|------|
| | C.L.F. | Emp. | Unemp. | Rate | C.L.F. | Emp. | Unemp. | Rate | C.L.F. | Emp. | Unemp. | Rate |
| Mar-18 | 81.0 | 78.4 | 2.5 | 3.1 | 13,834.8 | 13,265.3 | 569.4 | 4.1 | 161,548.0 | 154,877.0 | 6,671.0 | 4.1 |
| Feb-18 | 80.8 | 78.3 | 2.6 | 3.2 | 13,810.9 | 13,240.9 | 570.0 | 4.1 | 161,494.0 | 154,403.0 | 7,091.0 | 4.4 |
| Mar-17 | 76.6 | 72.8 | 3.8 | 4.9 | 13,517.7 | 12,904.4 | 613.3 | 4.5 | 159,912.0 | 152,628.0 | 7,284.0 | 4.6 |

Historical Unemployment Rates



ODESSA CES

| Area Title | NAICS Industry | Mar-18 | Feb-18 | Mar-17 | Monthly Change | Monthly % | Yearly Change | Yearly % |
|------------|---|--------|--------|--------|----------------|-----------|---------------|----------|
| Odessa | Total Nonfarm | 75,900 | 75,700 | 71,200 | 200 | 0.3% | 4,700 | 6.6% |
| Odessa | Total Private | 65,300 | 65,000 | 60,300 | 300 | 0.5% | 5,000 | 8.3% |
| Odessa | Goods Producing | 22,700 | 22,700 | 19,900 | 0 | 0.0% | 2,800 | 14.1% |
| Odessa | .Mining, Logging, and Construction | 18,400 | 18,400 | 15,700 | 0 | 0.0% | 2,700 | 17.2% |
| Odessa | .Manufacturing | 4,300 | 4,300 | 4,200 | 0 | 0.0% | 100 | 2.4% |
| Odessa | Service Providing | 53,200 | 53,000 | 51,300 | 200 | 0.4% | 1,900 | 3.7% |
| Odessa | .Private Service Providing | 42,600 | 42,300 | 40,400 | 300 | 0.7% | 2,200 | 5.4% |
| Odessa | ..Trade, Transportation, and Utilities | 16,400 | 16,400 | 15,700 | 0 | 0.0% | 700 | 4.5% |
| Odessa | ...Wholesale Trade | 5,500 | 5,500 | 5,200 | 0 | 0.0% | 300 | 5.8% |
| Odessa | ...Retail Trade | 7,800 | 7,800 | 7,700 | 0 | 0.0% | 100 | 1.3% |
| Odessa | ...Transportation, Warehousing, and Utilities | 3,100 | 3,100 | 2,800 | 0 | 0.0% | 300 | 10.7% |
| Odessa | ..Information | 600 | 600 | 600 | 0 | 0.0% | 0 | 0.0% |
| Odessa | ..Financial Activities | 3,300 | 3,300 | 3,200 | 0 | 0.0% | 100 | 3.1% |
| Odessa | ..Professional and Business Services | 4,500 | 4,300 | 3,800 | 200 | 4.7% | 700 | 18.4% |
| Odessa | ..Educational and Health Services | 5,600 | 5,600 | 5,600 | 0 | 0.0% | 0 | 0.0% |
| Odessa | ..Leisure and Hospitality | 8,500 | 8,500 | 8,000 | 0 | 0.0% | 500 | 6.3% |
| Odessa | ..Other Services | 3,700 | 3,600 | 3,500 | 100 | 2.8% | 200 | 5.7% |
| Odessa | Government | 10,600 | 10,700 | 10,900 | -100 | -0.9% | -300 | -2.8% |
| Odessa | .Federal Government | 200 | 200 | 200 | 0 | 0.0% | 0 | 0.0% |
| Odessa | .State Government | 1,800 | 1,800 | 1,800 | 0 | 0.0% | 0 | 0.0% |
| Odessa | .Local Government | 8,600 | 8,700 | 8,900 | -100 | -1.1% | -300 | -3.4% |