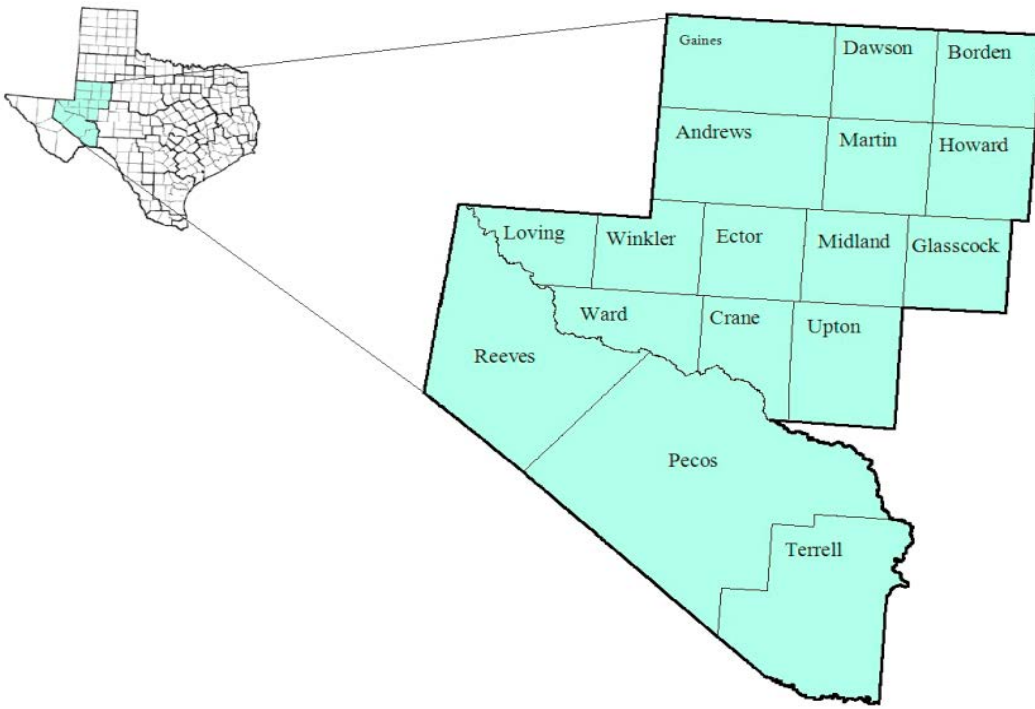


Permian Basin Workforce Development Area

January 2018



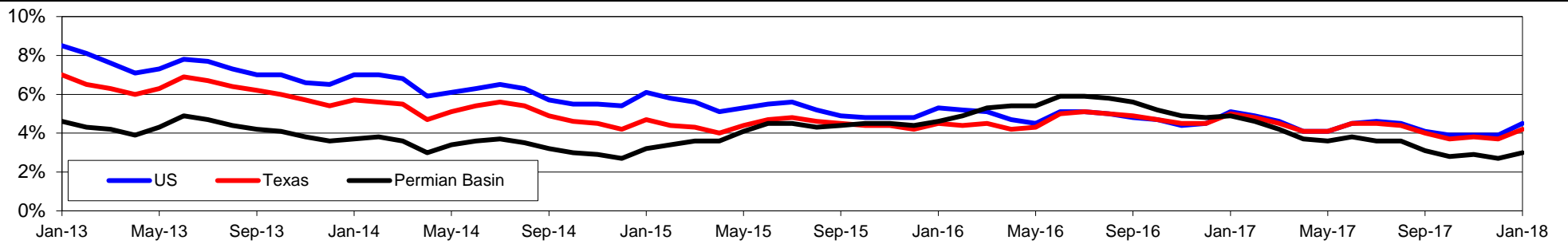
WDA Labor Force Statistics				
	Jan-18	Dec-17	Jan-17	OTY
CLF	239,346	237,642	225,574	13,772
Employed	232,253	231,161	214,456	17,797
Unemployed	7,093	6,481	11,118	-4,025
Rate	3.0%	2.7%	4.9%	-1.9%

Texas Labor Force Statistics				
	Jan-18	Dec-17	Jan-17	OTY
CLF	13,622,067	13,598,061	13,417,349	204,718
Employed	13,054,089	13,096,216	12,748,985	305,104
Unemployed	567,978	501,845	668,364	-100,386
Rate	4.2%	3.7%	5.0%	-0.8%

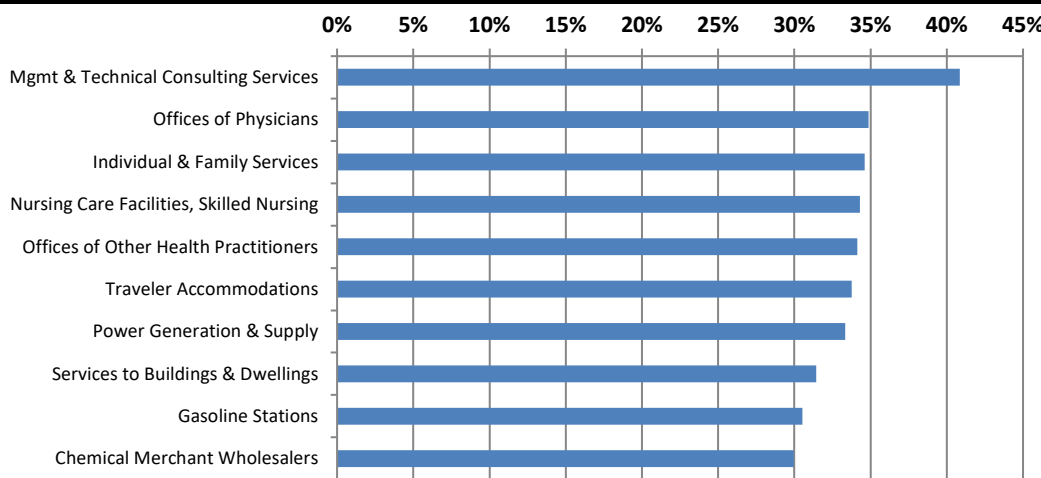
US Labor Force Statistics				
	Jan-18	Dec-17	Jan-17	OTY
CLF	160,037,000	159,880,000	158,676,000	1,361,000
Employed	152,848,000	153,602,000	150,527,000	2,321,000
Unemployed	7,189,000	6,278,000	8,149,000	-960,000
Rate	4.5%	3.9%	5.1%	-0.6%

Continued Claims for the Week of the 12th				
	Jan-18	Dec-17	Jan-17	OTY
WDA	781	813	1,667	-886
Texas	111,828	108,432	132,086	-20,258

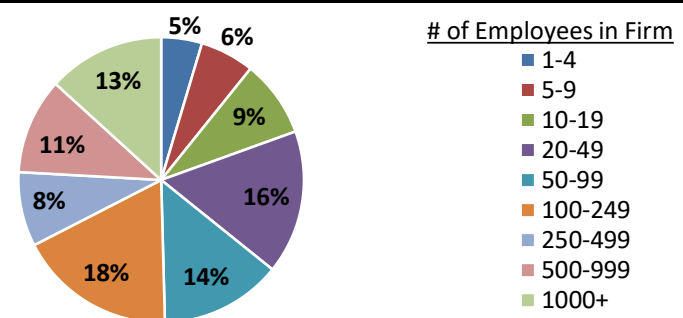
Historical Unemployment Rates



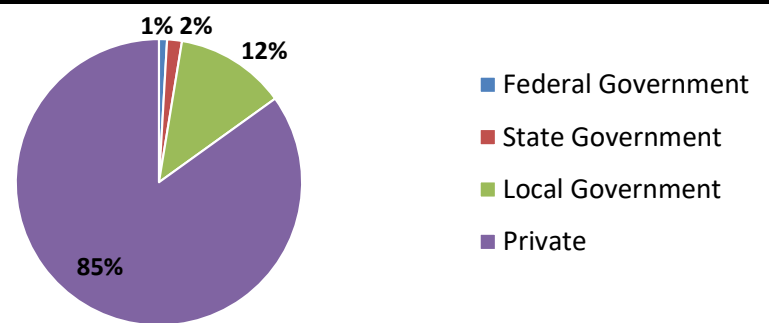
Projected Fastest Growing Industries in WDA (% growth 2014-2024)



Employment by Size Class (3rd Quarter 2017)



Employment by Ownership (3rd Quarter 2017)



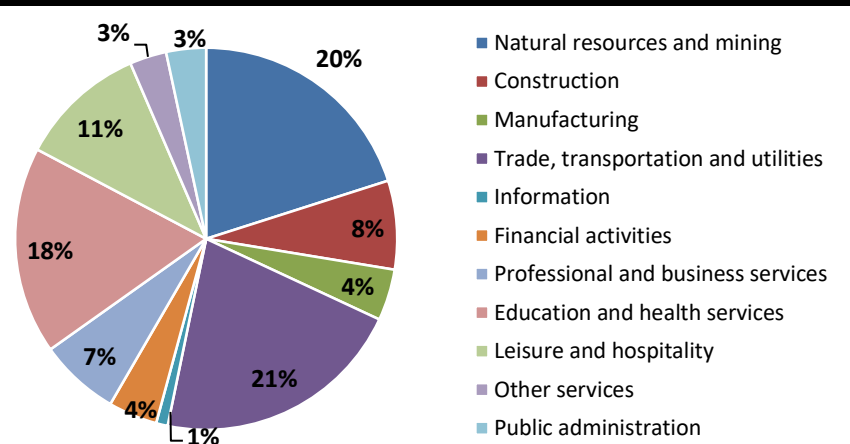
Average Weekly Wage (3rd Quarter 2017)

	Q3 2017	Q2 2017	Q3 2016	Change	
				Quarter	Year
WDA	\$1,135	\$1,138	\$1,056	-\$3	\$79
Texas	\$1,032	\$1,027	\$1,042	\$5	-\$10
US	\$1,021	\$1,020	\$1,027	\$1	-\$6

Employment by Industry (3rd Quarter 2017, Percent Change)

Industry	Employment	% of total	% Change	
			Quarter	Year
Natural resources and mining	43,692	20.1%	7.1%	21.1%
Construction	16,345	7.5%	7.1%	12.6%
Manufacturing	9,457	4.3%	2.6%	9.1%
Trade, transportation and utilities	46,341	21.3%	2.7%	5.1%
Information	2,138	1.0%	0.9%	14.9%
Financial activities	9,025	4.1%	1.5%	5.2%
Professional and business services	14,811	6.8%	1.3%	9.3%
Education and health services	38,221	17.6%	-2.8%	0.1%
Leisure and hospitality	23,445	10.8%	3.6%	7.4%
Other services	6,776	3.1%	2.4%	8.8%
Public administration	7,335	3.4%	-1.1%	-2.7%
Total	217,586	100.0%	2.6%	8.2%

Employment by Industry (3rd Quarter 2017)

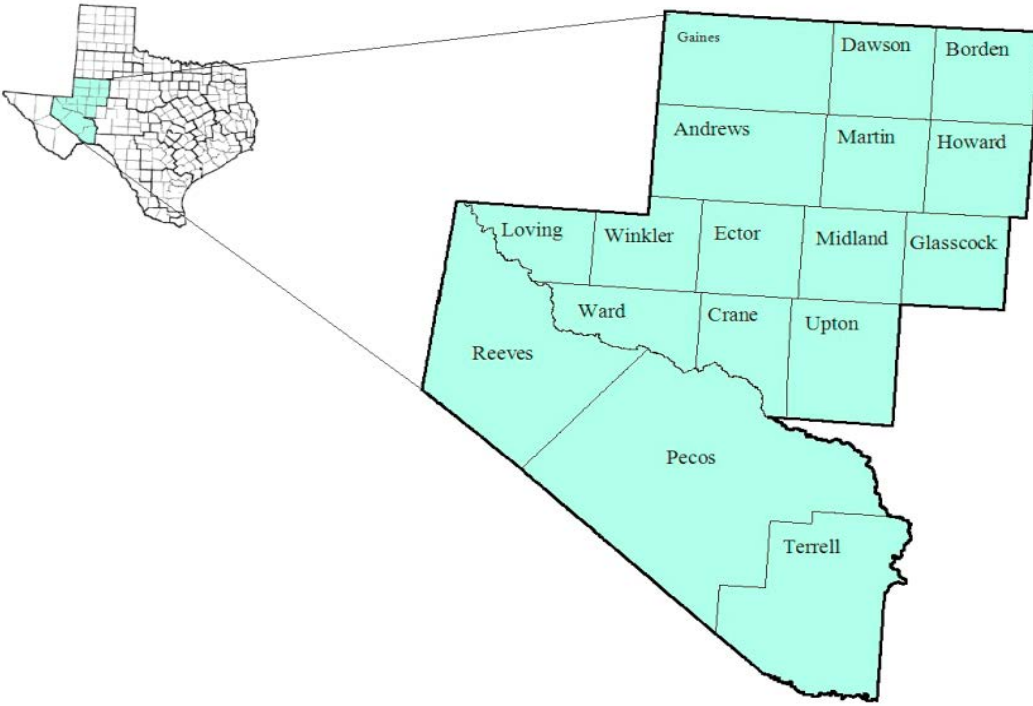


PERMIAN BASIN

PERMIAN BASIN													
	January-18				December-17				January-17				
Area	Area Type	Labor Force	Employment	Unemployment	Rate	Labor Force	Employment	Unemployment	Rate	Labor Force	Employment	Unemployment	Rate
Texas	State	13,622,067	13,054,089	567,978	4.2	13,598,061	13,096,216	501,845	3.7	13,417,349	12,748,985	668,364	5.0
Midland	MSA	95,614	93,285	2,329	2.4	94,704	92,563	2,141	2.3	88,369	84,793	3,576	4.0
Odessa	MSA	79,706	77,087	2,619	3.3	79,431	77,028	2,403	3.0	75,964	71,586	4,378	5.8
Permian Basin	WDA	239,346	232,253	7,093	3.0	237,642	231,161	6,481	2.7	225,574	214,456	11,118	4.9
Andrews	County	9,157	8,913	244	2.7	9,052	8,839	213	2.4	8,744	8,372	372	4.3
Borden	County	302	289	13	4.3	305	293	12	3.9	317	305	12	3.8
Crane	County	1,552	1,478	74	4.8	1,534	1,468	66	4.3	1,608	1,493	115	7.2
Dawson	County	4,532	4,332	200	4.4	4,595	4,410	185	4.0	4,663	4,416	247	5.3
Ector	County	79,706	77,087	2,619	3.3	79,431	77,028	2,403	3.0	75,964	71,586	4,378	5.8
Gaines	County	9,247	9,003	244	2.6	9,257	9,031	226	2.4	9,017	8,672	345	3.8
Glasscock	County	677	660	17	2.5	664	649	15	2.3	651	629	22	3.4
Howard	County	13,297	12,810	487	3.7	13,079	12,646	433	3.3	13,200	12,474	726	5.5
Loving	County	96	92	4	4.2	93	89	4	4.3	114	108	6	5.3
Martin	County	2,614	2,551	63	2.4	2,612	2,552	60	2.3	2,453	2,345	108	4.4
Midland	County	93,000	90,734	2,266	2.4	92,092	90,011	2,081	2.3	85,916	82,448	3,468	4.0
Pecos	County	6,703	6,461	242	3.6	6,729	6,521	208	3.1	6,269	5,869	400	6.4
Reeves	County	7,743	7,525	218	2.8	7,479	7,277	202	2.7	6,233	5,936	297	4.8
Terrell	County	344	331	13	3.8	380	367	13	3.4	376	349	27	7.2
Upton	County	1,517	1,459	58	3.8	1,518	1,469	49	3.2	1,529	1,454	75	4.9
Ward	County	5,510	5,307	203	3.7	5,519	5,332	187	3.4	5,416	5,128	288	5.3
Winkler	County	3,349	3,221	128	3.8	3,303	3,179	124	3.8	3,104	2,872	232	7.5
Big Spring	City	9,700	9,307	393	4.1	9,531	9,188	343	3.6	9,665	9,063	602	6.2
Midland	City	76,890	75,028	1,862	2.4	76,140	74,430	1,710	2.2	71,018	68,176	2,842	4.0
Odessa	City	61,489	59,567	1,922	3.1	61,254	59,514	1,740	2.8	58,382	55,294	3,088	5.3

Permian Basin Workforce Development Area

February 2018



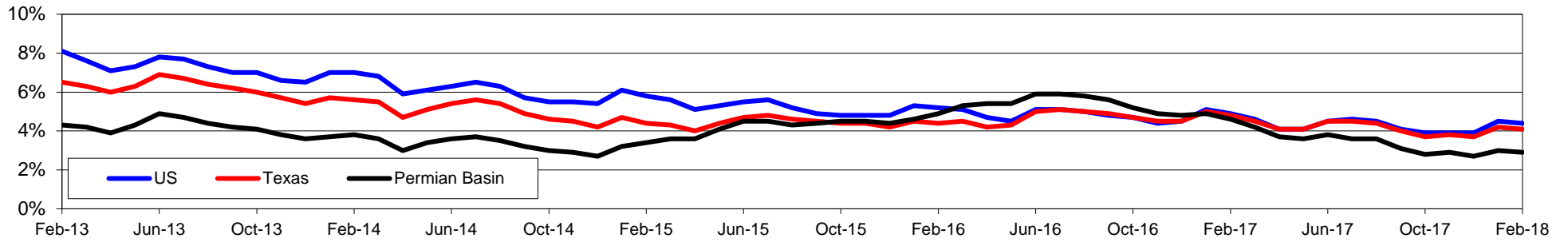
WDA Labor Force Statistics				
	Feb-18	Jan-18	Feb-17	OTY
CLF	242,105	239,261	227,459	14,646
Employed	234,974	232,170	216,890	18,084
Unemployed	7,131	7,091	10,569	-3,438
Rate	2.9%	3.0%	4.6%	-1.7%

Texas Labor Force Statistics				
	Feb-18	Jan-18	Feb-17	OTY
CLF	13,811,924	13,621,781	13,493,966	317,958
Employed	13,241,913	13,053,790	12,840,842	401,071
Unemployed	570,011	567,991	653,124	-83,113
Rate	4.1%	4.2%	4.8%	-0.7%

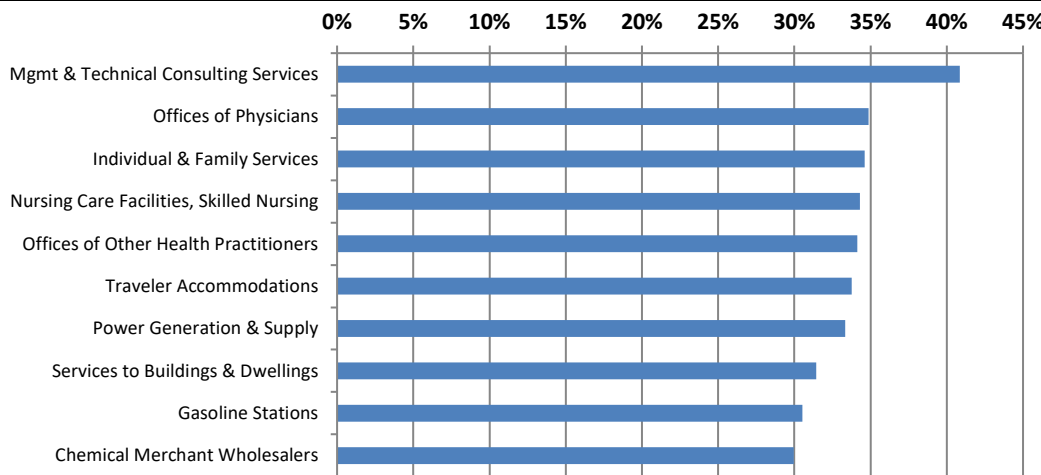
US Labor Force Statistics				
	Feb-18	Jan-18	Feb-17	OTY
CLF	161,494,000	160,037,000	159,482,000	2,012,000
Employed	154,403,000	152,848,000	151,594,000	2,809,000
Unemployed	7,091,000	7,189,000	7,887,000	-796,000
Rate	4.4%	4.5%	4.9%	-0.5%

Continued Claims for the Week of the 12th				
	Feb-18	Jan-18	Feb-17	OTY
WDA	703	782	1,429	-726
Texas	103,388	112,088	124,093	-20,705

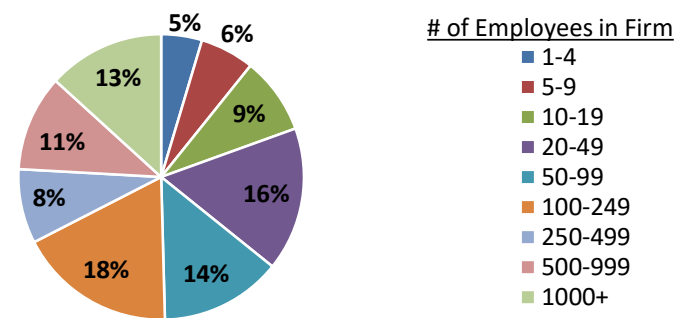
Historical Unemployment Rates



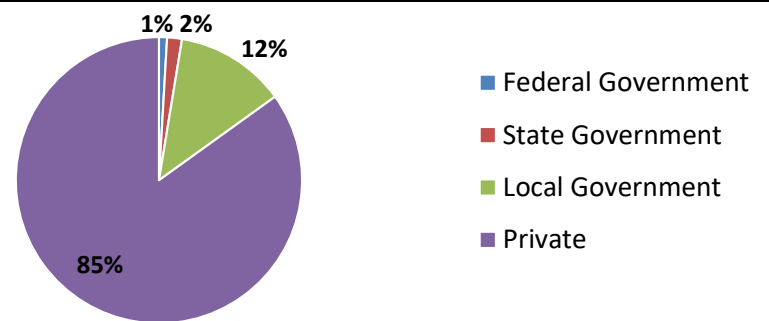
Projected Fastest Growing Industries in WDA (% growth 2014-2024)



Employment by Size Class (3rd Quarter 2017)



Employment by Ownership (3rd Quarter 2017)



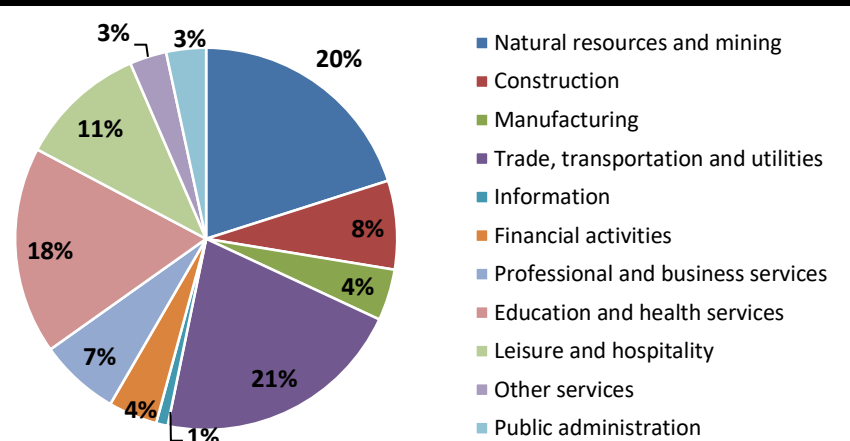
Average Weekly Wage (3rd Quarter 2017)

	Q3 2017	Q2 2017	Q3 2016	Change	
				Quarter	Year
WDA	\$1,135	\$1,138	\$1,056	-\$3	\$79
Texas	\$1,032	\$1,027	\$1,042	\$5	-\$10
US	\$1,021	\$1,020	\$1,027	\$1	-\$6

Employment by Industry (3rd Quarter 2017, Percent Change)

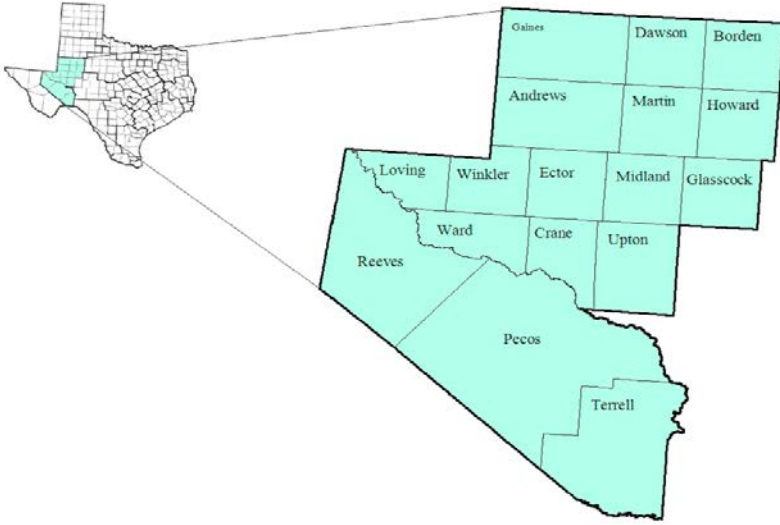
Industry	Employment	% of total	% Change	
			Quarter	Year
Natural resources and mining	43,692	20.1%	7.1%	21.1%
Construction	16,345	7.5%	7.1%	12.6%
Manufacturing	9,457	4.3%	2.6%	9.1%
Trade, transportation and utilities	46,341	21.3%	2.7%	5.1%
Information	2,138	1.0%	0.9%	14.9%
Financial activities	9,025	4.1%	1.5%	5.2%
Professional and business services	14,811	6.8%	1.3%	9.3%
Education and health services	38,221	17.6%	-2.8%	0.1%
Leisure and hospitality	23,445	10.8%	3.6%	7.4%
Other services	6,776	3.1%	2.4%	8.8%
Public administration	7,335	3.4%	-1.1%	-2.7%
Total	217,586	100.0%	2.6%	8.2%

Employment by Industry (3rd Quarter 2017)



Permian Basin Workforce Development Area

March 2018



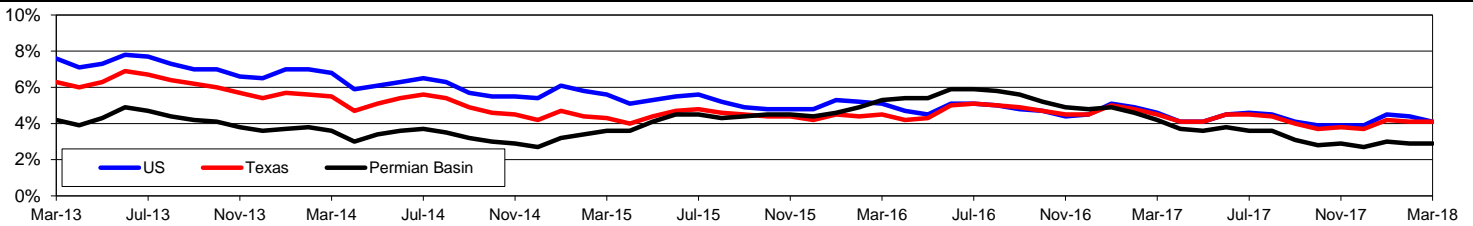
WDA Labor Force Statistics				
	Mar-18	Feb-18	Mar-17	OTY
CLF	243,402	241,852	228,506	14,896
Employed	236,245	234,729	218,850	17,395
Unemployed	7,157	7,123	9,656	-2,499
Rate	2.9%	2.9%	4.2%	-1.3%

Texas Labor Force Statistics				
	Mar-18	Feb-18	Mar-17	OTY
CLF	13,834,783	13,810,899	13,517,746	317,037
Employed	13,265,346	13,240,944	12,904,419	360,927
Unemployed	569,437	569,955	613,327	-43,890
Rate	4.1%	4.1%	4.5%	-0.4%

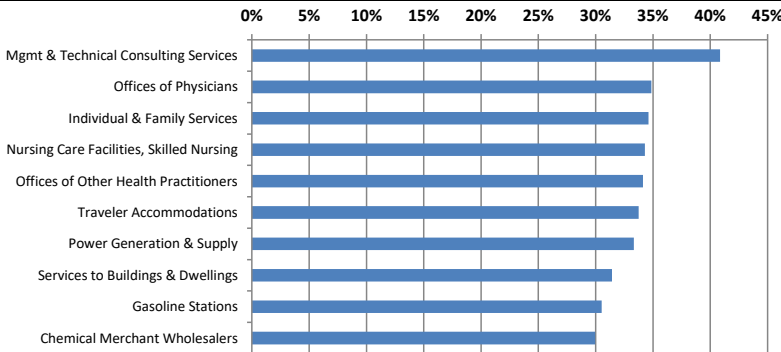
US Labor Force Statistics				
	Mar-18	Feb-18	Mar-17	OTY
CLF	161,548,000	161,494,000	159,912,000	1,636,000
Employed	154,877,000	154,403,000	152,628,000	2,249,000
Unemployed	6,671,000	7,091,000	7,284,000	-613,000
Rate	4.1%	4.4%	4.6%	-0.5%

Continued Claims for the Week of the 12th				
	Mar-18	Feb-18	Mar-17	OTY
WDA	703	712	1,314	-611
Texas	101,803	104,413	122,322	-20,519

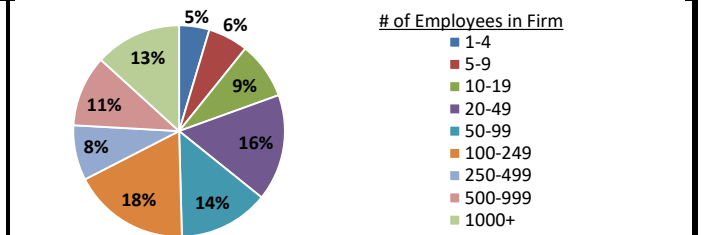
Historical Unemployment Rates



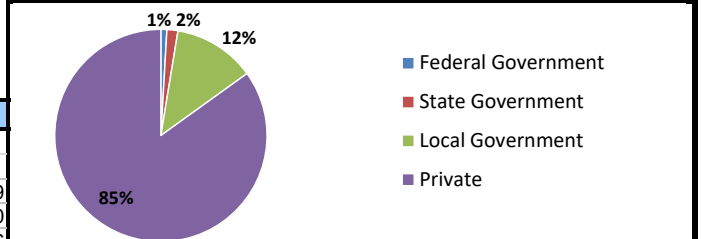
Projected Fastest Growing Industries in WDA (% growth 2014-2024)



Employment by Size Class (3rd Quarter 2017)



Employment by Ownership (3rd Quarter 2017)



Average Weekly Wage (3rd Quarter 2017)

	Q3 2017	Q2 2017	Q3 2016	Change	
				Quarter	Year
WDA	\$1,135	\$1,138	\$1,056	-\$3	\$79
Texas	\$1,032	\$1,027	\$1,042	\$5	-\$10
US	\$1,021	\$1,020	\$1,027	\$1	-\$6

Employment by Industry (3rd Quarter 2017, Percent Change)

Industry	Employment	% of total	% Change	
			Quarter	Year
Natural resources and mining	43,692	20.1%	7.1%	21.1%
Construction	16,345	7.5%	7.1%	12.6%
Manufacturing	9,457	4.3%	2.6%	9.1%
Trade, transportation and utilities	46,341	21.3%	2.7%	5.1%
Information	2,138	1.0%	0.9%	14.9%
Financial activities	9,025	4.1%	1.5%	5.2%
Professional and business services	14,811	6.8%	1.3%	9.3%
Education and health services	38,221	17.6%	-2.8%	0.1%
Leisure and hospitality	23,445	10.8%	3.6%	7.4%
Other services	6,776	3.1%	2.4%	8.8%
Public administration	7,335	3.4%	-1.1%	-2.7%
Total	217,586	100.0%	2.6%	8.2%

Employment by Industry (3rd Quarter 2017)

